

Post Office Opening Times
Mon, Tues, Thurs, Fri: 9am - 1pm and
2pm - 5.30pm
Weds: 9am - 1pm
Sat: 9am - 12.30pm

Library Opening Times (BVCL)
Tues, Thurs: 2 - 5pm (Tues Story time
2.15pm – 2.45pm Term time only -
free and no need to book, just drop
in.)
Fri: 2pm - 7pm
Sat: 10am - 1pm

Mobile Library (1st Tuesday each
month)
Yardley Ave Health Centre:
2.40pm - 3.15pm

Your PPP would not reach your door without the sterling efforts of the volunteer editor, band of distributors and their organiser, Klaus Ginda. Each distributor posts between 16 and 70 magazines four times a year. Many thanks to them all: Sheila Stevens, Annie Stack, Fiona Thompson, Barbara Jacob, Norah Parkins, Tracy Stone, Linda Thompson, Sue Nicholls, Vanita Patel, Isobel Robinson, Gillian Arney, Sarah Smith, Louise Pope, Alison Sturgess, Mike Clayton, Nikki Matthey, Norma Leighton, Kathryn Cooper, Linda Martin, Olive West, Vanessa Swan, Sally Kapadia, Julie Mead, Jacqui Gardiner, Terry Gardiner, Lynn Fountain, Louise Weatherill, Dawn Eaglesham, Linda Willmont, Kathy Brassington, Alison Hawkins If you would like to help with the distribution then please contact Klaus Ginda on 01296 668911 or Klausginda@btinternet.com

Editor—Cllr Ben Blunt - Tel: 01296 660702 or pppeditor@pitstone.co.uk
Advertising Manager—Cllr Klaus Ginda—
Tel: 01296 668911 or Klausginda@btinternet.com
PPP Advertising Rates (including VAT at 20%)
Business card £9, Quarter Page £14, Third page £17, Half Page £24.50, Full page £48.50, Inside colour half £30, Inside colour full £60, Back page colour £65. For advertising enquiries please contact the Advertising Manager or Editor above.

Deadline for articles for the Winter edition is 17th January 2014.
Please send contributions to pppeditor@pitstone.co.uk

MISSION STATEMENT
The content of PPP is intended to inform and enhance the lives of the people of Pitstone.



FROM THE CHAIRMAN, PITSTONE PARISH COUNCIL



It seems months ago now, but this is the first edition since 'Party in the Park' which undoubtedly was a resounding success. Congratulations to all those who worked so hard on the day. The money raised for various Charities and the Memorial Hall Community Lounge will make a difference. Thanks to you all for your support. Congratulations also to the Management Committee which the Parish Council was pleased to be able to support. That was the start of a long hot glorious summer; the first for many years and I am sure that we have all enjoyed it.

The Parish Council has thought it necessary to invest in the upkeep of the car park on Pitstone Hill. This maintenance is long overdue and has improved the facility greatly for hikers, dog walkers and motorists alike. It is also, unfortunately, a site for unnecessary and selfish fly tipping which the Parish Council and the team from National Trust Ashridge work hard to keep abreast of. Please see page 7 for details on how to report any fly tippers.

By the time this edition gets to you we will have put the clocks back one hour, and it just remains for me to remind you all to be vigilant of the long cold winter nights and possible power failures. Have a torch, batteries and candles ready, just in case. Keep safe and warm and keep an eye on elderly neighbours.

Bob Saintey.

COUNCIL NEWS



DISTRICT AND

COUNTY COUNCIL NEWS

By Avril Davies, District and County Councillor, Ivinghoe Division

Nineteen years ago SAVE (Support Aylesbury Vale's Environment) was launched by Jonathan Porritt and George Monbiot at a big conference in Aylesbury Civic Centre for anyone and everyone interested in supporting their local environment.

I had the idea for SAVE after the 1991 Rio world environment conference urged 'think global act local', and as chairman of the environment committee council, I was then in a position to innovate and champion the environment. With the dedicated support of a handful of like minded Aylesbury Vale officers this little vehicle for environmental activists, thinkers and visionaries in the local community has become an 'environmental innovation hub'.

Five 'round table' working groups and 2 conferences delivered SAVE week for 6 years including the Green Fair and the Recycled Clothes Show, involving thousands of people. It has supported education projects, community events including theatre and film and Zap Carbon, SAVE Solar, and Superhomes projects enabling residents to improve their

homes, install renewable energy systems and reduce bills. SAVE has awarded £40K in grants and presented hundreds of SAVE awards to recognise local initiatives that have resulted in lasting environmental gain. It re-established the Tour de Vale cycle ride in 2005, now a major fundraiser for the British Wheelchair Sports Association. It set up Furniture Aid, the Aylesbury re-use and recycling centre, and DuckLETS, a cash free trading system. The SAVE code is 10 things you personally can do to contribute to a better Aylesbury Vale, including SAVE on waste, save driving, and save wildlife.



On Oct 3rd I attended a symposium SAVE 20-20 – developing a vision for the next 20 years. There were three speakers at the event. David Lidington MP, Foreign Office Minister for Europe, spoke without notes for 40 minutes on the global economic contributors to climate change, and how without climate security it will be impossible to guarantee future security of food, water and energy supplies. He wholeheartedly encouraged SAVE to press on for the next 20 years.

Martin Hodson, environmental scientist, plant biologist from Oxford Brookes University and Haddenham resident, explained in detail and with pictures the whole recent IPCC climate change report and its implications for us locally. Victoria Harvey, South Beds Friends of the Earth told us about some of her campaigns and successful projects, but more importantly the significance of bees to the farmer, supermarket, kitchen table and overall biodiversity, and what anyone can do to help the survival of bees.

Enthusiastic questions and discussion meant the event over ran its schedule, and SAVE is still no nearer deciding its future, but with a success record such as it has, we cannot afford to let it go.

Creating a Nature Reserve - the story of College Lake

BBOWT College Lake hosted a book launch and signing on 21st September for this amazing book by Graham Atkins, and at the same event re-dedicated the refurbished Castle hide to George Goddard the cement works manager without whom Graham's vision would never have materialised. By making some of my Community Leaders Fund available to BBOWT for the advance purchase of the book, the book could be published, the story told, and is available at the College Lake Centre.

Connected Counties update - high speed broadband: www.connectedcounties.org

The Connected counties newsletter shows that the Ivinghoe/Pitstone/Cheddington areas already have the highest speed broadband service, although it doesn't feel like that as contention problems at peak usage times are daily occurrences.

On digging deeper in to BT websites dslchecker.bt.com it looks as if by December 31st, all the Cheddington exchange Cabinets will have fibre broadband installed, but to different speeds. Eg cabinet 2 downstream UP TO 25.5 Mbps, and cabinet 8 UP TO 57mbps. Upstream speeds much slower of course.

MAHONEY

PLUMBING & HEATING

Annual Gas Boiler Servicing
All central heating repairs & maintenance

Corgi Registered (No 20135) & Institute of Plumbers

Phone/Fax: 01296 662863 Mobile: 07836 266368

Email: russell.mahoney@btconnect.com
www.mahoneyheating.com

64-66 Akeman Street, Tring, Herts HP23 6AF

comput@mation

it support & aftersales services

Computer Support for Home & Business Users

Problem Solving:

Virus, spyware detection & removal
Internet & email assistance
Fault diagnostics, repairs & upgrades
Slow running PCs

Services:

Computer support for PCs, Mac & Linux
Wireless & wired networking
Data recovery
Install & setup
Health checks

Sales:

Desktops, laptops, printers, peripherals & software

For friendly help and advice call:

John Wallace on 07968 536068 or 01525 261381

email: john@computamation.co.uk - skype: computamation

Computamation Services Ltd - 9a Lower Way, Great Brickhill, Bucks. MK17 9AG.

Established 1999 with 25 years experience

Three areas where Transport for Bucks 'could do better' - highway maintenance, speed reduction measures, and grass cutting.

Getting on for twelve months ago I identified with highways engineers where the priority road maintenance should be done. This is in addition to ongoing pothole repairs. Some maps show the work to have been completed at the Travellers Rest Roundabout and the B488 from Grove to Rowden Farm, but we couldn't find it! The other schemes are the rest of the B488 to Great Gap, and Ivinghoe Aston to Slapton (which will continue to be patched and planed with the bad corner to be prioritised).

Following on the speed watch teams activities last year the Local Area Forum (LAF) considered it worthwhile to fund additional measures in Mentmore, Great Gap and Ivinghoe, and Edlesborough. These 'are in the pipeline' as they say. The LAF is going to fund the preliminary work needed on the A4146 between the Travellers Rest and the Pebblemoor turning for a 50mph limit as a result of continuous pressure since this was turned down at the last review. LAF funded Vehicle Activated Signs shared by several parishes have been put in place, although if you are travelling within the speed limit they are hard to spot!

Grass cutting. Can't say much, it could be libellous. Endless requests along long lines of command produced nothing but more long grass this year, with walking routes badly affected.

After the May election Cllr Ruth Vigor Hedderley was handed this responsibility at the County Council. She told members of the Environment Select Committee in September that any Parish Council wishing to take

over this service, with the existing by-the-metre funding transferred, should contact her. If your council thinks this is a good idea, please contact me or her directly.

Avril Davies

County and District Councillor

<http://avrildavies.mycouncillor.org>

@avrilpitstone

PARISH COUNCIL NEWS

Threat of Closure: Youth Café

For the last two years we have been running a Youth Café from Brookmead School on a Wednesday evening 6.30pm-8pm. It has been a great hit with 11-16 year olds (Years 7-11) from the village, and we have over 200 local children registered to the Youth Café, with 50-70 attending every week.

The Parish Council pays for trained youth workers to run the Café every week, supported by a small team of dedicated volunteers. We are desperately in need of more **volunteers. Without them, we can't continue** to run the Youth Café and it may close.

If your child attends, or will be eligible to attend next school year, or you would just like to help out with something so important for the Young people, please get in touch to volunteer so that your child can continue to enjoy this valued amenity.

It doesn't take much time out – just a few evenings a term, or whatever time you are able to offer. Please do come along and have a chat before you volunteer if you like, **there's a great atmosphere and you will be most welcome.** Every Wednesday during term time from 6.30-8pm. Further information from the Parish Clerk.

♪ singalong ↗

with Helen

from November 8th
there will be a

NEW CLASS

with
Singing Helen
at 10.00am in
Pitstone

(in the MAIN HALL)
call to reserve your place

♪ singalong ↗

with Helen

40 minutes of musical fun with
instruments and puppets
(Term time only)

- Monday - 10.30 @ Pitstone
- Tuesday - 10.00 @ Cheddington
- Wednesday - 13.30 @ Pitstone
- Thursday - 10.00 @ Pitstone
- Friday - 10.00 @ Pitstone

Call me on 01296 661791 to reserve a
place or ask about Singalong parties
0-5 year olds £3.75
siblings 2+ only £2
siblings under 2 - free
free tea, coffee, juice and biscuits

Pitstone Memorial Hall

Hire Availability Notice

Weekday and regular bookings now available

Pitstone Memorial Hall, in Vicarage Road, by the Recreation Ground, offers excellent facilities for events, parties, business functions, wedding receptions, classes, etc.

- The Main Hall, with large stage, seats 120, and has kitchen and bookable bar facilities.
- The Millennium Room is a smaller hall seating 60, and has its own kitchen and toilets.
- The Meeting Room can accommodate 50 for a lecture, or 25 at tables, and has whiteboard and flipchart.
- There is well-lit parking on site, with space for 60 cars.

Hire fees vary depending on venue and time. Please contact the booking clerk for more information.

Booking Clerk; Mrs. S Gregory 01296 661609

GROOMS FARM SHOP



FRESH MEAT & POULTRY
EGGS, VEGETABLES & DAIRY
PRODUCTS
FREE DELIVERY

Open: Thurs 10am—1.45pm,
Fri 8am—5.30pm, Sat 8am—1pm

WILLOWDENE FARM
IVINGHOE
TEL: 01296 668326

Waste dumped in and around Ashridge Estate



2013 has seen several incidents of illegal waste dumping in and around the Ashridge National Trust Estate.



This has included large scale dumping of mixed wastes in woodland and farmland. Several loads of carpet underlay have been dumped in the Stocks Road car park between Ivinghoe and Aldbury.

The dumping has also included the leaving of significant quantities of litter near parking areas where visitors appear to have had barbeques.

This dumping blights the area and can harm wildlife and farm animals. Waste may also **contain invasive 'pest' species, such as Japanese Knot Weed or Spanish Blue Bells** which have very negative impact on local flora and fauna. These also damage the Biological Site of Special Scientific Interest that covers most of the Estate.

The vast majority of visitors to the estate appreciate and value the beautiful countryside they find there, but there is a significant number who clearly feel able to dump waste.

If you see someone abusing the area in this way, we do ask that you report what you have seen together with the offending vehicle registration on 0845 330 1856 or on line at www.buckscc.gov.uk/fly

Please be advised that action is, and will be taken against offenders.

Volunteer of Year Award

Nominations are now invited for next year's award. The only rule is that nominees are or have worked on a voluntary basis with an organisation within the village of Pitstone. The closing date for entries will be the 15th January 2014. The successful candidate will be chosen, from a list of nominees, by Pitstone Parish Council prior to the Parish Council's Annual Assembly for 2014, where an award of £50.00, will be presented to the person chosen. Nominations can be made by both adults and children living in the village, so please post or e-mail your nominations to our Parish Clerk, Laurie

Nails by Helen

Home based nail studio in Pitstone

Bio Sculpture Gel Nails O.P.I. Manicures & Pedicures

20% off your first treatment with this advert
(valid until 31st. December 2013)

07834 530160

www.nailsbyhelen.co.uk



Quality fresh vegetables.

Extensive freezer range.

Home produced beef and lamb.
Stockists of Heygates animal feeds.

Heygates flour.

Speciality foods.

TEA ROOM

We serve tea,
fresh coffee,

Cakes, toasted sandwiches,

Soup and filled rolls

The Moors, Wilstone, Tring

HP23 4NT

01442 828478

New May Fu

Tel: 01296 661969 01296 662180
01296 668136

Chinese Cuisine 新五福 17/19 Marsworth Road, Pitstone,
Restaurant Bedfordshire LU7 9AT

*Eat As Much As You Like
Sundays, Tuesdays @ Wednesdays*

All Food is Freshly Cooked to Order

Available Sunday: 12.00noon - 5.00pm

Tuesday & Wednesday: 5.00pm - 9.00pm

£15.80 per Adult - £7.40 per Child (under the age of 10)
£10.00 - Pensioners (OAP's) • Minimum for two people.

We Also offer:

Free Home Delivery on our Take Away Menu

On orders £15 and over within a 3 mile radius.

Cash payments only

For more information email newmayfu.limited@gmail.com



HAWTHORN
GARDENING

Roy Seabrook

H: 01296 625531

M: 07906 398187

Pruning & Weeding

Hedge & Tree Work

Lawn Care

Grass Cutting

Small Landscapes

Eagling. Please include your contact details and tell us why we should agree with your choice.

Advance Information for West Coast Mainline Customers - £81m Major Improvement Works Scheduled 2014

Network Rail will start essential improvement work in 2014 on the West Coast Main Line at Watford to improve the reliability of the line and train punctuality.

To enable the work to be completed with minimum overall disruption, no trains will run on the West Coast Main Line through Watford on the following dates:

- May Bank Holiday: Saturday 3 - Monday 5 May 2014
- August: Friday 8 - Bank Holiday Monday 25 August 2014
- Christmas: Thursday 25 - Monday 29 December 2014
- February: Saturday 14 – Sunday 22
- February Easter: Friday 3 – Monday 6 April 2015

This much-needed upgrade of the West Coast line has been scheduled to take place when fewer people are travelling and is the preferred option over the alternative which would have been 54 consecutive weeks of closure.

London Midland is working with Network Rail and other train companies to make alternative travel arrangements to minimise disruption during the closures next year.

As these plans are finalised, we will provide a comprehensive programme of communication with clear information well ahead of and during the closure so that customers can plan their journeys.

London Overground services between Watford Junction and London Euston will continue to run throughout the closures.

To find out more information on this programme of work on the West Coast Mainline, go to <http://www.networkrail.co.uk/improvements/west-coast-main-line/>

Winter Driving Workshops help residents to be prepared in Buckinghamshire

Transport for Buckinghamshire is well on the way to preparing for the winter weather and one of the services offered to residents is to gain the knowledge and skills to help them drive safely during the winter months.

Buckinghamshire can be prone to experiencing micro climates, which means an unexpected variation from the surrounding conditions and we can encounter these more during the winter. For example meeting icy conditions where tree coverage has not allowed the sun to melt the ground or pockets of mist and fog near water. By reading the clues provided by road signs and our environment we can become more hazard aware and prepare for these diversities.

To help motorists read the environment and adjust their driving accordingly, the Road Safety Team offer residents the opportunity to attend a Winter Driving Workshop. The workshops are offered in partnership with STS Tyre Pros garages at Aylesbury, Chesham and High Wycombe during November.

Workshops include a presentation by a former Class 1 police response driver on how to handle vehicles on ice and snow and ga-

rage technicians show motorists how to conduct basic checks on their vehicles to reduce the likelihood of them becoming one of the 18,000 winter breakdown statistics on Buckinghamshire roads.

The workshops take place on:

Tuesday 19th November 2013 at 511 London Road, High Wycombe HP11 1EP

Thursday 21st November 2013 at Amersham Road, Chesham HP15 1NG

Thursday 28th November 2013 at Park Street, Aylesbury HP20 1DX

The workshops start at 7pm and last for two hours and cost £10 a place which includes a car safety pack.

To book and pay please email ffb@buckscc.gov.uk or telephone 0845 2302882 or go online to <http://www.transportforbucks.net/Road-Safety/Winter-driving-workshops.aspx>

Library service

BCC has notified that the mobile library service will be moving from a fortnightly to a monthly service with effect from 1 November. Still on a Tuesday at the doctors surgery from 2.45-3.15pm.

WHAT A PARTY!

Hopefully everyone in the village came to the fantastic Party In The Park that was held on Saturday 13th July.

We were blessed with a scorching July day, and the recreation ground filled up with villagers looking to enjoy the weather and entertainment on offer.

The crowd was estimated at well over 2,000 people throughout the day, and a huge

£10,000 plus was raised for Rett UK, our chosen charity for the day, and for improvements and renovations to the Memorial Hall.

The beer festival with real ales from our local breweries and the BBQ (provided by **Groom's Farm**) proved a hit with all.

There was something for everyone, with craft stalls, Paella and Ice Cream, and lots of **children's activities and entertainment.**

The main draw was the magnificent music stage which hosted a continual procession of excellent musical variety throughout the day.

Superbly opened by Palmerston with their folk harmonies, we were then entertained by Dizzee with classic covers, The Sticky Keys Saxophone Quartet, Luke Papini, Marina and Alfie all performed brilliantly with their acoustic sets, Take The Seven rocked the early afternoon, followed by the Beacon Community Choir and blues rock closed the **outside stage with Crainer's Hill.**

Music continued in the evening inside the Memorial Hall with Anaphase, and outside in the beer garden with more music and sing-alongs with Harry and Alfie.

All of the musicians performed for free, and I thank them all for their generosity with their time. They were all great. It made for a really enjoyable and good natured day for everyone. I have had so many positive comments from everyone who was there.

I'd like to give thanks to everyone who helped pull the event together – too many to mention here – you know who you are. Without them, it could not have happened. Many months of preparation and long hours working behind the scenes and on the day. Thank you again.

We would love to do it again. No firm date is planned yet – but if you want to be involved as either a volunteer, a band, to pro-

Give your child an outstanding start

Windmill Pre-School in Ivinghoe is rated 'Outstanding' by Ofsted making us one of the top pre-schools nationally and highest rated locally

"Children make excellent progress in all areas of their learning and development because staff plan an outstanding range of activities..."

"Children have fun and are purposefully engaged in all areas of this dynamic setting. They make excellent progress as staff recognise them as unique individuals..."



Morning session: 9am-12pm
Lunch club: 12pm-1pm
Afternoon session: 1pm-3pm

Source: Ofsted report June 2011

From January 2014 we will be open 5 full days per week

We welcome all children between 2 and 5 years from Pitstone, Ivinghoe & surrounding areas to our purpose-built premises behind Brookmead School

IT'S NEVER TOO EARLY TO REGISTER YOUR CHILD

For further info and to arrange a visit for you and your child please contact us:
 admin@windmillpreschool.co.uk or 01296 661031 (during sessions)



Registered Charity No. 1032380 www.windmillpreschool.co.uk

Give Bowls a Go!

Open sessions for you

Every Tuesday at 2pm

Every Friday at 6pm

May to September

CHEDDINGTON BOWLS CLUB, your friendly local Club, is for everybody – all ages: beginners to experts.

Our Open sessions are an ideal opportunity to get to know bowls and refine your skills. Come with trainers or flat soled shoes. We will supply the rest.

Cheddington Bowls Club, The Recreation Ground, High Street,

Contacts: Nigel on 01442 824 679 or Sue on 01296 668 772



Sponsored by www.wisechoicewills.co.uk • 01525 220644

mote your local business with a stall, or to sponsor the event (it takes money to make it happen!) please feel free to drop me a line. If you want to book any of the bands from last year please get in touch too.

And let's hope the Sun comes out again in 2014 to smile on us!

Steve Matthey

stevematthey@gmail.com

EDUCATION



The children will by now be settled into their refurbished classrooms after the October half term and the new hall, library and learning spaces are on target for completion in February next year.

It's been amazing to see how well everyone has been getting on during the first phase of the building works; Mongolian learning experiences and a Roman battle reenactment in the new yurt, the headteacher's office turned into a photographers studio for the school photographs, violin lessons taken in the admin office, additional forest school learning, and break times on Ivinghoe lawn and play equipment.

There have been two open mornings for new parents to see for themselves what the early learning years experience is at Brookmead School. They also had a tour to see learning in the rest of the school.

Pupils are looking forward to taking part in Christmas events around the villages as well as their own performances in December; pupils in the upper school will also be taking part in the national singing event together with schools across the country to celebrate the end of **the composer Benjamin Britten's centenary year on the 22nd November.**

Brookmead pupils can be heard singing at:

St Mary's Christmas Fayre: Saturday 23rd November

Friends at Brookmead Christmas Fair: Saturday 30th November 10:00-13:00

The Old School Christmas Market: Friday 6th December

OAPs' Christmas Lunch, Pitstone Memorial Hall: Friday 13th December 12:30-13:30

WINDMILL PRE-SCHOOL



The new academic year has well and truly begun, and at Windmill Pre-School we have welcomed a number of new children in to the setting alongside the children already here from the previous terms.

In order to keep the children engaged and enthusiastic, we like to vary our daily routines and activities and have lots of exciting things planned for the children to take part in – some of which have already commenced with the children collecting apples and making their own delicious crumbles. We are continuing with our regular football sessions on Mondays and Fridays with Dan Pope. The children really enjoyed these sessions during the summer term so we are pleased to be able to keep them going. On Tuesdays, we have introduced Hartbeeps to Pre-School **which is a magical mixture of sound, song and imagination. So far we've had some great** feedback from the children with lots of enthusiasm and excitement.

This month we have worked with the church to collect food for the Harvest Festival and support families less fortunate. Children have been learning about what this means and how we can help other people.

At the end of this Half Term, we will be having a Halloween themed week with crafts, foods and activities which will conclude with the children having a costume competition. We might even see the staff and committee getting dressed up, so watch this space for pictures!!

Events

During this academic year, we have a number of events planned to help raise funds for the Pre-School. Many of these events will be open to the wider community, so we hope you will come and show your support:

November: Quiz night at Ivinghoe Town Hall

December: Christmas concert

February: Textile recycling

May: Quiz night and annual sponsored walk around the village

June: Church fete with float competition and Silent Auction

July: Textile recycling

Opening Hours

Due to the increasing demand for places at Windmill Pre-School, we are pleased to announce that from January 2014, we will be opening on Friday afternoons. This means that we will be open five days per week. And because of the popularity of the setting, we **strongly recommend that you put your child's name on the waiting list long before you**



Girlguiding

Buckinghamshire

- Rainbows: Monday 4.30 - 5.30 p.m.
Pitstone Memorial Hall
Guider Elaine Thorogood
01296 661540
- Brownies: Monday 5.45 - 7.15 p.m.
Pitstone Memorial Hall
Guider Elaine Thorogood
01296 661540
- Guides: Tuesday 7.00 - 8.30 p.m.
Millennium Room, Pitstone
Memorial Hall
Guider Yvonne Ashton 01296
660044

"To join us, please visit our website at
Girlguiding.org.uk"



1st Ivinghoe & Pitstone Scout Group

Any queries contact:

Group Scout Leader: Michelle Lee 01296 668467 or
putsevlee@gmail.com

Scouting Times:

Beavers: (5½-8years)

Watermill: Monday 6-7pm

Leader: Andy Broad

Windmill: Monday 7-8pm

Leader: Keith Steers

Contact: Michelle as above

Cubs: (8-10½ years)

Windmill: Wednesday 6.30-8pm

Leaders: Rob or Andrea Haddock 01296 663615

Watermill: Thursday 6.30-8pm

Leader: Mattie Mackinder 01442824358

Scouts: (10½-14years)

Friday 7.30-9pm

Leaders: Russell or Rachel Smith 01296661213

- Wiring
- Sockets
- Lighting
- Testing
- Inspection
- Alarm systems
- Telephone
- TVs
- PCs
- Installations
- Additions
- Fault finding
- Repairs



BEES Electrical Ltd

**Reliable and approved work of the highest quality,
for all your commercial and domestic electrical needs.**

From wiring, sockets and lighting to testing and inspection and everything in between. Approved by Trustmark and Elecsa for your complete peace of mind.

All work is carried out to comply with British Standards BS7671 (17th edition) and Building Regulations Part P.

We are fully qualified and insured and all work is guaranteed so you can feel completely assured of our quality and reliability.

No job is too small. For a free estimate please contact:

Mike Smith

Tel: 01442 878 416

Mob: 07790 885 189

bees.electrical@gmail.com





Ivinghoe Town Hall

**Historic user-friendly Hall with
awards for Best Used and Managed Small Hall
in the County**

Sited in the centre of the Village, the Town Hall provides modern facilities for local groups, parties and fundraising activities.

Facilities include:

Improved lighting, heating, and new upholstered chairs

Music options including quality electronic piano

Stage with specialised lighting, curtains and dressing room

New kitchen with microwave, oven, hob, fridge, comprehensive crockery and glassware

Chair lift/wheelchair for those with mobility problems

If you want to know more contact Carole Wesley; Tel: 01296 661094

Do you want a local reliable

PLUMBER

that you can trust?

**Installation of bathrooms,
kitchens, washing machines,
taps, radiators, towel rails etc.**

Call John Byrom in Pitstone

07860 340 130

www.johnbyromplumbing.co.uk

actually decide to send them. We take children from the age of two years old right the way up to aged five – if you would like to arrange a visit, please email our administrator Claire Hose at admin@windmillpreschool.co.uk

We need you

Part of our success as a pre-school is the role the parents or carers play within the setting. We currently have a very small number of enthusiastic volunteers that come in and help out. This can involve helping with crafts and messy play, reading stories, baking or helping with tidying and clearing up at the end of a session. We would like to invite members of the local **community to get involved. You don't have to be a parent of a child currently attending Windmill – if you could spare a couple of hours on an ad hoc or regular basis we'd love to welcome you in to the setting - you would need to undergo a CRB check if you become a regular volunteer).** To register your interest in volunteering please email admin@windmillpreschool.co.uk

We particularly welcome dads, or people with interesting jobs to come in and get involved. So if you are good at sport, or are a fire fighter or you work in the police, maybe even a gardener, doctor, nurse or dentist and could spare some time to come in and talk about your job, the children would love to meet you, so please do get in touch.

During this academic year, we would love to hear from anyone who can speak a foreign language or is from a different country that would like to share their experiences of a different culture, language, food or life style.

Gail Dodsworth, Chair, Voluntary Management Committee

CHURCHES

Bucks Historic Churches Trust Ride & Stride 2013- Thank you

A big thank you to Chris Grimmette, Brenda McAllister, Mary Cook, Angela Hollands and her Velo Tea Riders team, Elizabeth Carpenter and Charlotte Robinson who took part in **this year's sponsored Ride & Stride on behalf of St Mary's, Ivinghoe. Thank you also to all the generous people who have sponsored them.** The total sum they have raised this year will be over £600 which is brilliant and there is still gift aid to be added. Half of this money will go to St Mary's, Ivinghoe and the other half will go into a fund that the Bucks Historic Churches Trust is able to distribute to churches and chapels of any Christian denomination that need help.

Finally, thank you to everyone who manned Ivinghoe Church welcoming the visiting walkers and cyclists and to Janice for the delicious sandwiches and cakes. During the day, Ivinghoe Church welcomed 28 people and 19 people signed in at Pitstone Church.

Need a reliable, local car mechanic? Safe & Sound can help

- ▼ **Local** – Business trading in Long Marston since 1999, with hundreds of satisfied customers
- ▼ **Value** – Sensible prices for servicing; tyres & exhausts at competitive prices
- ▼ **Convenient** – FREE courtesy car with local collection & delivery available
- ▼ **Straightforward** – Down-to-earth advice and approach
- ▼ **Seasonal check** – FREE check for summer holiday driving or winter driving



Call Jerry on 01296 660707

Unit 11a Airfield Industrial Estate
Cheddington Lane, Long Marston, Tring

All makes serviced

- ▼ MOT testing
- ▼ Repairs including welding & mechanical
- ▼ Air conditioning repairs & servicing
- ▼ Engine code reading



01296 660707

www.safeandsoundautomotive.co.uk
Email jerry@safeandsoundautomotive.co.uk

(Continued from page 16)

Izzy Robinson

ST MARY'S IVINGHOE



St. Mary's, Ivinghoe

Dear Reader,

We have been so blessed here in our benefice with ever growing congregations; especially with more and more families being able to attend our 10am service at Ivinghoe. Out of this growth we have five young people and three young adults going forward for Confirmation on Sunday 29th September.

Our Sunday Children's church is increasing in numbers and we are actively seeking more adults to lead these sessions. With the success of Ivinghoe's after school club we now have begun clubs at both Slapton and Marsworth.

We are delighted that all our efforts in making our churches family friendly are going to be recognised by a celebration with the Archdeacon of Buckingham on Sunday 17th November at Ivinghoe church, with a short service and shared lunch, as she **presents Ivinghoe and Slapton with the 'Oxford diocese family friendly church' awards.** We shall then be able to display these awards on the doors of our churches so that everyone will know families are welcome.

I can't believe that I am now talking about Christmas. You will have seen some of the exciting things that are going to be happening in and around the church and it would be lovely to see you on any of these occasions.

May I take this opportunity to wish you all a very blessed Christmas and a Happy New Year and thank you all for your love and support over this past year.

God bless

Rev Tracey

Bible study groups

Our evening study meets on the 2nd and 4th Mondays of each month at 1 Queen Street, Pitstone at 8pm; our daytime study is on the 1st and 3rd Thursdays of the month at 5 Windmill Close, Ivinghoe at 10am. Everyone is welcome no matter what age or stage you are on your Christian journey.

Not Sunday, Not School at Ivinghoe church

These sessions are held fortnightly from 3.30pm – 5pm. The children will be provided with refreshments and the sessions generally include stories, songs, craft activities, games and

cooking. This club is for children aged 3-11years. Parents why not come along relax and have a cuppa and a chat while your children enjoy themselves under friendly supervision. If you would like to know more information please contact Rev Tracey on 668260.

Alternative Halloween Party

Why don't you give trick or treat a miss this year and come to our alternative Halloween party? Come and enjoy a party that doesn't celebrate the darker side of Halloween.

Our church family invites you to a 'Bright Light' party on October 31st from 5pm until 6.30pm. at St Mary's church Ivinghoe. It will be filled with crafts, games and food. If you would like to; come dressed in your brightest clothes. We hope to see you there. More details from Tracey. 668260

All Souls service

Late autumn seems to encourage quiet reflection. For many it can also be a time when the pain of bereavement is felt particularly keenly.

On 2nd **November at 4pm at St. Mary's church we will be holding a special memorial service** for those who would like to have a chance to remember their loved ones who have died, both in the recent and not-so-recent past.

This service is not restricted to those who had a funeral service in church; it is an open invitation to anyone who has lost a loved one.

There will be a list at the back of each church during the weeks leading up to the service to place the names of those you wish to be remembered which will be read out during the service. Please PRINT the name clearly.

If you would like to know more about the service, please speak to Tracey or phone her on 668260.

Remembrance Service and Parade

10th November at Ivinghoe church at 10.30am.

17th November at 12pm - Celebration service and presentation led by the archdeacon of Buckinghamshire Followed by a shared lunch. Archdeacon Karen will be **presenting Ivinghoe church with their 'family friendly church' award which is a colourful plaque** that we will be able to display to let everyone know that children and families are always

First Thursday Friends

CREAM TEAS

DATE: Thursdays - 5 September, 7 November, 8 February

WHERE: The Millennium Room at Pitstone Memorial Hall

TIME: From 2 p.m.

Do come and join us for friendly chat and cream teas from £2.

FILM MATINEES

DATE: Thursdays - 3 October, 5 December, 8 March

WHERE: The Millennium Room at Pitstone Memorial Hall

TIME: 2 p.m. tea / coffee then film

Film free - contribution for refreshments and venue welcome.

DIRECTOR

'First Thursday Friends' events are open to everybody and are organised by the Pitstone Fellowship - a Christian group who meet in the Millennium Room each Thursday at 11.00.

"Pitstone Community Film Club is pleased to announce that our first public screenings are arranged.

In November we will be showing *Song for Marion*, a touching comedy-drama starring Terence Stamp and Vanessa Redgrave:

Friday 15th November 2013 at Pitstone Memorial Hall Time. Doors open 7:30pm, film starts at 8pm. Certificate: PG. Prices: Adult - £5, Child (14 and under) - £3

In December we will be showing Disney's *The Lone Ranger*, starring Johnny Depp:

Friday 13th December 2013 at Pitstone Memorial Hall, doors open 7:30pm, film starts at 8pm Certificate: 12A Prices: Adult - £5, Child (14 and under) - £3

Tickets are available from the Beacon Villages Community Library, or from Klaus Ginda (01296 668911). Tickets are limited so please book early to avoid disappointment. We must enforce film certificates so proof of age will be required for all screenings.



PIANO LESSONS

PLEASE CONTACT

NIKKI MATTEY

(Dip Mus, BA (Hons) Open Music

For more information and availability

on 01296 662691 or at

nikkimattey@hotmail.com



COUNSELLING

Can't communicate any more?

Abusive relationship?

Can't get over the loss of a
relationship?

Difficulties with stepchildren?

Living with domestic violence?


Problems with stepchildren/
divorce/affair?

Call 07778802748 for initial 15
minutes free consultation

Franzella Flowerdew
Cert. CC Relate, DipPST
www.talkingsgood.com
Email:
franzella.flower@googlemail.com



Flute Lessons




Kate Hunter
MMus. BMus(Hons)

01296 706 436

katehuntermusic@outlook.com

Baby's First

Café, Pitstone



The Café is a meeting place for breast feeding mums to meet other mums and to chat about breast feeding problems with a trained advisor over coffee and biscuits.

**Meeting at Ivinghoe and Pitstone
Sure Start Children's Centre,**

Brookmead School, High Street, Ivinghoe at the new time of 9.30 – 11.00.

(access by the path to the right of the school entrance).

welcome to anything going on in the church. Please do come and join us and give thanks for our wonderful team who have worked so hard to obtain this award.

Taize service

St Mary's Pitstone on 29th November at 7pm. A reflective candlelight service led by Ivinghoe choir. Please wrap up warm.

Men's Group

The men's group have enjoyed some excellent events over the summer as well as helping out with some work in the church yards. We have an event each month; always relaxed, generally fairly unstructured and inevitably involving food and ale. The programme for the next six months is as follows;

October: Curry Evening at the Vicarage; *November:* Golf at the Driving Range ; *December:* Breakfast at the Vicarage; *January:* Jazz night at Tring Cricket Club

Detailed information on events is circulated by email; please contact mick-doyle.consult@btinternet.com to be included in the circulation.

New members and new ideas are always welcome. Please ring Mick on 01296 668260.

Reel Issues

Reel Issues is a film club which aims to draw out themes and ideas from the films we watch. We meet on the 2nd and 3rd Tuesdays of each month; 7.30pm at the vicarage. The idea is to watch the film together on the first evening and then to discuss it the following week. It is open to everyone. If you want to know more contact Rev Tracey on 668260.

The All New Sister Act

Friendly women's group meeting once a month to enjoy a variety of activities and outings;

Dates and activities as follows: October 21st at 7.30pm – Travelling Trends selling high street fashion - **fashion show in St Mary's church Ivinghoe in aid of our villages food bank.** Tickets on sale from Tracey at £5 to include refreshments. Models needed. November 25th – a visit to Milton Keynes theatre to see the Soweto Gospel choir – fully booked; December 3rd – Christmas crafts. If you think you may be interested contact Tracey on 668260 for more details or just turn up and have some fun.

Food Bank

We have started a regular collection for a food bank. There is a box at the entrance of each church to place gifts of food. There will be a list of items that are needed for your guidance. Please give generously.

	1 st Sunday	2 nd Sunday	3 rd Sunday	4 th Sunday	5 th Sunday
Marsworth	8 am BCP Holy Communion	6pm BCP Evensong	10am Holy Communion	10am Worshipping together family service	10.30 am * Benefice H/C
Ivinghoe	10am Worshipping together family service	9.15 am Holy Communion	9.15am Morning Praise	9.15 am Holy Communion	10.30 am * Benefice H/C
Slapton	10.30am Morning Praise	10.30am Holy Communion	10am Messy church in the village hall.	10.30am Holy Communion	10.30 am * Benefice H/C

* Benefice service rotating round the three parishes

Advent Sunday 1st December: We will begin the day with a family service at 10.30am; this will be followed by a craft workshop, which will include making our Christingle oranges for the service later in the day. We will be taking a break at 12.45pm for a shared lunch. At 2.30pm we will have a Christingle celebration. Everyone is welcome and you are invited to share in the whole celebration or just come for part of the day.

At the Advent celebration we shall launch our nativity display, this will also include an angel hunt for the children. Refreshments will be available at most showings. If you would like a group booking please call Rev Tracey on 668260.

Children's Christmas party will be held on Thursday 12th December at 4 – 6pm in the Millennium hall, Pitstone. We have booked an entertainer and a visit from Father Christmas. If your child would like to come please book with Rev Tracey on 668260.

Senior citizens Christmas Lunch will be held on Friday 13th December at 12pm in the Memorial hall. We are expecting Brookmead school choir to entertain us with their angelic voices and I'm sure as always we will be having a special visitor. Please phone Rev Tracey on 668260 to book your place. Transport can be provided.

9 Lessons and carols 15th December at 6pm. Come and hear the Christmas story and sing your favourite carols by candlelight. Refreshments available after the service.

Christmas Eve 3pm Children's nativity service. A short service for all the family to enjoy. The children will act out the nativity story. All children are invited to take part and

(Continued on page 27)

Williamson Trust and Pitstone Town Lands Charity

The two charities have welcomed Dave Nicholls and Rachel Edwards as new Trustees to support the continuing local work of the charities and thank Gill Lowe for taking on the role of chairlady. Current priorities are to put the new assets to the best possible use in **pursuing the charities' objectives of supporting Pitstone people in need. A new tenant farmer has been contracted to farm the newly acquired fields and the rental income from this is an important part of the charity's resources.**

The Trustees are now turning their attention to the accommodation owned by PTLC. In previous centuries, the charity had owned several properties in the village and it still owns a large building on Cheddington Road which was converted from two houses into four flats in the mid 1960s. However, the properties are considerably older than this, having originally been built in the 19th century. The Trustees are exploring ways of improving the quality of this accommodation and whether they can attract additional grants or use the land around the flats or other assets to provide more modern facilities and possibly additional flats. They would like to hear from local people about whether and how this would benefit them. The charity can only support people with a strong Pitstone connection. At the Party in the Park in July, the Trustees began a consultation and are inviting people to make any comments or suggestions and to answer these questions:

- How are you connected to Pitstone?
- Do you wish to be considered if one of our one bedroom flats becomes available for rent? If so, what are your current living circumstances?
- Have you or a family member from Pitstone had to leave the area in order to obtain affordable rented accommodation?
- Do you consider yourself to be in need of any other type of accommodation in Pitstone which could be provided by a charity established to support Pitstone people in genuine need? If so, what type of accommodation would that be?
- What is your age group?

Anybody who wishes to find out more about either charity or to bring to our attention a local need should contact one of the trustees:

- | | |
|---|----------------|
| • Gill Lowe (Chair), 21 Rushendon Furlong | ☎ 01296 668809 |
| • Kate Smethers (Treasurer), 41 Albion Road | ☎ 01296 661499 |
| • Mark Robinson, 77 Crispin Field | ☎ 01296 660724 |
| • Peter Loose, 21 Albion Road | ☎ 01296 668051 |
| • Sue Gregory, 4 The Crescent | ☎ 01296 661609 |
| • Dave Nicholls, 64 Marsworth Road | ☎ 01296 661910 |
| • Rachel Edwards, 65 Old Farm | ☎ 01296 661953 |

plumb it all

Professional Plumbing and

Heating Engineer

Gas Safe Registered

Full Central Heating Systems.

Gas Boiler Servicing

Bathroom Installations

Small Jobs happily undertaken

Contact Richard

Phone: 01296 709961

Mobile: 07720 265645

plumbitall1@gmail.com

ToWn FaRm ART SHoW

Paintings, Ceramics
Woodcarving, Woodcraft
Basketry, Textiles, Jewellery
www.townfarmartshow.blogspot.com

Festive show in Cheddington: a warm welcome,
mulled wine, mince pies and Christmas cake,
plus unique, high quality Christmas gifts.

ONE WEEKEND ONLY
Friday 22 ~ Sunday 24 November
10am ~ 5pm

6 Town Farm, Cheddington, Nr Tring, LV7 0TT

PLEASE PARK ON HIGH STREET - NOT IN TOWN FARM

Free entry - Donations for refreshments:
in aid of Rennie Grove Hospice Care

James B Chadburn FBHI Fine Antique Clocks & Barometers

Specialist in repairs &
restoration

Valuations & clock finding
service.

Advice & assistance on
formation & disposal of
private clock collections.

Quality clocks / barometers Bought
& Sold.



Tel: 01525 221165

Mobile 07790 000629

Email: info@jameschadburn.com

The Blindman

Curtain and Blind Specialists

Curtains . Poles . Tie Backs . Cushions

Roller . Pleated . Woodslat

Woven . Vertical . Venetian

**Huge choice of fabric
or supply your own**

Free friendly advice and quotation in the comfort
of your own home.

01442 822 055 & 07767 783 955

www.theblindman.uk.com



Santa Cruises

**Come and meet Father
Christmas on the canal!**

1 hour cruise from Pitstone Wharf

Sat 7th Sun 8th Sat 14th Sun 15th Sat 21st
Sun 22nd Mon 23rd Dec Tues 24th December

All cruises at 1.45pm

£8.75 per person

Glass of mulled wine & mince pie for adults
Juice and present for children.

Please telephone for details & reservations

Charters available for groups of 30 plus

**GREBE CANAL
CRUISES**

01296 661920

Pitstone Wharf, Pitstone LU7 9AD

www.grebecanalcruises.co.uk



(Continued from page 23)

can come dressed as shepherds, angels, animals etc.

Midnight Communion at 11.30pm Everyone is welcome to worship with us on this very special night.

Christmas morning at 9.15am Joyous family service to welcome the new born Christ.

PASTOR DAVE CALLING

As I write this I look out of the window at a sunny crisp autumn day, the leaves rapidly **changing from green to gold, or so it seems to me, I begin to think of the beauty of God's** creation. My favourite times of the year are spring and autumn. The moderate temperatures, no factor 50 required, some still in shorts while others break the overcoats. But there is **something different about them, almost encapsulating the 'circle of life' experience.** Spring with its budding, green shoots of new life, and autumn, the colour changing hue after hue, the falling of the leaves and bareness of trees as winter approaches. Yet there is a hope – we know that in a few short months we will be witnessing the rebirth again and so it goes on.

This is our season of harvest in the church. On October 6th we celebrated our Harvest Festival service with joyous music from Leighton-Linslade Concert Band who once again inspired our singing of hymns and songs both ancient and modern as we thanked God for his provision and celebrated the evidence we see of him day by day in his creation around us.

In September we started a new venture called 'First Thursday Friends'. Meeting on the first Thursday afternoon in the month at 2.00 in the Millennium Hall, we enjoyed a time of coffee and cream teas and good a good old chinwag. Believe me the world was well and truly put to rights. It was a delightful time with good food and good company, about fifteen attending. **October saw the first big screen 'Film Matinee' with twenty people attending. We watched 'Chariots of Fire', Britain's first medal successes in the 1924 Paris Olympics by Abrahams and Liddell, complete with popcorn, sweets and ice creams at the interval. A good time was had by all. We continue in November with 'First Thursday' Cream Tea, and December our second Matinee – all are welcome. Notice boards have full details.**

We shall, of course, very soon be into the Christmas season and this year we want to offer another Community Carol Service with LLCB on December 15th with a very special nativity. Keep your eyes open for that.

Every blessing from the Fellowship,
Pastor Dave Clifford – 01296 668906

PITSTONE CHURCH

(Continued on page 29)

TringMarket Auctions

*AUCTIONEERS & VALUERS OF ANTIQUE FURNITURE
COLLECTABLES & FINE ART*

GENERAL SALES OF ANTIQUE FURNITURE,
FURNISHINGS & EFFECTS

The largest General Sale auction in the area.

Up to 2500 lots every fortnight

FINE ART SALES

Antique furniture, treen, metalware, silver, pictures, glass, ceramics, jewellery and Objets d'art.

Up to 700 lots every other month

VALUATION FOR SALE, INSURANCE,
TAXATION & PROBATE

We provide valuations for a variety of needs

TOTAL AND PART HOUSE CLEARANCE SPECIALISTS

FREE AUCTION VALUATIONS

Buying or Selling Contact us:

Tel: 01442 826446 Fax: 01442 890927

The Market Premises, Brook Street, Tring, HP23 5EF

www.tringmarketauctions.co.uk

E-mail: sales@tringmarketauctions.co.uk

The Annual festival of Art, Flowers, Crafts and Music was attended by over 500 people over the May Bank Holiday weekend. The homemade refreshments were much appreciated, the crafts were especially well sought after, the great variety and professionalism of the music and pictures was enjoyed by all of the generous visitors. Nearly £1,000 was raised for the Churches Conservation Trust who maintain the building so well. Thank you to all who supported this event and to all who work so hard to make it happen.

The Church now has a smart new, informative and illustrated leaflet to guide you round the church. There is extensive research going on so that next year, when the Church opens on Summer Sunday afternoons, you will be able to learn more about the rare medieval tiles in the chancel and the early history of Pitstone itself.

The Concert in July was well attended, we were delighted to be told that the Icknield Sixteen and the Bridge Players are planning another concert for July 2014. The acoustics and light are so good for music and photography we have been able to let the building be used for both activities this year.

The Church is still consecrated and can be used for services. Three evening services are **held there most years and St. Mary's Church Ivinghoe choir lead the singing, those who** come often marvel that such a beautiful church is no longer in regular use. We are lucky to have a group of Friends of the Church and we are always looking for new members to help with stewarding on summer Sunday afternoons and general maintenance jobs.

Please contact Vanita on 661968 or Joan on 668806 if you feel you could lend a hand.



ipms churches present

Mary!

A Nativity Musical

St Mary's Church, Ivinghoe

Sunday 8 December 2013, 3 pm and 6 pm

NATIVITY PRODUCTION - EXTENDED PLAY FOR MARY!

The community Nativity, presented by the combined local churches of Ivinghoe, Pitstone, Marsworth and Slapton, is now in its fifth year and has become a fixture in the local Christmas calendar and is a real community production, with local actors, singers, choristers and musicians all coming together to present the Christmas story.

Last year's production - *Mary! A Nativity Musical* - was a singing, dancing, musical with original songs and music by Dave Sivers and Judith Sheridan and proved hugely popular with its audiences. More than 40 people were involved in the 2012 production, and its success has inspired the company to extend the show into a full-length production with more scenes and four new songs.

"After all the work that went into last year's show, everyone wanted to do more with it," said scriptwriter, lyricist and director Dave Sivers. **"We know everyone who saw it loved it, and many people who missed it were disappointed.**

"This slightly longer show has most of the original cast, and we are all very excited about the new songs that will be performed alongside the ones that everybody enjoyed last year." Mary and Joseph will again be played by Amanda Comley and Toby Payne, with other members of the **Beacon Theatre Company and St Mary's Choir and Music Group and friends** completing the large ensemble. Judith Sheridan, who co-writes the music with Dave, is the Musical Director.

The show takes place at 3 pm and 6 pm on Sunday December 8 in St Mary's Church, Ivinghoe with Pitstone.

"Everybody is excited about doing the show in the church this year," said Dave. **"Previous productions have been in various outdoor venues, but it just seemed appropriate for our most ambitious venture yet to bring the Nativity story to the church."**

Note the date in your diary now and watch out for notices, flyers and items in the local press with further details. To go on an emailing list for show information, contact marythemusical@hotmail.com.

COMMUNITY GROUPS

IVINGHOE AND PITSTONE WOMENS INSTITUTE



It seems a long time ago now, but our July outing, arranged by Lesley and Annie, was a very happy event. Most of our members were in attendance, and we drove to Ellesborough, where we were shown around a wonderful garden that was so large and diverse in planting that there were 16 different seating areas. The weather **was everything it should have been on a summer's evening in July,** and the garden itself was owned by a member of Kimble and Ellesborough WI who afterwards fed us a beautiful meal, the star of

(Continued on page 32)

Creases

Ironing Service

01442 243633
01296 291504
07872 443089

Professional Ironing and Dry Cleaning Service
 Excellent value and most reliable service around
 Evening and/or daytime collection and delivery
 20% off first order for all new customers!!

www.creases-ironing.co.uk

Established since 2001

The Village Health Centre Pitstone

Tardley Avenue, LL7 9BE

- + Serving all local villages
- + Good parking and easy access
- + Wide range of services

*Dr. Richard J. Bell, Dr. Stephanie Johnson,
 Dr. Kirsten Riemer, Dr. Tisha Patel*

Opening Hours: 9-12am and 2-6pm
 except Wednesday: 8-12am closed in the afternoon
 Friday: 9-12am and 2-5pm

Dispensing Practise

Phone: 01525 223211

STANDY'S

CHRISTMAS MARKET

CARDS & PRESENTS
 CAKES
 WINE
 TOMBOLA
 MINCE PIES
 BOOKS & MUSIC
 A CUPPA
 BIG RAFFLE
 TOYS
 FATHER CHRISTMAS

PITSTONE MEMORIAL HALL

SAT 23rd NOV
 11-3

BLOOMFIELD WINDOWS & DOORS

- * Conservatories
- * Hardwood - UPVC
- * Aluminium - Secondary
- * Porches

10 YEAR GUARANTEE

FENSA Registered

Tel/Fax: 01442 824333
 Mobile: 07836 640448

(Continued from page 30)

which (apart from the puddings that is) was the locally sourced ham. They didn't actually know the precise pig by name but did assure us that it had grown up nearby.

Rachel did a wonderful job for us with the massage workshop at the end of July, and it was so successful there have been requests for another which we could possibly arrange for early in the New Year when things seem to grind to halt after Christmas, sorry for mentioning *that word*.

In August the weather wasn't quite so kind when we gathered on the Village Lawn for our picnic. It was very gloomy, although the rain did hold off whilst we ate. Afterwards there was Jenga and Hoopla before going into the Town Hall for a nice cup of tea and a small number of business items. Unlike the July meeting numbers were very low on this occasion, perhaps it was holidays or perhaps we need to re-think this one?

Our talk on Aromatherapy seemed to be well received in September, and at the time of writing we are looking forward to a visit from the Doctor - **now that's not something you** usually hear is it? Dr. Tony Maisey is going to talk to us about SPARE PART SURGERY - who knows what we may have heard or seen by the time you read this!!

Our tickets for the Quiz night on October 26th seem to be selling well at the time of writing and hopefully we will have had a great night and raised a lot of money by the time this is published- my fingers are very firmly crossed to that end!

A trip to Westonbirt Arboretum is planned for the end of October /beginning of November. Depending to a large extent as it does on the way the weather affects the colour of the leaves, I really hope this takes place, because the trees can look absolutely spectacular if it has been cold and dry for a spell. We shall see (oops-unintended pun there).

Again this is quite a difficult article to write, as so many important things are going on between writing the article and it being published. We are looking forward to a Christmas craft workshop on Saturday November 16th and hopefully that will work as well as our workshops usually do, they always seem to be very popular among members.

Well here we are again -the last article of the year for this magazine and at this moment in **time I don't know who will be President next year, who will be writing the articles for the Village magazines next year, or even if there will be a WI in existence next year.** I am sure that someone *will* step up on the night of the AGM but yet again it has been a bit of a rollercoaster ride. We had the same problem this time last year, no-one wanted to be President, so I plugged the gap as it were. There have been some really good moments, but I am sure that there is someone out there who will do a very good job for our WI next year, and I hope the committee will give them all the support they need. My thanks go to all the good friends who have given me their unstinting support as always, you know who you are so I

won't mention you by name and embarrass you, but your help through the difficult times has been very much appreciated.

When Christmas does come I hope it will be a very happy and peaceful one for you and yours.

Maggie Halsey President of Ivinghoe and Pitstone WI

PITSTONE AND IVINGHOE TODDLER GROUP

Our group runs every Wednesday during term time between 1.15 – 3.00pm in the Pitstone Memorial Hall, £2 per family per session.



Termly round Up

We have enjoyed a busy term, with card making for Father's day, song times with our new brightly coloured parachute, story time with Tracy our Vicar, 1st Kick, Singing Helen, D Beats all came to give us a free taste session and coming 2nd in the Ivinghoe and Pitstone fete with an amazing hungry caterpillar float. What a fun day that was, our highest position to date and even the rain didn't stop us celebrating. The summer term was rounded off with a great summer party with Doodle Caboodle help. Many thanks to them.

We are delighted that so many new families have joined toddlers over the year, our group is really growing and each week the hall is full of busy, happy children and families. Of course, as the group grows so does the workload for our volunteers. Naturally, as our children grow the member's also find their ability to support the group naturally changes and we are always keen to recruit new members onto the committee, or for people to come early and help set up, or stay and clear away. If you feel you could help in anyway however big or small please let us know. 4 members of the committee are stepping down this Christmas, we are very keen for volunteers to step forward!

Coming up

We have been busy planning activities for the coming weeks and have plenty of craft, messy play and fun activities ready to engage the little ones. We have some special afternoons planned for Halloween, Bonfire night and the big count-down to Christmas, but in the mean time there are some exciting themes we want to explore with the children as National world animal day, National space week, National children's book week and National baking week are upon us in October. We also have photo's with Carrie on 13th November, Children in need teddy bear picnic 13th November, 20th November Shopping event, 18th December Xmas party, all to look forward too.

(Continued on page 38)

PARTY IN THE PARK



SEE YOU NEXT YEAR!





Enjoy homemade food at the

WATERSIDE CAFÉ

Pitstone Wharf, Cheddington Road, Pitstone, Bucks LU7 9AD

**Breakfasts, Lunches/Soup, Sandwiches,
Cakes, Cream Teas plus Hot and Cold Drinks**

Spring/ Summer Opening Hours

(March to October) Wednesday to Sunday & Bank Holidays (10am.to 3pm)

We are happy to open on Mon. or Tues. by prior arrangement for group bookings

(August Daily - 10am.to 3.30pm)

We can offer a 2 or 3 course set lunch menu for parties of between

20 and 35 people. Please call Mary 07791 956152 or

Email- cafe@pitstonewharf.co.uk

www.pitstonewharf.co.uk

Little Cravings



Catering

From dinner parties to
weddings we specialize
in bespoke menus
for your individual
consultation,
please call

07980 615 798

Buy Direct, Quality Turf Grown at our own Farm

Family Firm, Farming since 1949

3 Grades of Turf
Weed Treated and Fertilised
Discounts on large Loads
Small Orders Welcome
General Public and Trade Enquiries Welcome
Palletised Delivery



IVINGHOE TURF

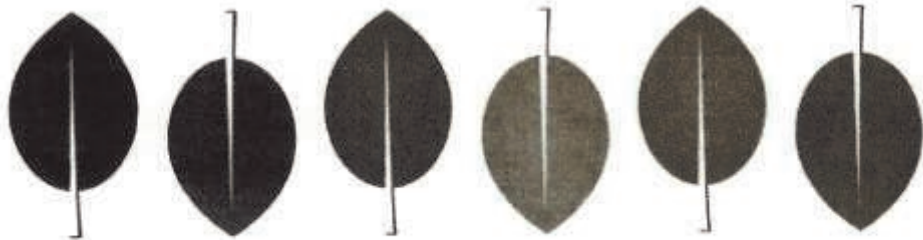


(01296 661939)

www.ivinghoeturf.co.uk



The Bungalow, Vicarage Farm, Ivinghoe, Leighton Buzzard



David Gooch Landscaping

patios - driveways - lawns

free estimates call 07976 227785

dgoochlandscaping@btinternet.com



JC KITCHENS

~Design-Build-Installation~

A complete kitchen installation
Service from off the shelf
to hand made.

Free planning and advice.
Ring for a friendly affordable service.

Call James on
Daytime: 01296 660605
Evening: 07730574466

(Continued from page 33)

About us

The baby and toddler group is an integral part of life in the village and offers a wonderful opportunity for parents, grandparents and carers to meet and enjoy a cuppa together. There have been some good friendships formed amongst both the parents and our younger members. Many of the children form friendships with those they later go to pre-school and then school with therefore helping them settle into their new environments happily.

Each week we offer art, craft and messy play activities which allow the children to express themselves creatively whilst keeping their home mess free! Our toddlers have access to a range of toys and activities such as dressing up, train tracks, slides, trikes, trampolines etc. We are able to alternate these toys to keep everyone happy and entertained.

There is a safe soft area with a wide variety of toys for babies to explore and have fun until they are ready to venture out into the larger area of the hall.

A snack and drink is provided for the children, whilst tea, coffee and biscuits, (sometimes cake!) for the adults at no extra cost. The sessions either end with a story time or sing along session, which the children really love and can now involve games with our bright coloured parachute.

Throughout the year, we welcome visits from local organisations and enterprises with products such as books, cosmetics and jewellery to name but a few. This offers great retail opportunities for parents and local entrepreneurs and as 10% of all sales come back to the group, it is a great way to support the group. If you or anyone you know would like to run a stall or give a demonstration at a session please contact via Facebook or our website. Website: www.pitstoneandivinghoetoddlers.btck.co.uk Facebook: Pitstone and Ivinghoe baby and toddler group

Clare Cleland – Committee



THE BEACON COMMUNITY CHOIR SING **FAURE'S REQUIEM**

The 19th century French composer Gabriel Faure is best known for his Requiem, which has become much-loved and has served as an inspiration for choirs, audiences and congregations **around the world. The work has been described as being “both intimate and peaceful” and is celebrated for the beauty of its melodies and the “wonderful colour of its orchestration”.** On this occasion, the Beacon Community Choir will be accompanied by organ, harp and strings, and will be conducted by Judith Sheridan.

The concert will be held at 6 pm on Sunday 24th November, in St. Mary's Church, Ivinghoe. **The programme will also include Faure's piece The Cantique de Jean Racine, and French**



Ivinghoe &
Pitstone Scout Group

Christmas
CAROL CONCERT

Monday 16th December
7pm till 9pm

St. Mary's Church, Ivinghoe

Music by MAT's (Music at Tring School)
Swing Band plus
Singing from the Barber Boys
and a 'raffle'

£1 entry including refreshments

instrumental pieces from the 19th century.

Tickets are £10 per adult (children free) and include refreshments. They can be obtained from Charles Thorogood (01296 661540, or charles.e.thorogood@btinternet.com) or from any choir member, and are available now.

IVINGHOE ENTERTAINMENTS

It is amazing how quickly the nights have closed in – British Summer Time coming to an end marking the commencement of the winter season.

Bonfire & Fireworks Saturday 2nd November

Our next event will be the Annual Bonfire & Fireworks on 02-November. The event kicks off at 18:00 with the bonfire being lit at 18:45 followed at 19:15 by a spectacular fireworks display managed by our team of trained pyro-technicians.

As previous years we will have musical accompaniment to the fireworks display provided by Dave Mann. As is tradition at Fireworks night there will be a BBQ including hot & cold drinks, and a Fairground ride to entertain the children. Naturally we hope that the weather will be kind to ensure that the event will be a great success.

Please note that it is a condition of our insurance that no personal fireworks (including sparklers, etc.) are brought onto Ivinghoe Lawn.

Tickets will be available in advance, at a discount, from Masons (Pitstone), Post Office (Ivinghoe), Grooms (Ivinghoe) and The Rose & Crown (Ivinghoe) £9 Family, £4 Adult

from mid-Oct. Tickets will be available on the night at £10 Family, £5 Adult.

You are welcome to bring your combustible waste on the Saturday morning for the bonfire from 09:00 until approx. 12:00 – there are certain materials that we are unable to accept (e.g. tyres, foam, etc.) and these will need to be taken to the local recycling depot. Marshals will be available to assist with the unloading from 09:00.

Summer Festival 2013 Review

Both the Summer Ball & Laughter-on-the-Lawn were a great success and we received substantial feedback via our on-line survey. While the feedback was in the main positive there were a number of improvement opportunities identified. Based upon the feedback we have identified the following changes for 2014: Catering, Band/Sound Quality for the Summer Ball, Photographic backdrop for the Summer Ball, Tables for the Laughter-on-the-Lawn, and more robust audience control.

Summer Festival 2014

Planning for the Summer Festival is underway and scheduled for Friday 20-Jun-14 & Saturday 21-Jun-14 the exact format has yet to be agreed and will be published in the next update. If you would like to contribute ideas for either the Summer Ball or Laughter-on-the-Lawn please email: ivinghoeentertainments@gmail.com or speak to a member of the committee.

Ivinghoe Christmas Tree

We are in the process of negotiation to erect a sapling Christmas Tree on the area opposite the Kings Head, Ivinghoe so that we can do our little bit to improve the envi-

Is This Your Idea of Computers?



Why not come and see what's possible -

**'Computers for the Petrified?'
at the**

MEETING ROOM

PITSTONE HALL

WEDNESDAY 10.30 -12.00

For further information Contact Linda or Pastor Dave Clifford on 01296 668906

ronment and sustainability. We hope to have the Christmas Tree in-situ by the end of November and illuminated from early December for the Festive Season

Web Site

Our website has the latest details of our events <http://ivinghoeentertainments.org.uk/>

Appeal for New Members

We are looking for new members to join our committee who can add to the diversity of our membership and provide fresh ideas to our events. We are particularly looking for new female members. Please contact me on 07768-727998 or eMail ivinghoeentertainments@gmail.com if you are interested in helping us. Thanks in advance.

Graham Hollands
Chair – Ivinghoe Entertainments

ivinghoeentertainments@gmail.com
Facebook: <https://www.facebook.com/IvinghoeEnts>
www.ivinghoeentertainments.org.uk/

OTHER UPDATES

Morgans visited Pitstone - 28th
September 2013



Thirteen Morgan sports cars and their owners visited Pitstone recently after an exuberant couple with a professional flair for organising events organised a scenic run through the beauty of the Berkshire, Oxfordshire and Buckinghamshire countryside. Ian and Kate Wilson, who own an exquisite Connaught Green Morgan 4/4 (meaning its engine has four cylinders and it has four wheels!) were keen to lead a group of Morgan sports cars from the Thames Valley Centre through the beautiful Chilterns. Ian crews on the Grebe **Canal Cruises' boats, so it was no surprise** that the scenic run culminated in a pleasant two hour cruise on the Grand Union Canal.

The day began at the Bird In Hand pub at Knowl Hill with Ian and Kate welcoming the Morgan owners and handing them their scenic route to Pitstone Wharf. The Morgan sports cars then headed out for the stunning Chilterns. The inventive itinerary looped back through quiet roads to Henley-on-Thames passing the late **George Harrison's**

home and the National Trust tudor property of Greys Court. Their journey also incorporated the breath-taking Bledlow Ridge with a fine view of the Chilterns providing their way forward. Looking out across the Chilterns the trees were just changing in anticipation of the forthcoming autumn, providing a beautiful additional vista to the run. One or two stopped off to photo their prides and joys outside Chequers before eventually crossing the Grand Union Canal (with a quick glimpse of the bottom lock of the seven locks of the Marsworth Flight) after which they were soon at Pitstone Wharf to board *Chiltern Countess*.

Parked up the Morgan sports cars were quite an attraction for the passengers of *Countess's* sister boat, *Princess of the Chilterns*. Our cruise on the electrically powered broad-beam canal boat was taken over entirely by the Morgan sports car club. Ian and Kate welcomed everyone aboard explaining the slower pace of the canal boating world. For example, did you know a journey from Pitstone to London would take a good seven days!

Chiltern Countess left her mooring and turned towards the Marsworth flight. Even though we were near the main railway line the scene soon became peaceful with a tree lined canal and narrow bridges skilfully navigated by skipper Stuart. We passed through the two **locks of Peter's Pair until reaching the turning** point at the Aylesbury Arm where hot fish and chips were delivered and served very efficiently by the crew – Matt, Emily and Elliott. Everyone enjoyed the lunch which was augmented by a well-stocked bar and constant tea and coffee. *Countess* made her way back to Pitstone Wharf with Ian and Kate keeping up a running commentary on sights **of general interest. Back at Peter's Pair, Stuart** the skipper allowed us to walk between

the locks for the return journey. This offered the opportunity to watch *Countess* descend the locks before the Morgan club revellers returned from an enjoyable cruise.

After the cruise a scenic run back to High Wycombe was provided enticing everyone into Wendover Woods passing the *Cock and Rabbit* – Roald Dahl's old local. **Beautiful Chiltern villages lined the route ultimately passing Hughenden Manor and NATO's Strike Command until High Wycombe was reached from where the Morgan "pilots" made their various ways home.** The weather was thankfully dry and bright throughout the journey as most Morgan sports car owners always drive stubbornly with their hoods down, exposing themselves to all the elements!

It had been a great day out, taking in some amazing scenery on road and canal. **Ian and Kate's event, ably assisted by the staff and crew of Grebe Canal cruises, had fully met its potential.** Many thanks were given to them – everyone will now look forward to their next outing for the Thames Valley Centre of the Morgan Sports Car Club.

Roger Bluff
Centre Secretary, Thames Valley Centre, Morgan Sports Car Club
www.thamesmog.co.uk

ROSE AND CROWN, IIVINGHOE



We've had a very busy summer thanks to the support of our local community, and the influx of guests from the Town Farm campsite as well as the other numerous attractions around our area.

But as I write this there's a distinctive Autumnal feel around. Saturday nights' television schedule is full of talent shows, or depending on your view point talentless shows. Thankfully we've the perfect antidote, whilst the TV schedule might not have anything new, we do. Charlie and his team have been busy behind the scenes, well actually in the kitchen, preparing our new Autumn menu. There's a fabulous range of new meals to feast on, each featuring fresh produce, freshly prepared and cooked to order.

How about a Marinated Beetroot and Grilled Goats, Rocket Salad and Balsamic Dressing to start?

Something Hearty on a cool evening? Then perhaps the Apricot and Cranberry Stuffed Lamb Shoulder with Fondant Potato, Rosemary Jus and Seasonal Vegetables is what you're looking for?

These are just two of the new dishes, but the best way to find out what's available is to come in and try some. To go with the new menu we've a host of great deals to make enjoying fabulous food great value. Please pop in to see our new menus including lunchtime spe-

cials, senior citizen lunches and to find out more about our special events throughout the autumn and beyond.

We welcome families, and many of the items on our menu can be ordered in smaller portions, and at a smaller cost, for children. We also serve our Sunday lunches and pub classics **in the evening so if you've a busy schedule during the day, you can still get to enjoy a great Sunday meal without the cleaning.**

So there we are, your Local—much better than Saturday night Television! We look forward to seeing you.

Gary and Kirk

www.roseandcrownivinghoe.com

WORKERS EDUCATIONAL ASSOCIATION: Ivinghoe and Pitstone Branch

In these hard economic times why not learn about how others have coped with a shortage **of cash by joining the WEA's literature course - 'A Matter of Money'?**

The course runs from 24 January 2014 at 10.00 am – 12.00 noon at Pitstone Memorial Hall and lasts for 8 weeks with a 1 week break for ½ term. It aims to link a number of literary **works from the mid C20 to the early C21 to the theme of 'Money'**

Course tutor Peter Leyland will be guiding you through the the following novels: Room at the Top – John Braine (Penguin); The Conclave – Michael Bracewell (Capuchin Classics); Tulip Fever –Deborah Moggach (Vintage); Capital – John Lanchester (Faber). For further details - please contact: Robert Chantry-Price on 01296 660202 or email: combo@gotadsl.co.uk

Would you like to join the WEA's 3,000 volunteers across the UK that help the Association - planning marketing and publicising its courses?. The good work we do in communities simply wouldn't exist if it wasn't for you! If you would like to join the local WEA Committee, please contact Robert Chantry-Price by phone or email.

TALES FROM THE COMPOST HEAP

Cool Composting

For many households, the days are gone when the compost heap really was a heap – a more **or less untidy mound of garden and kitchen waste, probably "housed" in a ramshackle enclosure** down the garden path, lurking behind the potting shed. Not that there is anything wrong with this – indeed, it is the time-honoured method used by gardeners over the centu-

ries. But nowadays most people have smaller gardens, and often the more convenient option is to invest in a bin made from recycled plastic; although not in themselves objects of beauty, they are neat and inoffensive, and can be discreetly sited wherever you can get at them easily; (even on paving slabs although grass or soil is preferable).

At the moment you can take advantage of a special offer to buy a bin from only £16.98, plus other environmental goodies such as rain saver kits (i.e. water butts). Look online at www.getcomposting.com or call 0844 571 4444 quoting reference BCC07L. For a modest outlay, you can start turning your compostable kitchen and garden waste into free compost to keep your garden blooming; how cool is that!

Chicken Feed



On the continent, it seems that an increasingly popular way of disposing of household waste is to invest in a coop and some chickens. I had not realized just how environmentally friendly a hen could be. Apparently a single bird can eat around 150 kgs of food scraps a year whilst producing 250-300 eggs, not to mention a supply of fertilizer for the garden.

I have heard of chicken schemes being promoted by communities in parts of Belgium and France, where apparently the interpretation of EU law differs from that of the UK (where the feeding of kitchen waste is deemed to be illegal). Many communes actively encourage the keeping of chickens, and offer incentives to folk with suitable gardens, to get them going. In one part of France potential chicken keepers are given grants, and/or free birds and a free initial supply of grain. You do, however, have to sign an undertaking saying that you will not eat the chickens for two years; a wise move, that ensures **your chicken's egg producing days are not curtailed in favour of a dish of coq au vin.**

Barbara Cummings

www.recycleforbuckinghamshire.co.uk

Celebrations at the Old School, Ivinghoe

Hello there from the Old School,

The realisation of our village hub continues... We held our second ever Annual General Meeting on Wednesday 21st Aug, to great success. All reports and the two minor amendments to the constitution were accepted. Officers were re-elected with Carol Tarrant retaining the role of Chair, John Wallis as Treasurer and Bob Tarrant as Secretary. A further group of villagers were elected as Trustee Committee Members to oversee and drive the development of the hub for all.

Following on from the AGM, the inaugural Trustee Committee Meeting took place on

Ashbys

CHARTERED ACCOUNTANTS

The local accountants providing a personal service.

**Accounts & audits
Business start ups
Company formations
Charities**

**Personal tax advice and planning
Tax returns
Payroll
Book-keeping**

Call for your free initial discussion on 01296 668217

Visit our website and register for your free monthly newsletter

www.ashbys-accountants.co.uk

**Ashby's
Morton House
9 Beacon Court
Pitstone Green Business Park
Pitstone
LU7 9GY**

Wednesday 11th September. Covered on the agenda was the development of an **exciting new set of fundraisers... once the buildings are in a suitable state for use (more on that later)... and ways to ensure all of the community are fully engaged in the use of our own hub.**

Why not register your interest in our **hub... Become a 'Hubber lubber' and find out what's going on and how you can help.**

Pop into the CuriosiTEA café and register **to be on our email mailing list. We'll keep in contact with you to make sure you know what's going on.**

Continued thanks to all who are helping to make the hub ready for our community **either through donating time or money...** You know who you are! Bob & Carol Tarrant, Hayley Wesley and the CuriosiTEA team have sanded and sealed the floors in the two big community spaces. The skirting

has been patched and anything added, or that stays still long enough, continues to get glossed or painted. The IT room is getting there, the kit is housed and in the process of being installed ready for use. The Scouts have initiated a deep cleaning exercise which is greatly appreciated. Anyone wishing to lend a hand please pop into the café, where a list of all outstanding tasks are held. We can then make certain that all items listed are covered off in good time for our planned activities.

The CuriosiTEA team have also been shaking the collecting tin, with donations to date paying for and installing a baby changing table. Thanks again!

Events planned so far...

We're working with you all to define a programme of events that suits all of our

(Continued on page 48)

RICHARD J. HARRIS

DSA APPROVED INSTRUCTOR

Manual or Automatic



**PATIENT AND INDIVIDUALLY STRUCTURED
LESSONS TO SUIT ALL ABILITIES**

Locally Based
Guidance and tuition given for Theory Test
High Pass rate - PASS PLUS
Motorway Tuition - Refresher Courses
Member of the DIA

Mobile 07877 816352

1 Crispin Field, Pitstone, LU7 9BG Tel 01296 661228

PRINTED & EMBROIDERED WORKWEAR - CUSTOMISED FOR YOU

**Buy your
company
workwear in
Pitstone**

**Embroidered
or printed
with your
company
logo & name**



- Polo Shirts
- Fleeces & Jackets
- T-shirts
- Sweatshirts
- Overalls
- Work Trousers
- Hi-viz & PPE
- Shirts & Blouses
- Hard Hats & Boots



**Buy your workwear from a local (Pitstone) firm with 25 years
experience in corporate clothing for company events and
exhibitions, sports teams & clubs.**

Call Marilyn Wilton at Aspect Corporate Clothing on 020 8991 1800

View our online catalogue: www.corporateclothingwear.com

(Continued from page 46)

needs and will share this on our website www.ivinghoeoldschool.com along with details of how to book future events as soon as we can.

The CuriosiTEA community café will be open to support the Bonfire Night on the Lawn, run by Ivinghoe Entertainments, on the 2nd November. Hayley and team will be on hand with tasty treats and drinks adding to what is a fabulous annual event.

In the build up to Christmas we're also looking at hosting a Christmas Market evening on Friday 6th December . This cosy Christmas event will run from 6pm – 10pm, giving everyone the chance to attend, buy some gifts (or treats for yourself!) and soak up the Christmas atmosphere. Stalls are £15 each and forms can be collected from CuriosiTEA Rooms or by emailing hayleywesley79@gmail.com.

Please come along to our events and support our community hub, we look forward to welcoming you at Ivinghoe Old School – make the most of local village facilities. Call 01296 662267, email thecorns@talk21.com, visit www.ivinghoeoldschool.com or pop in to the café and **register to be on our email mailing list as a 'Hubber lubber'**.



Ivinghoe Town Hall

Since the last PPP update, Summer finally arrived and is stretching into early October....!

The Town Hall appreciates users from many of the local Villages, using the Post Office, Shop and Beacon Library which all supports our facilities.

Andy Beezer has been working on our behalf behind to help develop an internet site for the Town Hall. This site will also offer a bookings calendar. The regular bookings are continuing **and some of you will also have enjoyed trying the new 'Ballet for Adults' class at 1pm-2pm on Wednesdays.** If you are interested in any of the regular classes please contact the numbers that follow: Monday: 3pm-6pm Ballet (07834 281434); Tuesday: 10am -Beacon Art (01296 661291) / 7pm Zumba (07941 092673); Wednesday: 10am Pilates (07855 138005) / 1pm Adult Ballet & at 2pm Vintage Fitness (07985 048880); Thursday : W.I – Monthly - each 2nd Thursday (Win 01296 660755). If you would like to have a look around or book the hall for a party, meeting or other event please contact our booking secretary Carole Wesley on 01296-661094

Stephen Swinbank, Secretary - 01296 660344

Amanda Livesey Sports Therapist

BSc (Hons) MSST BASEM

Neuromusculoskeletal Medicine Specialist

- Assessment, treatment and rehabilitation
- Treating the sports person and non-sports person
- Pre and post-op rehabilitation
- Sport specific rehabilitation
- Pain therapy and rehabilitation
- Referrals to GP's and consultants
- Back and neck pain
- Strains and sprains
- Acute and chronic conditions
- Osteoarthritis
- Posture pain

CALL: 07712896095

www.liveseysportstherapist.webeden.co.uk

amanda.livesey@googlemail.com



The Village Swan at Ivinghoe Aston

LU7 9DP - 01525 220544

thevillage.swan@virgin.net

We are pleased to afford you a very warm welcome.
We offer a choice of 3 regularly changing draught beers, a wine menu to suit all tastes and a good choice of home prepared meals.

Fish and Chips

Every Thursday 6pm till 9 pm

Eat in or take-away.

Try our fish of the day in our secret recipe
homemade crispy batter.

Also available: mushy peas, baked beans, scampi
or sausage and chips

Sunday Carvery

Every Sunday noon till 3 pm

A choice of at least 3 meats, 4 freshly
cooked vegetables, home made Yorkshire
pudding and a choice of potatoes.

Childrens portions available
Booking recommended

PRIVATE PARTIES CATERED FOR AT COMPETITIVE RATES



Photo not retouched!

I CRAVE my workout

"Jazzercise keeps me in shape and gives me my MOM energy. I crave Jazzercise because it makes me feel rejuvenated and stress free." - Piper, 35

07900 987230

www.jazzercise-uk.com

www.facebook.com/JazzerciseBucksBedsHerts

Monday	9.30 am	Wilstone Village Hall
	7.00 pm	Cheddington Village Hall
Tuesday	6.00 pm	Low Impact class @ Wilstone Village Hall
Wednesday	9.30 am	Wilstone Village Hall
	7.30 pm	Pitstone Memorial Hall
Thursday	9.45 am	Low Impact class @ Wilstone Village Hall
Friday	9.45 am	Wilstone Village Hall

LOSE WEIGHT

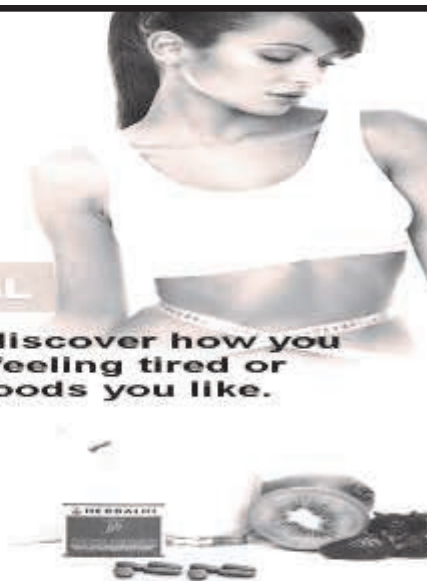
LOOK GREAT AND
FEEL HEALTHY?

Ask about our 3 DAY TRIAL

Take our 3 day trial and discover how you can lose weight without feeling tired or hungry and still eat the foods you like.

A great introduction
to Herbalife's
healthy nutrition

 **HERBALIFE.**
Independent Distributor



For more information or to start your 3 day trial contact Eve Smélie
Text: SAMPLE + YOUR NAME to 07918 026076
Tel: 01296 660330 E: Eve@naturalwellbeing.info

Make a Will

AND LASTING POWERS OF ATTORNEY

Protect Your
Home 100%

YOU DECIDE, who is to run your affairs,
who gets what, guardians etc, **not the State.**

MINIMISE RISK of Inheritance Tax and
the disinheritance of children.

Best Price Guarantee

from specialist Solicitors and
professional Will Writers since 1999

FREE
HOME
VISIT

For a **DAYTIME** or **EVENING** appointment call

01525 220644

www.wisechoicewills.co.uk

from
CARE FEES
and
PROBATE COSTS



**Will Trusts
& Probate
Practice**

A wise choice

MAKING A WILL HAS NEVER BEEN EASIER

Street light out? Call your local Parish Councillor:
Alison Hawkins 01296 668144 or Klaus Ginda 01296
668911

Miramar Design

Building Surveying Services

Design & Drawings for Domestic Extensions, Alterations
and Loft Conversions
Planning and Building Regulations Advice and Submissions
Party Wall Matters
Building Insurance Claims

Professional service provided by experienced Chartered Building Surveyor

For free initial consultation, contact Jo or Andrea Mitchell,

Miramar Design, 8 Short Hale, Pitstone, Bedfordshire LU7 9FF

Tel: 01296 663888 / 07852 278756 email: miramardesign@btinternet.com



Brookmead School

Headteacher: Katherine Douglas

Bringing Learning to Life and Life to Learning

Our school is located in the beautiful Chiltern hills, which is something to be celebrated and shared. Established in 1967, Brookmead School provides a happy and stimulating environment that promotes an enjoyment and love of learning. We aim to enable all our children to reach their full potential, both as learners and as valuable members of our school and wider community.

Brookmead School is a Foundation Primary School for children aged 4 - 11 and serves the communities of Ivinghoe, Pitstone (including Castlemead) and Marsworth.

For further information or to arrange a visit please contact Mrs Kerr on 01296 668543 or email office@brookmead.bucks.sch.uk.

Brookmead School, High Street, Ivinghoe, LU7 9EX
www.brookmead.bucks.sch.uk



Excel Help

Automated processes which means more time for you to concentrate on other parts of your business.

Every day processes completed at the click of a button.

Easy access to your customers details, timelines, targets, finances etc.

From simple pricing and reporting tools to more complicated user interactive spreadsheets.

Whether it be a simple summary of costs, forecasting, calculating profit margins, charts, analysis or setting up databases – give me a call in Pitstone on 01296 660881.

Richard designs new and improves existing databases in Microsoft Excel and is a professional Microsoft trainer.



www.rdsit.co.uk



Microsoft Training



Excel
 Word
 PowerPoint
 Outlook

From absolute beginner to advanced.

If you have never used any of these applications before or;

If you are looking to enhance your existing skills or;

If you want to retrain for a new job or career.

For more information please call Richard in Pitstone on 07714 283701 or 01296 660881



rdsit
 training & consultancy

www.rdsit.co.uk



Pastor Dave Clifford

"I Don't Believe in Accidents"

Tel: 01296 668906 Mob: 07737 360183

Email: davidclifford954@btinternet.com



Pitstone Car Scheme



DO YOU have difficulty travelling to hospital or other healthcare appointments?

CAN WE help?

Pitstone Community Car Scheme is a new scheme offering a service for residents who have difficulty travelling to healthcare appointments.

The scheme is run by volunteers who use their own cars to drive residents to local hospitals or other healthcare appointments (for example, the opticians, dentist or physiotherapist).

There is a small charge for the service to cover the volunteer's petrol and car parking expenses. To make it easier, a set tariff has been worked out in advance for typical journeys to local hospitals. If you need to access healthcare in another town, eg Hemel Hempstead, the cost will be advised at the time of booking the trip.

Example costs (excluding car parking):

DESTINATION	COST £
TRING	£3.00
STOKE MANDEVILLE	£7.00
CHESHAM	£6.50
L & D HOSPITAL	£7.00
AMERSHAM	£8.50
HIGH WYCOMBE	£14.00
JOHN RADCLIFFE	£17.50
NUFFIELD, OXFORD	£17.50

New Tariffs

From 1st Dec. 2012

DRIVERS NEEDED!

In some circumstances, we may be able to undertake hospital trips to the John Radcliffe or Nuffield hospitals. Please contact the number below if you are having difficulty accessing transport to these hospitals.

The volunteer will usually wait while the appointment is taking place, and then take the resident home. However, there may be circumstances where the return trip is much later or another day. In this case, each journey will be classed as return – as the volunteer will need to return to Pitstone using their own vehicle and petrol.

These charges are exceptionally good. The trips are being undertaken by volunteers so, at present, these cannot be extended to include appointments other than healthcare. Also, there is no guarantee of an available volunteer driver, but we will do all we can with the volunteer resources we have. Please give as much notice as you can.

If you have difficulty travelling and would like to use this service to help you get to a hospital or other healthcare appointment, please telephone

Dave Clifford on 01296 668906.

Parache interiors

- Soft furnishings for your whole home or simply one room
- Supplying bespoke curtains, blinds, loose covers, cushions, tracks & poles and lots more
- Complete service including design, fabric samples, measuring, making up and fitting

Sandra Ford

T: 01296 660868

E: sandra@panache-interiors.com

www.panache-interiors.com

F & W Computers Tringhoe

Nigel is offering you
a Reliable, Local
Service for your
Computer needs.

We are:



Close
Fast



Cost effective

Phone: 01296 668988

Mobile: 07880 794668

fandwcomp@vodafoneemail.co.uk

Janes



Janes

*Electrical Appliances, Flat Screen Tv's
Bikes & Accessories, Carpets & Flooring*

Competitive On Price

FREE Delivery & Installation

On Electrical Appliances & TV's

(within a 15mile Radius)

www.janes.co.uk

4-8 High Street, Edlesborough Nr Dunstable, Beds LU6 2HS

Tel: 01525 220208 Fax: 01525 222802

F R JEFFERY **Coal Merchant**

Coal & Smokeless Fuel
Logs & Compost

Spare Parts for
Solid Fuel Appliances

Delivered to your
door at low prices

Contact Rex & Carol

01296  **661258**



T&S **TREECARE**



All trees lopped, pruned
or felled

All hedges shaped,
pruned or removed

We also do turfing, grass
cutting & fencing

All garden rubbish removed

FREE ADVICE & ESTIMATE

LOGS FOR SALE



01296 662167



Heads & Tails

Established 1994

Dog Grooming

Professionally trained @ London Academy of Grooming

Nail Clipping - Hand Stripping - Individual Attention

"I have moved to new premises in Edlesborough where I look forward to greeting my old customers and meeting new ones."

Julie Mahoney

Phone: 01525 229449

Mobile: 07836 240467

Email: headsandtails@hotmail.co.uk

Unit 7B Sparrow Hall Farm Edlesborough LU6 2ES

UNDER ONE ROOF

Michael 
ANTHONY

LET BY

www.michaelanthony.co.uk

Michael 
ANTHONY

SOLD BY

www.michaelanthony.co.uk

**TWO SEPARATE TEAMS SPECIALISING IN
TWO SEPARATE MARKETS.**

**FOR THE BEST ADVICE
WHETHER YOU ARE LETTING OR SELLING**

TELEPHONE : 01442 891177

**FOR A FREE
NO OBLIGATION VALUATION**



Here's a bright idea—leave a light on!

As the clocks go back and the nights draw in, Aylesbury Vale residents are reminded to secure their homes against opportunist burglars.

By following the Community Safety Partnership top tips, you'll be safe as houses this winter:

- Make sure all doors and windows are securely locked and valuables are not left on show.
- Use a timer switch to make your home appear occupied. This is especially important if you are out in the evenings or return home late as a commuter.
- Mark your valuable property such as televisions, mobile phones, games consoles etc with a UV pen (house number and postcode). In the unfortunate event your property is stolen and then recovered; Police can positively identify valuables and give them back to you.
- Be aware of the risks of broadcasting an empty home on social networking sites.
- Secure your garage/shed as well as your home - they contain the tools a burglar requires to get into your home.

For more crime prevention advice and information of where our wintertime road shows are, please visit: www.aylesburyvaledc.gov.uk/community-living/community-safety/

Crime prevention tip of the month- Recently we have seen a small increase in vamoose burglaries in Aylesbury Vale (vehicles stolen by obtaining the keys from the home). Here are 5 top tips to reduce this type of crime:

- Park in a garage if possible.
- **Don't leave keys on show that can be seen through a door or window.** Keys can easily be hooked through letterboxes if left by the front door.
- Secure all windows and doors with a key, especially at night.
- Install automatic motion lights where your vehicles are parked.
- **Don't leave tools or objects in the garden which can be used to force entry into your home and make sure garden gates are locked.**

Embroidered Clothing Workwear and Gifts

Local company - free delivery within 5-mile radius

Please call or email to
discuss your requirements

Phone: 01296 662984



Wentworth

Email: sue@cmcgolf.net

For schools, clubs, businesses and individuals

CMC GOLF EUROPE LTD

UNIT 8, WILLIAMS COURT, TUNNEL WAY
PITSTONE, LUT7 9GJ



Handyman Dave

Work undertaken from 2-3 hours
or as long as needed

Anything from repairing
kitchen doors or drawers,
dripping taps, hanging doors,
shelves, flat packs,
play equipment, small shed
etc, etc....

Please phone 01296 668025

BARRY CATO MOTOR REPAIRS



24 hr Breakdown & Recovery

WORKSHOP AT:
R/O Norfolk House Farm, Harling
Road,

Eaton Bray, Dunstable, Beds

TELEPHONE:

Workshop: 01525 221681

Evenings: 01525 220870

Mobile: 07836 650 015

Vision Hair Design

Welcome New Stylist Pamela now available for bookings.

"I look forward to welcoming clients old and newespecially you" Pam Blackborough

To find out more about late nights, special offers, consultations or to make an appointment contact

Pamela

Mobile: 07921 102843

Email: Pamelablackborough@rocketmail.com

Vision Hair Design, 19 High Street Ivinghoe, LU7 9EP



BiO SculpturE GeL

- + Looks as thin and natural as your own nails only better
- + Healthier nail treatment that is a pleasure to use and wear
- + One component nail treatment that strengthens and promotes the growth of natural nails
- + Applied onto the prepared nail with no time consuming build up process
- + Self levelling application eliminates excessive buffing
- + Cured under a UVA Lamp in just 2 minutes

Contact: Jane @ Vision Nails 07896 974279

Vision Price List *Nails*

Full set overlay French/Colour.... £25 Full set refills £20
 Repair (per nail) £4 Full set soak off only £7
 Toes full overlay French/Colour.... £25

Vision Hair Design, 19 High Street Ivinghoe, LU7 9EP

Footworks

Bring the clinic to your home

Corns - Ingrowing Toenails

- Verrucae - Nail Cutting

- Athlete's Foot - etc

Caroline Royce
MCFHP MAFHP

Phone: 01296 485575

Mobile: 07904 377262

Evening appointments available



LIAM HIGBY
SPECIALIST IN VOLKSWAGEN,
AUDI, SEAT AND SKODA

SERVICE AND MAINTENANCE
TO ALL
MAKES AND MODELS

07786376985

LCH MOTOR SERVICES
lchmotorservices@btinternet.com

Memorial Hall Social Club

Offer For Hire

Party tent 4mtrs x 8 mtrs£100
(We will erect and take down)

Extra Large Igloo Cool Box ...£20
(Ht 45.2cm W 89.2cm Dp 42.5cm)

Large Cool Box£15

***Interested parties
please phone***

Barry: 01296 661609

Painting & Decorating

Brighten up your Home with a Professional Decorating Service
Clean & Tidy Workmanship Guaranteed

- . Interior & Exterior
- . Wallpaper Hanging including Feature Walls
- . Skirting, Architraves, Door Hanging ect
- . Plaster Coving & Cornices
- . Painting/Staining
- . Wall Tiling
- . Insurance Work Undertaken
- . Competitive Pricing



To discuss your ideas & arrange a free quote call:

Adrian Bystra Phone: 01296 688429 - Mobile 07986 597013

www.ambdecorate.com

email: bystra@btinternet.com



Ridgeways

Chartered Financial Planners

Impartial advice on Pensions & Investments

67 Buckingham Street
Aylesbury HP20 2NF
Telephone: 01296 482423
www.ridgewaysfp.co.uk

Ridgeways (FP) Limited is authorised
and regulated by the
Financial Services Authority

Beacon Villages Society

Annual General Meeting

Pitstone Memorial Hall Meeting Room

Wednesday 20th November

8pm

Refreshments

All villagers welcome



Is your money working hard enough for you?

- Your savings** – are your investments performing as you expected? Why not try our **ISA Review service**?
- Your insurance** – is your life, critical illness or other insurance value for money? Why not try our **Premium Comparison service**?
- Your retirement** – are your pension plans on-track or are you are retiring soon? Why not use our **Annuity Search service**?
- Your mortgage** – are you on the most competitive deal? Why not try our **Mortgage Search service**?

Why not contact Paul Pearce, a Chartered Financial Planner,
for a no obligation initial conversation?

Email: paul@finpru.com

Telephone: **01525 220 480**

Financially Prudent (IFA) Ltd,
23 The Green, Edlesborough, LU6 2JF

Financially Prudent (IFA) Ltd is authorised and regulated by the Financial Services Authority



BeaconView

Windows, Doors & Conservatories



Supplied and installed by a family-run business, based in Ivinghoe

For a free, no obligation quotation, please call William on:

01296 690777

We also offer repair and maintenance services:

- Replacement fascia, soffits and guttering
- Conservatory Roof Leaks
- Condensation Problems
- Faulty Hinges, Handles and Locks



www.beaconviewwindows.co.uk



ROO'S

BUILDING & PROPERTY MAINTENANCE SERVICES

All your building and DIY requirements catered for, including:

- *Bathroom Installations*
 - *Brickwork*
 - *Decking*
 - *Driveways*
- *Extensions/Conversions*
 - *Electrics*
 - *Fencing*
- *Kitchen Installations*
- *Laminate & Wooden Flooring*
- *Office Partitioning/Stud Walls*
 - *Painting & Decorating*
 - *Patios*
 - *Plumbing*
- *Suspended Ceilings*
 - *Tiling*

Please call for other jobs not listed

Visit our website www.roorescue.co.uk

Contact Richard

Mobile **07772 531576**

Office **01296 662026**

e-mail richard@roorescue.co.uk



Cheddington Pre-School

Cheddington Pre-School is registered with Ofsted and affiliated to the Pre School Learning Alliance. We operate from purpose built premises, which include our own designated secure outside play area within the grounds of Cheddington Combined School, providing early years care and education for children aged 2 ½ to 5 years.

We deliver the Early Years Foundation Stage curriculum as set out by the Department for Education and Skills, where the emphasis is on learning through play in a safe, welcoming and supportive environment for all children.

For further information, please contact the Manager Michelle Andrews on 01296 662292, email admissions@cheddingtonpreschool.co.uk or visit: www.cheddingtonpreschool.co.uk

Marsworth Pre School



Marsworth Millennium Hall, Vicarage Road, Marsworth HP23 4LR
Tel: 07506 179658 Email: enquiries@marsworthpreschool.org.uk

Marsworth Pre-School, held at Marsworth Millennium Hall, is a very popular village pre-school with an outstanding reputation, attracting children from a wide area.

Sessions available for ages 2 to 5 years,
FULL or PART days:-

Monday, Wednesday, Thursday & Friday
Morning Session:- 9.00am - 11.30am
Lunch Club:- 11.30am - 12.30pm
Afternoon Session:- 12.30pm - 3.00pm

For further information, details of funding, session availability or to arrange a visit, please call 07506 179658 or visit our website www.marsworthpreschool.org.uk



New to the area with young children at home? Recently had a



baby and want to meet other parents in the village?

**Why not come along to Pitstone Memorial Hall on Wednesdays
(during term time) from 1.15 pm to 3pm.**

**You can be sure of a warm welcome and a cup of coffee, and for
the little ones we offer a variety of activities**

Music Sessions, arts and crafts, toys and games, story time

No need to book, just turn up on the day

For more information please visit

www.pitstoneandivinghoetoddlers.btck.co.uk

Facebook: Pitstone and Ivinghoe baby and toddler group

Superior standard painting and decorating
Established & trusted locally for over 20 years

MARTIN J KEABLE

Call 01296 660354 or 07855 154717
martinj.keable@virgin.net



BEFORE



& AFTER



MISTY DOUBLE GLAZING ?

KEEP YOUR WINDOW FRAMES....

....WE JUST REPLACE THE GLASS!

- UPVC • Aluminium • Or Wood

Because we replace just the glass the repair is a

FRACTION OF THE COST

of a complete replacement window.

mistydoublinglazing.co.uk

01525 876808

QUALITY GLAZING SERVICES

We also replace Broken...


- Glass • Handles • Hinges
& Locks

**and Repair... Patio Doors &
Conservatories!**

**UPVC
frame
cleaning
service
available**



The views expressed in the PPP do not necessarily represent the views of the Parish Council or those of the Editor.



Onestop Glazing Services



In the double glazing industry since 1986. We have the knowledge and experience of dealing with all aspects of double glazed conservatories, windows and doors, be it upvc, timber or aluminium.

The company is a member of Fairtrades and we can also offer an insurance backed guarantee for all new installations.



 01296 661746
  07946 500631
  www.onestopglazing.co.uk

Premier

MASON'S

Store

A great deal more from your local store

Snacks
Cigarettes
News & Mags
Fruit & Veg
Confectionery

Opening Hours

Weekday
 06.30 - 20.00

Saturday
 07.30 - 20.00

Sunday
 08.00 - 17.00

Frozen Foods
Off Licence
Lotto
E Top-Up
Pay Point

Phone: 01296 660052

Marsworth Road, Pitstone, LU7 9AF

 <p>Chairman, Cllr Robert Saintey 2 Albion Road, LU7 9AY T: 668633 E: sainteypitstone@btinternet.com Chairman of the Council, Chairman of the Planning Committee, Chairman of the Pavilion Committee, Chairman of the Staffing Committee, Rep. on the Memorial Hall Committee, the Pitstone Development Area Working Party, Local Area Forum, Neighbourhood Planning</p>	 <p>Vice Chairman, Cllr Ben Blunt The Laurels, Old Farm, LU7 9RD T: 660702 E: ben@strategyhr.co.uk Vice Chairman of the Council, Pitstone Development Area Working Party, Planning Committee, Pavilion Committee, Staffing Committee, Waste/Minerals, Brookmead Governor, interim PPP Editor, Local Area Forums, Leader of Recreation Ground/Leisure and Skate Park Projects, Neighbourhood Planning</p>
 <p>Cllr Gillian Arney 63 Cheddington Road, LU7 9AQ T: 668123 E: gill.arney@tiscali.co.uk Pitstone Hill and Trees, Parish Paths, Pitstone Church Committee, Aylesbury Vale Transport Users Group, Recreation Ground & Playground Inspections, Notice Board Manager.</p>	 <p>Cllr Annie Stack 73 Old Farm, LU7 9RD T: 668020 E: stackja@btinternet.com Pitstone Hill and Trees, Allotment Rep. Rep. with the Chiltern Society, Chiltern Conservation Board & other ecological issues, Pitstone Church Committee, Local Area Forums</p>
 <p>Cllr Brian Richardson 55 Rushendon Furlong, LU7 9QX T: 662227 E: Bvrichardson@hotmail.com Representative on the Planning Committee, Representative on Pitstone Windmill Committee, Beacon Villages Society, Recreation Ground & Playground Inspections.</p>	 <p>Cllr Alison Hawkins 27 Rushendon Furlong, LU7 9QX T: 668144 E: Alisonhawkins22@hotmail.com Rep. on the Pitstone Development Area Working Party, the Planning Committee, the Pitstone Windmill Committee, Street Lighting, Recreation Ground & Playground Inspections, Neighbourhood Planning</p>
 <p>Cllr Dave Nicholls 64 Marsworth Road, LU7 9AS T: 661910 E: Dave@dnjsolutions.co.uk Representative on the Pitstone Development Area Working Party, Representative on the Planning Committee, village website.</p>	 <p>Cllr Steve Matthey Fern Cottage, 13 Queen Street, LU7 9AU T: 662691, E: Steve.matthey@treelondon.com Allotments, Youth Cafe, Recreation Ground & Playground Inspections</p>
 <p>Cllr Klaus Ginda 7 Chequers Close, LU7 9AF, T: 668911 E: Klausginda@btinternet.com Rep. on the Pitstone Development Area Working Party, the Pavilion Committee, Street Lighting, Leisure and Skate Park Project, PPP Advertising, VAHT, Police Issues</p>	 <p>Cllr Mary Ann Monaghan 103 Windsor Road, LU7 9GG T: 662412, E: mamonaghan59@aol.com PPC Communications, Castlemead Representative</p>
 <p>District and County Councillor: Avril Davies The Old Bakehouse, Chequers Lane T: 668152 E: acdavies@buckscc.gov.uk Lib Dem Group Leader Bucks CC, Lib Dem Spokesperson for Strategic Planning on AVDC; Adult Services on BCC. Special interests: environment and NHS</p>	 <p>Correspondence/Enquiries, the Clerk: Laurie Eagling, 9 Warwick Road, LU7 9FE T: 660791 E: parishclerk@pitstone.co.uk Clerk to Parish Council, Responsible Financial Officer for the Parish Council, all correspondence and enquiries</p>