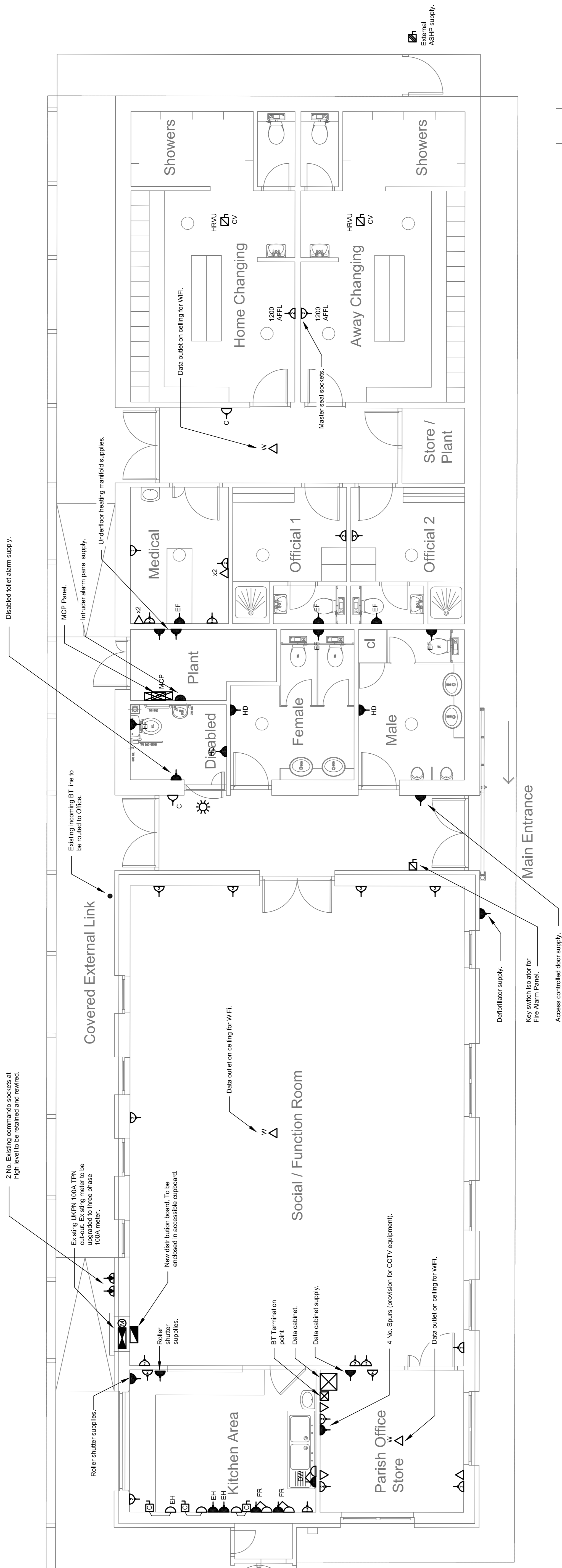


GENERAL NOTES

1. This drawing must not be scaled, refer to Architects dimensioned drawings.
2. All dimensions are in mm unless otherwise indicated. Verify all dimensions before construction.
3. This drawing is to be read in conjunction with all mechanical and electrical drawings and the engineering specification and schedules for this contract.
4. This drawing shall be read in conjunction with the Architects and Structural Engineers drawings.
5. For Legend refer to Drawing No. 1942/E100



SMALL POWER DRAWING NOTES

1. All electrical services to be installed in accordance with BS7671.
2. For setting out of all accessories refer to Architects elevations and details.
3. Main and supplementary bonding to be provided in accordance with BS7671.
4. All final circuit cabling is to be Low Smoke Zero Halogen.
5. The Contractor shall provide all necessary power for all ELV systems that may be required by the equipment.
6. Power supplies for mechanical equipment subject to detailed design.
7. Refer to external services drawings for external power requirements.
8. All ratings and locations of power supplies in kitchens are to be verified by Kitchen specialist.
9. All outlets are to be recessed, surface metallic outlets to be provided in plant areas only.

Rev	Date	First Issue	AC/MDG
P1	11.11.19	Drawn	



Unit 2, Avenue Business Park,
Brookley Road, Elsworth,
Cambridge, CB23 4EY
T: 01954 267588
E: conrad@bceeng.co.uk
www.bceeng.co.uk

Project:
**Pitstone Sports Pavilion
Marsworth Road, Pitstone LU7 9AP.
Extension and Refurbishment**

Title:
Small Power and Ancillaries Layout

Status:

Preliminary Issue

Scale: 1:50 @A1
Drawn: DLG/ACM
Checked: SRB
Date: November 2019

Drawing Number:
1942/E102

Bannerman Consulting Engineers Ltd.

THIS DRAWING REPRESENTS THE DESIGN INTENT AND AS SUCH DOES NOT REPRESENT A COMPLETE DETAILED DESIGN. THE CONTRACTOR IS TO ENSURE THEY INCLUDE ALLOWANCE IN THEIR TENDER FOR ALL FURTHER PLANT AND EQUIPMENT NECESSARY FOR A COMPLETE WORKING INSTALLATION TO FULFIL THE REQUIREMENTS OF THE EMPLOYERS REQUIREMENTS.

