



# Pitstone Guide 2022

# CONTENTS

	Page
Welcome to the Pitstone Guide.....	3
Pitstone's History.....	4
Pitstone Today.....	5
Places of Interest to Visit.....	6-11
Churches and Church Services.....	12-15
Activity Venues.....	16-19
Eating and Drinking.....	20-23
Charities Benefitting Parishioners.....	24-26
Help with Transport.....	27
Biographies of Famous Pitstone Residents.....	28-29, 32-33
Village Map.....	30-31
A-Z of Sports, Activities and Clubs.....	34-44
Local Walks.....	45-49
Easy Cycle Routes.....	50-51
Volunteering Opportunities.....	52-53
General Information.....	54-57
Pitstone Parish Council Services and Key Projects.....	58
Your Local Council.....	59

**Published March 2021**

# WELCOME TO THE PITSTONE GUIDE

Welcome to the Pitstone Guide. The parish council is very proud of our rural parish, set within some of the most beautiful countryside in England and we hope you are too. We have a dynamic and growing community of approximately 3,000 residents, with lots for everyone to get involved in and plenty of opportunities for you to broaden your skills or volunteer some time.

Inside this guide, you will find details of all the local venues, clubs and associations - you will probably be surprised at the extent of activities available within our community, or just a short distance away. There are also local walks and cycle rides that will let you take in some of the breath-taking views. The parish and the surrounding area is steeped in fascinating history and there are plenty of opportunities for you to experience this. More details about our origins can be found overleaf.

We hope that the information will be particularly helpful to those joining our community but also as a handy guide for everyone to keep, full of useful contact information.

The first parish council in Pitstone was established at the end of 1894 and consisted of just five seats. Today our council is comprised of ten elected members of the village, who give their time voluntarily because they are passionate about Pitstone and enhancing the lives of those who live within it. We are there to represent you, and drive forward the initiatives that you identify as being important to our community. We welcome all your views and encourage you to attend our meetings or become involved in our committees, working parties and community groups. You are welcome to contact any member of the parish council, or our clerk, about local issues, and you will find all our contact details at the back of this guide. This is an exciting time for the community, and the parish council, as we strive to ensure the delivery of new leisure facilities and work with landowners about future development. It is important that the village develops in the way that you wish and we thank all of you that have taken the time to complete our surveys and attend our consultations. The future of your village is in the making.

**Councillor Bob Saintey, Pitstone Parish Council**

Distance in Miles:		
Tring – 3.5	Berkhamsted – 7.5	Aylesbury – 9.5
Dunstable – 7	Leighton Buzzard – 8	Hemel Hempstead – 11.5

# PITSTONE'S HISTORY

In ancient times, herds of red deer, giant deer and oxen roamed the area. Their fossilised bones were found during excavation for cement production at Quarry 3, which is now College Lake, along with hippopotamus, rhinoceros and mammoth bones.

Evidence of a settlement in Pitstone (formerly Pightlesthorn) dates back to as early as the 6<sup>th</sup> Century. There have been findings of Iron Age and Roman material, indicating this area was extensively inhabited. Several ancient track ways linking the Chilterns to the Vale have been found. In addition several moated sites and Scheduled Ancient Monuments have also been identified.

The village name is Anglo Saxon in origin, and means 'Picel's thorn tree'. It was recorded in the Domesday Book of 1086 as Pincelestorne. Pitstone was given to the abbey at Ashridge by the Earl of Cornwall in 1283. In 1290 King Edward I (right) spent Christmas in Pitstone at the estate that had been given to the abbey. He stayed for five weeks, during which time he held parliament in Ashridge. His stay caused great inconvenience to the local inhabitants of the village, who were legally obliged to keep the king and his court.



Pitstone was originally a farming community, including Pitstone Green Farm which is now our museum. This farm was once an important employer within the village. Farming included seasonal fruit picking such as the local plum, often known as the Aylesbury Prune, which was very popular up until the Second World War. Cereals were the most important crops (hence the windmill and old watermill and bakery located in The Mill House and Brook End Mill on the Whistlebrook and parish boundary). Although thousands of Aylesbury Ducks were fattened each year for the London market, the most important livestock was sheep. In 1866, there were 534 sheep on Pitstone Green Farm. Pitstone was also an important supplier of straw plait to the thriving hat industry in Luton, and plait schools existed in cottages where children as young as 4 were sent to learn to plait.

In the 1930's Pitstone cement works opened, which was run by The Tunnel Portland Cement Co Ltd and operated until 1991. During this time village life was dominated by the cement works, which gave work to local people. However there was a constant battle with dust and other negative environmental impacts. The site has now been demolished and has been redeveloped for housing and business use. The new housing district is named 'Castlemead' (after the Castle Cement Company who were the last operators of the site) and the business area contains numerous units, offering new opportunities for local employment.

A comprehensive illustrated history of Pitstone can be found in "Pitstone 2000". If you don't have a copy of this book, please contact the parish clerk who will be happy to supply one free-of-charge.

# PITSTONE TODAY

Only a few of the buildings built before 1800 still exist. These include Sparrow Thatch and Robin Cottage in Chequers Lane, Moat Farm in Vicarage Road, Whitefriars in Old Farm, Cocksparrow Cottage on Marsworth Road and 4 thatched cottages at The Green.

Over the years, many housing developments have been created, including the Castlemead estate and most recently in Vicarage Road & Rushendon Furlong. The Nicholas King development along Marsworth road is now well underway. Please refer to the Pitstone Neighbourhood Plan via our website [www.pitstone.co.uk/ndpnews/pitstones-neighbourhood-plan-is-now-in-place](http://www.pitstone.co.uk/ndpnews/pitstones-neighbourhood-plan-is-now-in-place) for more details about planning developments & restrictions in the parish.

We are lucky enough to live in a village where our landscape is characterised by gently undulating hills lying before the Chiltern foothills. The area is crossed by numerous streams and brooks fed by local springs. The Grand Union Canal wraps around the west and north, and you can still see extensive arable farming. In the wetter areas you will find willow trees and on the higher ground, plenty of oak and ash.

The village benefits from several employment opportunities with the introduction of the business park and several well established firms such as Safran Power UK and Colbree Engineering. Pitstone also has excellent education provision for 2-12 year olds, with Windmill Pre-School and Brookmead Primary School awarded “good” status by OFSTED in 2019.

The early census in 1801 recorded just 275 residents. Our last census in 2011 showed that Pitstone has grown to almost 3,000 residents, one third of which are under 18 years, so we have a large young population to cater for. Our population has grown steeply over the last 10 years and although this may slow, we can expect further growth over the next 20 years.

Housing development in the parish has already funded (or part funded) many community benefits such as the extension to the Memorial Hall, cycle paths, the sports pavilion and football pitches, children’s play equipment, the provision of open space and the allotments. All your feedback at various consultation events has helped to shape the development plans for further recreational facilities.



The new Huck Teck Play Space on the recreation ground is now open, the redevelopment of Pitstone Pavilion is complete, and the development of the multi use games area (MUGA), including a skate park and multi-use ball games court on the recreation ground, is now underway. So this is a very exciting time for our parish, as our future begins to unfold.

# PLACES OF INTEREST TO VISIT - PITSTONE

## The Heritage Park at Pitstone Green Museum, Pitstone

(map ref 2)



Located in Vicarage Road, opposite the Memorial Hall. The Collection is housed in farm buildings, many of which have remained unaltered since the farm was built. Indeed many of the implements and machinery exhibited are those that were used during the working lifetime of this farm. The farm, was largely built by the Countess of Bridgewater and is unusual in that it has been occupied by the Hawkins family since 1808.

It was built on the site of earlier farms and some of the old buildings survive to this day. Most prominent of these is the Big Barn, a section of which dates from the 17th century. The museum also contains many items and photographs of people and places that are part of the history of Pitstone, Ivinghoe and the surrounding villages.

The museum is run by the Pitstone & Ivinghoe Museum Society and is open to the public on the second Sunday of the month from June to September and all Bank Holiday Mondays. There is ample free parking and refreshments are available.

On open days attractions include the Museum shop, a model railway, craft stalls, craft demonstrations, Vintage Wireless Room, saw mills, two stone mills and many rooms depicting trades and crafts from the local area.

**For further details:** please contact the museum manager, Peter Farrar on 07944 357715 [manager@pitstonemuseum.co.uk](mailto:manager@pitstonemuseum.co.uk) or visit [www.pitstonemuseum.co.uk](http://www.pitstonemuseum.co.uk)

### What happens at this venue?

Date	Details
2 <sup>nd</sup> Sunday of the month from June to October plus all Bank Holiday Mondays	Open Days
4 <sup>th</sup> Thursday of every month	Pitstone and Ivinghoe Museum Society Talks and social events. Everyone welcome.

# PLACES OF INTEREST TO VISIT - PITSTONE

## Pitstone Windmill, Pitstone (map ref 5)



This is one of the most imposing and important features in Pitstone. It is one of the oldest surviving post mills in the country and the whole top timber part of the windmill could turn, so the sails could face the wind. The date 1627 is carved on its framework. An 1824 map shows a road running from the present windmill car park, passing the mill, to Vicarage Road in Pitstone. In 1874, Earl Brownlow of Ashridge, bought the mill and leased it to the Hawkins family of Pitstone Green Farm.

In 1902, a violent storm caused sufficient damage to stop any further milling and make the mill uneconomic to repair. With the break-up of the Ashridge estate in the 1920's, the mill passed to the ownership of the Hawkins family in 1924. By 1937, vandalism and bad weather had necessitated heavy expenditure merely to safeguard the fabric, so the windmill was offered to the National Trust. The Trust immediately carried out a first aid operation but little further happened until the Pitstone Windmill Restoration Committee was formed in 1963. It launched an appeal for funds for material (Labour was given voluntarily) and in 1970 the committee successfully completed the restoration work to gain a "Countryside in 1970" award.

A team of volunteers now open the windmill to the public every Sunday afternoon during June, July and August. The car park can be accessed on the B488 Upper Icknield Way and there are a variety of footpaths that lead to the windmill from the village.

**For further details:** please email [pitstonemill@nationaltrust.org.uk](mailto:pitstonemill@nationaltrust.org.uk) or telephone 01442 851227.



# PLACES OF INTEREST TO VISIT - IVINGHOE

## Ford End Watermill, Ivinghoe (map ref 6)

This lovely little watermill has records that date back to 1616 but is certainly very much older and was in use up until 1963.



Restored by volunteers and maintained and run by Ford End Watermill Society, it is the only remaining working watermill in Buckinghamshire with original machinery. It retains all the atmosphere of a small farm mill of the late 1800's.

An unusual feature is a sheep-wash in the stream below the mill,

washing made the fleece easier to shear and increased it's value.

Stone-ground wholemeal flour is on sale during milling demonstrations.

Schools and other parties are very welcome. To make an appointment please telephone Mrs Jill Graves on 01296 660074.

The watermill is open on certain Sundays and Bank Holidays between Easter and the end of September and can be found approx. 600 metres from Ivinghoe Church along Station Road (the B488 towards Leighton Buzzard). Ample free parking.

**For further details:** please call the Mill Manager, Chris Tugby on 01442 825421 or email [millman@fordendwatermill.co.uk](mailto:millman@fordendwatermill.co.uk) or visit their web site to check opening times at [www.fordendwatermill.co.uk](http://www.fordendwatermill.co.uk)

### What happens at this venue?

Date	Details
Certain Sundays from Easter to September & Bank Holidays	Open Day and Milling Demonstrations



# PLACES OF INTEREST TO VISIT - NEARBY

## Bridgewater Monument & Visitor Centre, Ashridge



The monument sits on top of the Chilterns Plateau and is a great focal point for discovering the Ashridge Estate. The monument was built in 1832 to commemorate the 3<sup>rd</sup> Duke of Bridgewater, a pioneer of 19<sup>th</sup> century canal building.

Set within 2,000 hectares of atmospheric mature woodland with lots of way marked trails to explore. There is a programme of walks and activity days. There is a visitor centre, shop, cafe and car parking. Climb the hill from Aldbury & turn left onto the B4506 towards Ringshall. The centre is on your left.

The Visitor Centre is open mid February to mid December 10am-5pm or dusk if earlier.

The cafe is open all year (except 25 & 26 December) 8am-4pm (8am-6pm April to October).

The Bridgewater Monument is open weekends and Bank Holidays April to October 2-4.30pm (weather permitting).



**For further details:** please email [Ashridge@nationaltrust.org.uk](mailto:Ashridge@nationaltrust.org.uk) or telephone 01442 851227 or visit the web site: <https://www.nationaltrust.org.uk/ashridge-estate>

# PLACES OF INTEREST TO VISIT NEARBY

## Grove Farm Pick Your Own, Great Gap (map ref 7)



The pick your own started in 1981 and now covers 80 acres with a wide choice of over 30 different fruits and vegetables.

A great day out for all the family. Refreshments available.

Open from 10am to 5pm Monday to Saturday, 9am to 12 noon Sunday from June to October.

Follow Station Road (B488) past the Kings Head and Ivinghoe Lawn down towards Cheddington. Grove Farm is on the right hand side once you reach Great Gap.

**For further details:** please call 01296 668175. You can also find full details of what is in season on the web site: [www.grovefarmpyo.co.uk](http://www.grovefarmpyo.co.uk)

## College Lake Nature Reserve, Bulbourne (map ref 8)

Once a chalk quarry, College Lake has been restored over 20 years and is now a flag ship site with a marshland, lakes, chalk and rough grassland and woodland plus a lovely visitor centre and cafe.



A great day out for all the family. Full programme of special activity days for adults and children. Picnic areas available.

Open every day 9.30-5.00 during the summer and 9.00-4.00 during the winter.

Turn right out of the Westfield Road roundabout onto the B488 to Bulbourne & Tring. College Lake is on the right hand side past the railway

bridge. Ample parking.

**For further details:** please call 01442 826774, email: [collegelake@bbowt.org.uk](mailto:collegelake@bbowt.org.uk) or visit [www.bbowt.org.uk/college-lake/about-college-lake](http://www.bbowt.org.uk/college-lake/about-college-lake)

# PLACES OF INTEREST TO VISIT NEARBY

## You might also like to visit:

Venue	Details
Mead Open Farm	Stanbridge Road, Billington Tel: 01525 852954
Walter Rothschild Zoological Museum	Akeman Street, Tring Tel: 020 7942 6171
Tring Local History Museum	The Market Place, Brook Street, Tring Tel: 01442 827601
Dunstable Downs & Chilterns Gateway Visitor Centre	Whipsnade Road, Dunstable Tel: 01582 500920
ZSL Whipsnade Zoo	Bison Hill, Dunstable Tel: 01582 872171
Whipsnade Tree Cathedral	Whipsnade, Dunstable Tel: 01582 872406
Berkhamsted Castle	Next to the railway station, Berkhamsted Tel: 0370 333 1181
Aldbury Nowers Nature Reserve	Operated by the Herts & Middlesex Wildlife Trust. Particularly beautiful between April and August. Parking available on Westfield Road. Tel: 01727 858901

# CHURCHES AND CHURCH SERVICES

## St Mary’s Church, Pitstone (map ref 9)



Newcomers to the villages of Ivinghoe and Pitstone may not be aware of this gem standing out between Pitstone's Vicarage Road and the new Castlemead development.

When the two parochial parishes were combined in 1974 its historical significance was appreciated and its

future secured by being vested in the Churches Conservation Trust, with a local committee to look after the day to day administration.

The earliest parts of the church, the chancel and north chapel, date back to 1250 and some carved fragments of stone from the 12<sup>th</sup> century indicate that it may have been built on the site of an earlier church. You should particularly look out for the Norman font, the unique brass (probably depicting Lady Neyrnut) and the ancient wooden chest and sanctuary chair. Notice the Medieval floor tiles and the wall painting, dating from the early seventeenth century.

Limited car parking in Church Road, Pitstone.

**For further details:** please contact Jean Booth on [jean.g.booth@btinternet.com](mailto:jean.g.booth@btinternet.com)

### What happens at this venue?

Date	Details
Sunday afternoons from May to September & Bank Holidays	Open Afternoon
Late May Bank Holiday Weekend	Annual Festival of Art and Craft

# CHURCHES AND CHURCH SERVICES

## St Mary the Virgin Church, Ivinghoe (map ref 10)



For 800 years there has been a church in Ivinghoe.

A church existed on its present site from 1220, but in 1234 the village was set on fire as an act of spite against the local bishop, and the church was rebuilt.

Henry III rewarded Peter de Chaceport with the living of Ivinghoe in 1241 and it is he who is honoured as the builder of the church. The effigy of a Norman in priestly robes once described as the 'best bit of sharpening stone in Buckinghamshire' and now in the chancel is considered to be of Peter, placed there by the Bonhommes of Ashridge. In the chancel there are several brasses to remind us of the sheep farmers of the district. Part of one tomb lies beneath the west wall indicating the shortening of the church by a few feet. In their time the walls of the nave were raised for the insertion of a clerestorey. Parts of the original rose windows can be seen in the walls today. The nave arches show evidence of the rood screen (which once

divided the church and it can be seen that the door leading to it from the tower stair has been filled in.) Queen Elizabeth I had its images removed and in her time pews were provided. Their ends are there today, the Ivinghoe 'poppy heads' with carvings of witches, knights and the well known mermaid.

The church is open daily for private prayer and for visitors to look around. A guide book is available for purchase in the church.

## Regular activities at St. Mary's Church, Ivinghoe

You can contact the vicar for Ivinghoe and Pitstone at the vicarage (01296 668260) or Sandra Green who is the Lay Minister (01296 668648).

Information is also available on the church website: <https://ivinghoe-church.org/>

And on Facebook: <https://www.facebook.com/stmary.holycross.allsaints/>

# CHURCHES AND CHURCH SERVICES

## **Bible Study Groups**

Evening study on 2nd and 4th Mondays of each month at 8pm at 1 Queen Street, Pitstone. Contact Jane Grimmette 01296 660972. Daytime study on 1st and 3rd Thursdays of the month at 5 Windmill Close, Ivinghoe at 10am. Contact Betty Swabey 01296 668617.

## **Tots' Praise**

Meets in the children's corner at St. Mary's Church on alternate Fridays during term time at 10am for songs, stories, worship and crafts. We are a very friendly bunch and our meetings are open to all mums, dads, grandparents, and carers. Contact: Sandra Green 01296 668648.

## **Church Choir, Beacon Community Choir and Music Group**

Church choir practice every Thursday at 7pm and Beacon Community Choir practice every Thursday at 8.15pm, both at St Mary's Ivinghoe. The church choir sing regularly for services and special occasions such as weddings and welcome singers of all ages. The Community Choir sing at a variety of local community events. If you are interested in either choir, please contact Judith Sheridan on 07771 570314. If you are interested in joining the Music Group which plays at the Worshipping Together service on the first Sunday of each month please contact Jeanette Lowrie 01296 660194.

## **Youth Group**

Meets on various dates for fun, friendship, activities and BBQ's. Contact Jane Grimmette 01296 660972.

## **Bell Ringing**

Practice is held on Tuesday evenings in St Mary's church bell-tower. Individuals of all ages and experience, or none at all, are very welcome to come and join in as we practice in readiness for services and weddings under the expert guidance of our tower captain. Contact: Corral McCormack 01296 662560.

## **Food Bank**

If you need a food parcel please contact Babs Byrom 07860 780127 and she will arrange for it to be delivered to you. If anybody wishes to donate food, please take it to Pitstone Pavilion Fridays between 10:30 and 12:00.



# CHURCHES AND CHURCH SERVICES

## **Normal service pattern for St Mary's Ivinghoe**

- 1<sup>st</sup> Sunday of the month 10am Worshipping Together (informal service with music group)
- 2<sup>nd</sup> Sunday of the month 9.15am Holy Communion with choir
- 3<sup>rd</sup> Sunday of the month 9.15am Morning Praise
- 4<sup>th</sup> Sunday of the month 10am Holy Communion with choir
- 5<sup>th</sup> Sunday of the month 10.30am Holy Communion held at either Slapton or Marsworth churches.

Each Wednesday morning 9.15am Holy Communion (a short said communion).

## **Regular activities for I&PC 'The Chapel Fellowship'**

### **Morning Worship**

Friendly, informal atmosphere for worship every third Sunday 10.30am at 12 Church Road, Pitstone. LU7 9HA. Refreshments available.

### **First Thursday Social**

Getting together for a film (with subtitles, 2pm start), a chat and a cup of tea, every first Thursday in the month in the Millennium Room, Pitstone Memorial Hall.

Please contact Margaret on 01296 668005 or Halbo on 01296 709104 or [pastorpitstonechapel@gmail](mailto:pastorpitstonechapel@gmail.com)



# ACTIVITY VENUES

## Pitstone Memorial Hall, Pitstone (map ref 1)



Originally built in 1974 and significantly improved and extended since, the Memorial Hall in Vicarage Road is the ideal place to hold your clubs, parties and functions. The hall, which is situated next to the large recreation ground also has changing rooms for sporting activities. There is plentiful free car parking and good disabled access to the facilities. Wi-fi available throughout. For your safety and security there is a new fire alarm system throughout the building and CCTV

coverage. The hall is run by a voluntary management committee.

**Main Hall:** A large hall, which will hold up to 120 people seated, or 150 for dancing. It features a large stage, down lighting and sound system, new windows and doors & is newly decorated. Bar facilities are available on request.

**Millennium Room:** Ideal for the smaller function and complete with its own kitchen and toilets. This room will comfortably seat up to 60 people.

**Meeting Room:** A carpeted meeting room with dry wipe boards and seating for approximately 60 people.

**Social Room with bar:** Completely renovated, decorated and updated. Perfect for wakes, christenings etc.

**Sports changing rooms and showers:** Recently redecorated and updated.

### For bookings:

Website: [www.pitstonememorialhall.co.uk](http://www.pitstonememorialhall.co.uk) and to see Terms and Conditions of Hire.

General Enquiries: 01296 661271 email: [Hallmanager@pitstone.co.uk](mailto:Hallmanager@pitstone.co.uk)

Bookings: email: [pmhbooking@gmail.com](mailto:pmhbooking@gmail.com)

**What happens at this venue?** See the alphabetical guide.

# ACTIVITY VENUES

## Pitstone Pavilion and Football Pitches, Pitstone (map ref 3)



These recently redeveloped premises on the Marsworth Road (almost opposite the Westfield Road junction) sit on the site of the old Castle Cement workforce football pitch.

There is a new community room, kitchen, and changing facilities as well as the two football pitches and training area for hire.

These premises are owned by Pitstone Parish Council.

The day-to-day management is handled by Pitstone Parish Council's Sports & Leisure

Committee, which consists of members of the Parish Council and co-opted members to represent all the leagues that play regularly at the site and the Ground Keeper.

**Pitstone Pavilion**, Marsworth Road, Pitstone, Leighton Buzzard LU7 9AP

**For bookings:** [www.pitstone.co.uk/localinfo/pitstone-pavilion](http://www.pitstone.co.uk/localinfo/pitstone-pavilion)

**Contact** Mrs Laurie Eagling on 01296 767261 or [parishclerk@pitstone.co.uk](mailto:parishclerk@pitstone.co.uk)

**What happens at this venue?** See the alphabetical guide.

## Yardley Avenue Sheltered Accommodation Lounge, Pitstone (map ref 12)

The sheltered accommodation in Yardley Avenue is run by the Vale of Aylesbury Housing Trust. The elderly residents have a dedicated lounge for social events. Often these events are restricted to the residents only, but sometimes they are open to anyone.



**For further details:** please contact the VAHT Warden, on 01296 732600 email: [contact@vaht.co.uk](mailto:contact@vaht.co.uk)

# ACTIVITY VENUES

## Ivinghoe Town Hall, Ivinghoe (map ref 14)



Ivinghoe Town Hall dates back to the early 16th century and has a long history of supporting the local community, being the meeting place for trading and social events. Whilst it has been modernised over the years to cater for modern day needs, it has lost nothing of its charm and character. The hall is the perfect location for meetings, classes as well as parties and gatherings.

The meeting room is located above the Post Office. A chair lift is provided for those who find the stairs difficult. You can find the Town Hall in the High Street, opposite the Lawn.

**Website:** [www.ivinghoetownhall.org.uk](http://www.ivinghoetownhall.org.uk) for details of the hall, online booking, and regular club information.

**Booking Clerk:** Julie Fretwell, 07469 016745

**email:** [ivinghoetownhallbookings@gmail.com](mailto:ivinghoetownhallbookings@gmail.com)

**What happens at this venue?** See the alphabetical guide for contact details for each club.



## Ivinghoe Old School Community Hub (map ref 20)

We are a motley band of Ivinghoe villagers who have come together as a 'not for private profit' group and achieved a Community Asset Transfer, raised £98,000 funding support and finally restored the Old School premises to full community use. Our vision was for a fully accessible space which because of its

single storey is easily entered by one and all, is welcoming, informal, affordable and delivers to the community needs.

**For more information:** please contact the Hub on 01296 661666, or visit [www.ivinghoeoldschool.com](http://www.ivinghoeoldschool.com) or better still, come in and play!

**Email:** [secretary@ivinghoehub.co.uk](mailto:secretary@ivinghoehub.co.uk)

# ACTIVITY VENUES

## Rose and Crown Public House, Ivinghoe (map ref 18)



A public house since 1699, The Rose and Crown is probably Pitstone and Ivinghoe's oldest surviving business. As well as being run on a day to day basis as the village pub, The Rose and Crown is available for events. There is no charge for the venue; only for catering. The pub is also available for local fundraising activities and regularly contributes to, and assists with, local fundraising initiatives. The pub hosts a number of clubs, groups and activities.

Please check the website for up to date information:  
[www.roseandcrownivinghoe.co.uk](http://www.roseandcrownivinghoe.co.uk) telephone 01296 668472

**What happens at this venue?** See the alphabetical guide for contact details for each club.

# EATING AND DRINKING

## CuriosiTEA Rooms, Ivinghoe (map ref 20)



CuriosiTEA Rooms is a friendly Cafe based in a beautiful Victorian school building in Ivinghoe. With seating both inside and outside and the children's play area and open lawn just a stones throw away, the café is an ideal place to visit for all ages. Offering a variety of sandwiches, toasties, jacket potatoes, soups, salads, hot and cold drinks, cakes and more.

### Opening hours:

Mondays 9am-5.30pm; Tuesdays 9am - 4.30pm; Wednesdays 9am - 2.00pm;  
Thursdays 9am - 4.30pm; Friday 9am - 4.30pm; Saturday & Sunday 10am - 3.00pm

Catering and parties available. Picnic baskets available to hire.

### Contact details:

Telephone: 07775 831153. Website: [www.curiositearooms.co.uk](http://www.curiositearooms.co.uk)

## Rose and Crown Public House, Ivinghoe (map ref 18)



A traditional English village pub dating from the 1600s. Serving great real ales, quality wines and delicious food. Aylesbury Vales 'Best Community Pub' 2010 Runner Up. A Free House, The Rose and Crown is housed in beautiful old buildings complete with barn and coach yard (now the garden bar). Made cosy in the winter by open fires and in summer, the outdoor area is a sheltered sun-trap. You are guaranteed a warm welcome, a memorable meal and a great pint. Open for tea, coffee and cakes, lunch and dinner. Take away tea and coffee also available.

**Opening hours:** Open all day from 9.30am Tuesday to Sunday.

### Contact details:

Telephone: 01296 668472. Website: [www.roseandcrownivinghoe.com](http://www.roseandcrownivinghoe.com)  
Vicarage Lane, Ivinghoe, LU7 9EQ

# EATING AND DRINKING

## Delicious Meal, Pitstone (map ref 15)

Authentic Chinese dishes, freshly made to order. Take away service.

Ample free parking.

**Opening hours:**

Tuesday 5pm-9:30pm

Thursday-Saturday: 5pm-10pm

**Contact details:**

17/19 Marsworth Road, Pitstone, LU7 9AT

Telephone: 01296 661969

## Shwama, Pitstone (map ref 15)

Authentic Turkish Grill

Kebab, Burgers

**Contact details:**

17/19 Marsworth Road, Pitstone, LU7 9AT

Telephone: 01296 662 180 [www.shwama.com](http://www.shwama.com)

## The Haldi Restaurant, Pitstone (map ref 17)

The Haldi promises to bring a new concept in Asian food to the district. The cuisine spans the boundary between traditional and innovative, offering an interesting selection of dishes including Bangladeshi fish and balti specials. Wednesday night is the chefs special 'taster night'.

You are guaranteed a warm

welcome and there is ample free parking. Licensed restaurant or take away service available.

Bookings welcome.

**Opening hours:**

Open 7 days a week, including Bank Holidays

Sunday to Thursday: 12noon-2pm & 5.30-10.30pm

Friday to Saturday: 12noon-2pm & 5.30-11.00pm

**Contact details:**

Telephone: 01296 662204 or 01296 661223. Website: [www.thehaldipitstone.co.uk](http://www.thehaldipitstone.co.uk)

Facebook: [www.facebook.com/thehaldirestaurant](http://www.facebook.com/thehaldirestaurant)

80 Marsworth Road, Pitstone, LU7 9AS

# EATING AND DRINKING—RESTAURANTS AND TAKE AWAYS

## The Kings Head, Ivinghoe (map ref 19)



An appealing mix of oak beams, log fires, antique furniture and fresh flowers sets the scene in the bars, fine dining restaurant, coffee lounge and banqueting suite where the marks of history are firmly stamped. Listed as one of Britain's Finest Restaurants at [www.britainsfinest.co.uk](http://www.britainsfinest.co.uk). The restaurant offers fantastic food and service and an impressive wine list in its 16th century grade two listed building.

### Contact details:

Telephone: 01296 668388. Website: [www.kingsheadivinghoe.co.uk](http://www.kingsheadivinghoe.co.uk).

Email: [reservations@kingsheadivinghoe.co.uk](mailto:reservations@kingsheadivinghoe.co.uk)

Station Road, Ivinghoe, LU7 9EB

## Woodz Pizza, Pitstone (map ref 15)

Woodfired and Stonebaked Pizza

### Opening hours:

Tuesday to Sunday 5pm-10:00pm

### Contact details:

17/19 Marsworth Road, Pitstone, LU7 9AT

Telephone: 01296 531 520

## Mobile services

### Howe & Co Quality Fish and Chips

Howe & Co have been serving up some of the finest fish and chips for over 80 years and deliver to 90 towns and villages.

Tel: 01296 712226, email: [info@howeandcofishandchips.co.uk](mailto:info@howeandcofishandchips.co.uk)

Van 10 travels to various locations around Pitstone, Friday lunchtime from 11:30am

Track at [www.howeandcofishandchips.co.uk](http://www.howeandcofishandchips.co.uk) and 07395833447



# EATING AND DRINKING—RESTAURANTS AND TAKE AWAYS

## Sully's Fish and Chips—Mobile Catering

Contact Details:

07908 241042

[www.sullysfishandchips.co.uk](http://www.sullysfishandchips.co.uk)

We operate within Ivinghoe, Pitstone, Marsworth, Cheddington, Aston Clinton and the surrounding areas.

Pitstone:

**Thursday:** Glebe Close 17:35-18:15 The Crescent 18:15-19:00 Yardley Avenue 19:00-20:00

**Saturday** Yardley Avenue 16:00-17:05 Castlemead 17:10-19:00

# PITSTONE CHARITIES BENEFITTING PARISHIONERS

## The Williamson Trust

Reg. Charity. No. 266108

The Williamson Trust started with a donation of £10,000 derived from the sale of land that formed the first phase of Crispin Field. It came from Mark Williamson (1881 - 1979) a local farmer who lived at 29 Marsworth Road, The Declaration of Trust was signed on 11th July 1973.

### Benefits

This is a single annual grant determined by the interest accrued from assets, in the previous twelve months, divided by the number of qualifying beneficiaries who must **live in the parish and be aged 65 years and over**.

Unless they have previously declined a grant, residents 65 and over in age receive a grant distributed in the first quarter of the year.

Newly qualified residents and those who have recently migrated to Pitstone should make themselves known to a trustee. The Williamson Trust Charity is managed by seven trustees appointed by the Parish Council. The trustees are currently the same as those administrating the Pitstone Town Lands Charity. (A list of trustees is shown under The Pitstone Town Lands Charity).

## Pitstone Town Lands Charity

Reg. Charity. No. 204053

The Pitstone Town Lands Charity can trace its origins as far back as 1422. Income is derived from:-

1. Interest on investments in the form of unit trust shares.
2. Rents paid by tenants of four flats in Cheddington Road
3. Rent from a 6 acre field in the Lower Icknield Way used for horse grazing
4. Rent from a 30 acre field in Cheddington Road Pitstone, and a 13 acre field in Cheddington Road, Marsworth (Bequest from Humphrey Williamson)

Today it benefits people of state pensionable age with grants set out in the table below as well as discretionary payments, not related to age, to individuals, families and organisations in need of financial assistance.

# PITSTONE CHARITIES BENEFITTING PARISHIONERS

Expenditure which must be for the benefit of the charity and Pitstone residents can be divided into four classifications:-

1. Costs associated with maintenance, improvement and administration of the flats.
2. Grants made to organisations which provide certain services and facilities for those resident in the parish
3. Payments to individuals in need, hardship or distress.
4. Age related grants to those in receipt of a state pension.

## Main Grants for Pensioners:

For a long time the trustees have regarded people of pensionable age as among those most in need and have assisted, except where offers have been declined with the following grants.

Requests for payment under this scheme should be supported by a receipt.

Grant towards cost of	Amount
Spectacles (eyes)	up to £175.00
Dentistry (teeth)	At current NHS rates
Chiropody (feet)	up to £28.00

## Other Individual Grants available (not age related):

Examples of individual grants currently made are those to:

1. patients, their relatives or friends, for the cost of travel to hospital or associated services.
2. those having further education or training and who need help towards the expenditure on books, equipment and fees.
3. a bereavement grant of £350 is available towards funeral expenses incurred by the family.

All information given to trustees is treated in the strictest confidence.

# PITSTONE CHARITIES BENEFITTING PARISHIONERS

## Pensioners in Pitstone not in receipt of Grants:

If you are of pensionable age and have previously declined grants it is possible to be included in the next round by informing the trustees, of your change of mind. Also if you are currently unknown to the trustees you may be added to our register which contains the name, address and date of birth of beneficiaries and is maintained solely for the purposes of the charities.

If you would like more information, or to apply for a grant or assistance please contact one of the following trustees:

<b>Name</b>	<b>Address</b>	<b>Telephone Number</b>	<b>Role</b>
Gill Lowe	21 Rushendon Furlong	01296 668809	Chairperson
Kate Smethers	41 Albion Road	01296 661499	Treasurer
Mark Robinson	77 Crispin Field	01296 660724	Trustee
Sue Gregory	4 The Crescent	01296 661609	Trustee
Alasdair Russell	91 Marsworth Road	01296 668673	Trustee
Peter Loose	21 Albion Road	01296 668501	Trustee

# HELP WITH TRANSPORT

## **Free bus to Tesco**

Tesco provides a free bus to either the Tring or Aylesbury store, leaving from the Marsworth Road bus stop at 10.45am every Monday, returning from the Tring Road store at 1.30pm and collecting from the Tring store on the way.

## **Need help getting to your medical appointment? Try the Pitstone Community Car Scheme**

Provides transport to medical appointments, e.g. doctors, dentist, hospital and opticians for the less mobile members of the community in Pitstone and Ivinghoe. Small charge to cover expenses only. See full details on the adverts in PPP magazine or call Stephen on 01296

767116 [communitytransport@pitstone.co.uk](mailto:communitytransport@pitstone.co.uk)

# BIOGRAPHIES OF FAMOUS RESIDENTS

The following biographies first appeared in PPP and are repeated in the guide to continue to inspire us all.

## Butch Baker - Musician

Butch Baker born 16th July 1941 moved to Pitstone at the age of 2 weeks. The family lived at 4 The Crescent during his rise to fame. The Knights of the Round Table were formed in 1959 by Barron Anthony (Anthony Osmond) after he bought himself out of the RAF, all the original members came from the Leighton Buzzard area where the Barron had been stationed. This was at a time when Rock had only begun to Roll and the Hit Parade was not yet a teenager. The likes of Billy Fury, Marty Wilde, Adam Faith and Cliff Richard were putting the fizz into pop music, and Tommy Steele was running amok with 'A Little White Bull'.

In 1960, aged 18, Butch, gave up his day job and became a professional guitarist. On the 5th October, that year, The Knights got up from the roundtable and were promoted to Barrons. They spent their early career as a straight pop group touring and playing in English dance halls before making their way to Hamburg in Germany. Butch joined the band in 1962 replacing Jud Hopkins at the invitation of Barron Anthony and Pete Langford..

The first vein of gold was mined in 1963 when asked by Brian Epstein, 'The Barron Knights', as they were now called, appeared as a support act for 'The Beatles' Christmas Shows at the Finsbury Park Astoria in London. Chart success, came the following year (1964), with 'Call Up the Groups' a medley of parodies, of the pop music, in and around the charts at the time. "Call Up the Groups" found its way to number 3 in the charts, a feat that demanded their debut appearance on Top of the Pops and saw them flown in specially, by the BBC, from the Channel Islands where they were appearing. A flight which was Butch's first time in the air waves and not on them.

Together with Peter Langford (P'nut) Butch was responsible for writing a lot of material for the group and the style of comedy he brought to the group saw him compared with the great Tommy Cooper. Butch credits his father, Maurice with beginning his musical career. "....He taught me to play the banjo when I was eight or nine and then I got a classical guitar, put steel string on it and played that." (*Huddersfield Daily Examiner Feb. 4th 2005*). Butch's first public performance was at Marsworth Village Hall, in a duet with his dad on banjos, aged around eleven. In 1967 the group released the single "Lazy Fat People", a satirical song penned by Pete Townshend of 'The Who'.

'The Barron Knights' climbed the charts with four other hits in the 1960's and 1970's. They went on to great success on the cabaret circuit all round the world and toured for over 47 years before Butch announced his retirement at the Derngate, Northampton on the 27th January 2007. Sharing the bill that night were 'The Fortunes', 'The Tremeloes', and 'Marmalade'.



# BIOGRAPHIES OF FAMOUS RESIDENTS

## Gerry Marshall - Motor Racing Legend



**Gerry Marshall**, saloon car racing driver (born November 16 1941 died April 21 2005) first lived at Thespians Orchard in Chequers Lane later moving to 3 Morton Close. According to a 2002 magazine poll he was considered, by many, to be amongst the best British saloon car racing drivers of all time. His first win was in 1964 at the wheel of a Mini. His 600th win coming in 2000 at Snetterton driving an Aston Martin DB4.

In 1971, he won the Escort Mexico championship, beating future Formula 1 World Champion Jody Scheckter. 1972, saw him win the final race meeting to be held at Crystal Palace, this was an Historic Sports Car race, where he drove a Lister Jaguar. In 1974 driving for the same team as rally driver Roger Clark he finished 2nd in the Avon Tour of Britain. In the 70's Gerry drove for Dealer Team Vauxhall. During this time he was often on BBC TV's Grandstand, at a time when Murray Walker was cutting his teeth on a unique style of commentary. For Vauxhall's he drove what became the legendary Super saloon Vauxhalls, Big Bertha (Ventora), Baby Bertha (Firenza) and Old Nail (the first ever production and race Firenza). The V8 powered Bertha's were prepared by another legend Bill Blydenstein. 'They were the most dramatic things imaginable, especially with Gerry - extrovert, sideways, Mr. Car Control - at the wheel. That's when Marshall really caught the imagination of racegoers.' ( **Mark Hughes, Motorsport, May 2005**). The Firenza and Magnum were variants of Vauxhall's HC Viva.

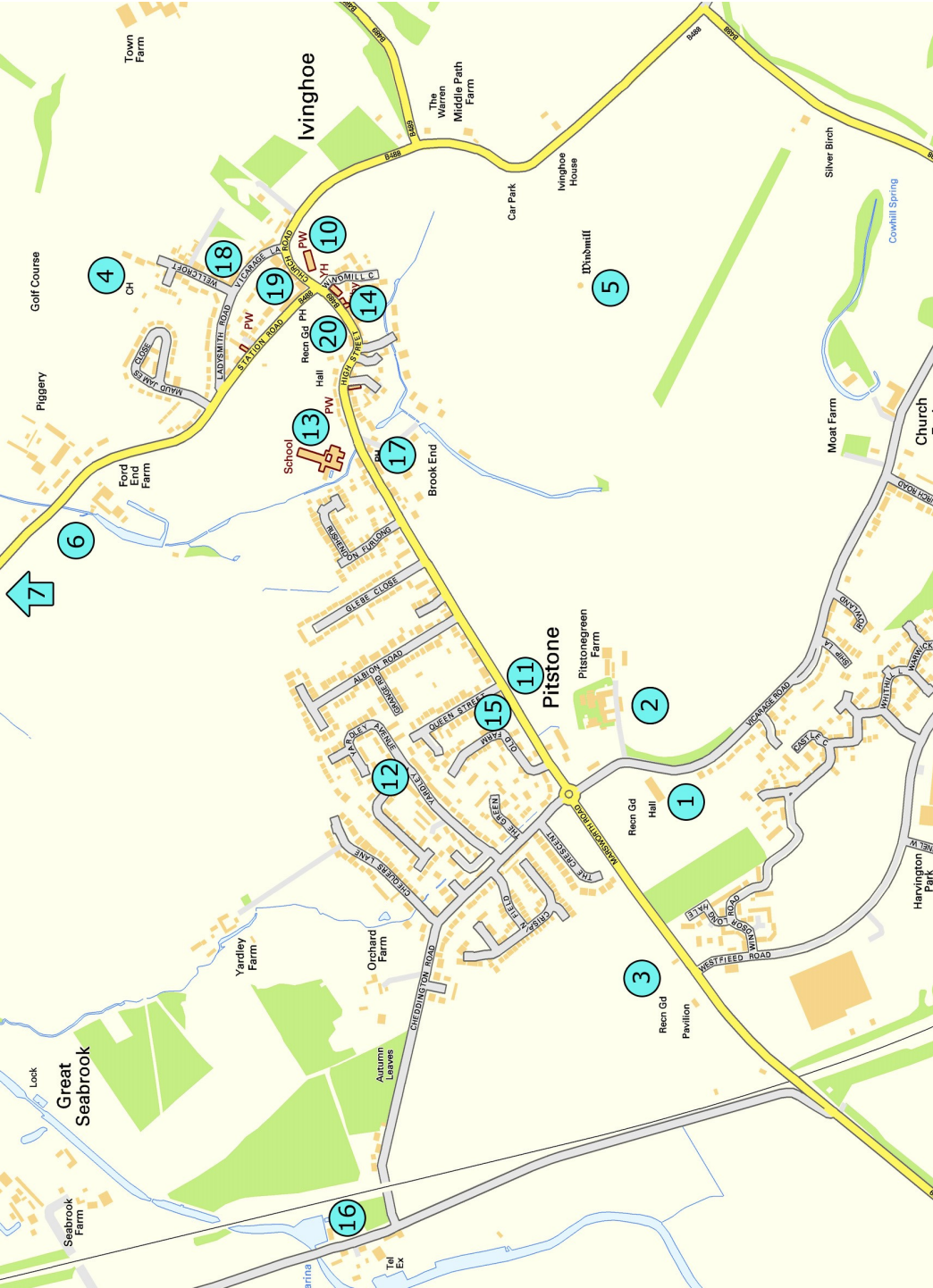
'Marshall's style has been described as "sideways, on-the-edge cornering that was to distinguish his driving in any car, large or small, front or rear drive." This outward appearance belied an extraordinary cool-headed ability and intelligence behind the wheel. His biography, published in 1978, was titled **Only Here for the Beer** and a tribute edition was reissued shortly after his untimely death.' (Wikipedia 13/03/2008)

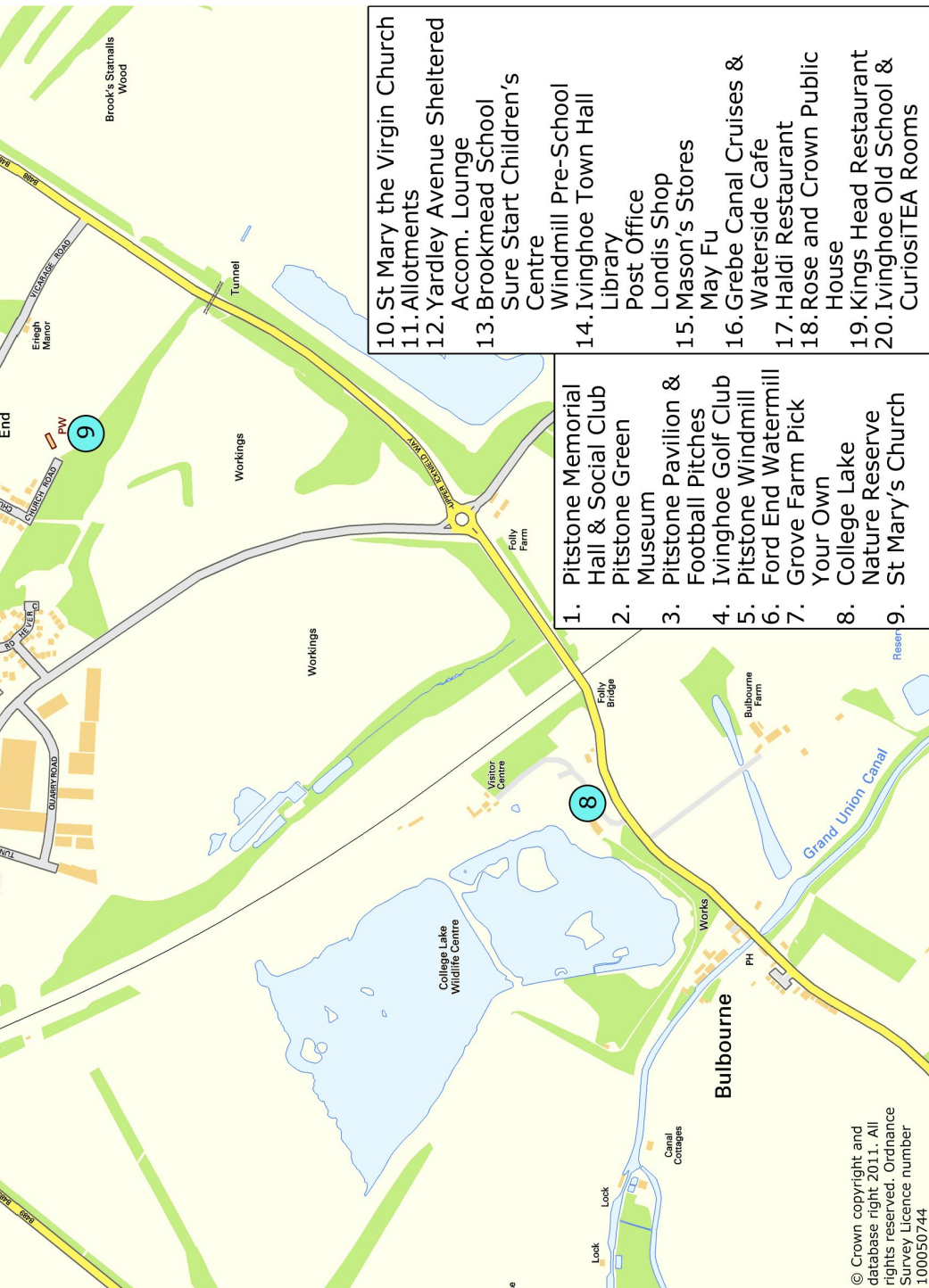
Among the highs of 1979 was the formation of **Gerry Marshall Racing**, which saw him begin preparing cars for other people. However saloon car racing was not without it's perils. The low point came at a race at Silverstone that saw Gerry crash at over 100 mph. The force of the accident caused his helmet to come off (still intact and fastened) and broke the mountings of his seat which meant that he was thrown around the inside of the vehicle like a rag doll. Despite serious injuries, some of which affected him for the rest of his life he was out of hospital, in ten days, and winning races before the end of the season.

'A supremely popular and larger than life character. Gerry was awarded the British Automobile Racing Club Gold Medal in recognition of his outstanding contribution to sport - one of only 34 people to have been accorded that honour.

He died of a heart related illness...doing what he loved - driving a Chevrolet Camaro (the ex-Richard Petty's car) at Silverstone. He slid into the gravel and stopped in front of the British Racing Driver's Club - of which he had been a leading member for years - with Gerry never losing control of the car' (GM Mirror May 2005). Mark Hughes of Motorsport wrote of Gerry "...he was a big old emotional softie underneath it all, and sometimes generous to a fault.....As legends go, they don't come any bigger." (Photos supplied by Vauxhall Motors Limited)







10. St Mary the Virgin Church
11. Allotments
12. Yardley Avenue Sheltered Accom. Lounge
13. Brookmead School Sure Start Children's Centre
14. Ivinghoe Town Hall Library Post Office
15. Mason's Stores May Fu
16. Grebe Canal Cruises & Waterside Cafe
17. Haldi Restaurant
18. Rose and Crown Public House
19. Kings Head Restaurant
20. Ivinghoe Old School & CuriosITEA Rooms

1. Pitstone Memorial Hall & Social Club
2. Pitstone Green Museum
3. Pitstone Pavilion & Football Pitches
4. Ivinghoe Golf Club
5. Pitstone Windmill
6. Ford End Watermill
7. Grove Farm Pick Your Own
8. College Lake Nature Reserve
9. St Mary's Church

© Crown copyright and database right 2011. All rights reserved. Ordnance Survey Licence number 100050744

# BIOGRAPHIES OF FAMOUS RESIDENTS

## Robert Holmes - Script Editor 'Doctor Who'

Robert Colin Holmes (2nd April 1926 -24 May 1986) lived at 'The White House' 65 Marsworth Road in the swinging sixties and 1970's with his wife, son Nicholas and daughter Lorraine. He distinguished himself early in life by being the youngest ever commissioned officer in the Queen's Own Cameron Highlanders, serving in Burma. Back in 'civvy' street he joined the police and passed out top of his year at Hendon Police College. Later he became a court reporter and journalist. Working as a sports reporter, found him, in the Midlands where he became the final editor of "The John Bull Magazine". It was at this time, during the 1950's, that he began submitting material to Granada television for their series "Knight Errant".

He worked as a Script Editor on **Doctor Who** between 1974 and 1977 and had previously submitted scripts. His tenure saw, come and go, 6 Producers, 5 Doctors, 11 assistants to the doctor (4 of whom he introduced) over a period of 18 seasons. His total of 18 scripts which included 4 based on stories by other writers or co-written, again put him top of his class, with, only, Terry Nation contributing a count of more than 9.

After 1979, Robert Holmes moved away from **Doctor Who** to concentrate on other projects mainly within the science fiction genre. Returning in 1984 he wrote the script that saw Peter Davison metamorphose into Colin Baker. After Colin Baker's first season, work on a draft script for the next season and plans to bring him back as Script Editor were undone by his untimely death after a short illness.

Robert Holmes is widely acknowledged as having had the biggest influence, as a Script Editor, on the success of "Doctor Who". A poll, in the 80's, among the reader's of the fanzine "DWB" gave him 74% of the votes as the readers favourite. Second place went to Terrance Dicks, with 4% of votes.

"I am not a fan of Sherlock Holmes but I am a fan of that fictitious Victorian period, with fog, gas lamps, Hansom cabs and music halls. We look back on it and say that's what it was like, although of course it wasn't - people were slaving in dark, satanic mills and starving in London gutters." Robert Holmes. It is possible to say that his career ended as it began top of his class. (Information for this article was taken from Internet sources)

## John and Roy Boulting - Film Makers

The Pitstone census of 1939 shows the following entry about the parents of our subjects :  
**RE122** 1939 **Boulting**, Roy Alfred and Marian Angela, The Green

John and Roy Boulting born in that order on the 21 November 1913, at Bray Berkshire, were identical twins, born five minutes apart, whose career in film making started at public school where they formed a film society. As a partnership they established Charter Films in 1937 as their own independent production company. Their first success, which labelled them as "earnest evangelicals", came with the films, Pastor Hall (1940) inspired by the persecution of Pastor Niemoller, the first feature film to expose the horror of the Nazi concentration camps and Thunder Rock (1942), steeped in symbolism, which saw a journalist (Michael Redgrave) so disillusioned by Europe's apathetic response to the rise of fascism in the 1930's that he takes a job as a lighthouse keeper on Lake Michigan where he is confronted by the ghosts

# BIOGRAPHIES OF FAMOUS RESIDENTS

of immigrants from a boat which sank 100 years before. The doomed ship represented Europe heading for disaster.

During the Spanish Civil War John volunteered as an ambulance driver as part of the International Brigade, on the front line. Later WW2 service saw the brothers separated again with John in the RAF and Roy a captain in the army.

In the 1940's they were a breath of fresh air to the British film industry, spinning it off its axis in the same way that the Beatles affected the music industry twenty years later. Their earlier films made use of locations in the area, where they lived, a trend which continues today, next time you watch the Birthday Girl starring Nicole Kidman watch out for a guest appearance by Pitstone Windmill. Among Roy's credits is the film Inquest (1940) which features scenes of a cricket match at the recreation ground at a time when the site of the Tunnel Cement Works was less than three years old and the cross-roads marked the Lower Icknield Way rather than a modern day roundabout. After the war they concentrated on a series of films that reflected the uniqueness of the British character and illustrated the way of life recovering from the 2nd World War. The 1940's were illuminated by Fame Is The Spur (1946) and Brighton Rock (1947), written by Graham Greene, Berkhamstead's famous son and starring Richard Attenborough (as the gangster Pinkie Brown). In the 1950's Seven Days To Noon shone the light on social paranoia. The 1950's were marked out by a number of films concentrating on a theme of social observation. Peter Sellers, Ian Carmichael and Terry Thomas featured in some of their best remembered satires. The brothers were always political but their voice could only be heard in the form of comedies, where they found it possible to raise the finance.

The army life of Stanley in Privates Progress (1956) followed him in the film I'm All Right Jack (1959) onto the factory floor which was an observation on the workings of trade unionism which so offended the trade unions that the Association of Cine Technicians were moved to start a five year legal battle with the brothers for the non-payment of union dues. Their defence on what was seen as attacks on the establishment was that they were standing up for the individuals rights versus the twin threat of big business and organised labour. By lampooning all forms of established society, the legal system in the film Brothers In Law, the Church in Heavens Above and the civil service in Carlton Brown Of The FO the brothers opinion was that no particular body could take special offence as they had all been touched.

***"When we started we made low-budget films with a high mind. They earned us wonderful notices, many letters from earnest film lovers, and the deep suspicion of the film industry"***

During their careers they mainly worked together swapping the roles of producer and director on different projects. John's last film, as a director, was 1966's Rotten to the Core. He continued until the early 1970's to work as a producer and as Managing Director of British Lion. His brother Roy directed up until 1985 when he worked on two episodes of the BBC Miss Marple Series. Together they made over sixty films. Sir Richard Attenborough said of them "John and Roy were two of the most original and courageous of British film-makers. They fought passionately for creative freedom and rejected any finance which sought to deny it. They cared deeply about the content of their films which epitomized their own convictions. They gave me my first opportunities as an actor in the cinema in Brighton Rock and The Guinea Pig...". John died on June 17, 1985, in Sunningdale, Berkshire and Roy on November 5, 2001. Sources: (Guardian) [film.guardian.co.uk](http://film.guardian.co.uk) and (British Film Institute) [www.bfi.org.uk](http://www.bfi.org.uk)

# A-Z OF SPORTS, ACTIVITIES AND CLUBS

## ANGLING

The Tring Anglers are a small, friendly club committed to improving and promoting fishing. They are based on the Grand Union Canal, Aylesbury Arm at Marsworth Reservoir.

Contact: Dave Burton **07837 273054** or visit [www.tringanglers.org.uk](http://www.tringanglers.org.uk) or email [daveburton50@gmail.com](mailto:daveburton50@gmail.com)

## BADMINTON

### (PITSTONE BADMINTON CLUB)

One court at the main hall at Pitstone Memorial Hall. Takes place each Monday between September and July 7.30pm-10.00pm. The club is friendly, and competes in the Aylesbury and District Leagues.

Contact Andrea Mitchell on **07949 394896** or [pitstonebc@outlook.com](mailto:pitstonebc@outlook.com)

## ARCHERY

Chiltern Archery are based at the Archery Centre (the largest archery centre in Europe), Buckland Village, Aston Clinton. With over 7 acres of outdoor shooting plus 30m 7 boss indoor range. Beginners courses available.

Contact: **01296 630919** or visit [www.chiltern-archery.co.uk](http://www.chiltern-archery.co.uk)



## BALLET DANCING—FOR CHILDREN

Fun classes for children in ballet, following the ISTD syllabi, with qualified, registered teachers. Monday afternoons from 2.30pm (term time only) at Ivinghoe Town Hall for children aged 3 years or over. You are welcome to come along for a trial session.

Contact: Lisa Sabatini, Beacon Arts, The Studios, 3 Boss Avenue, Leighton Buzzard, LU7 4SD

Tel: **07834 281434**

Email: [lisabeaconarts@yahoo.co.uk](mailto:lisabeaconarts@yahoo.co.uk)  
[www.beaconartsdanceschools.co.uk](http://www.beaconartsdanceschools.co.uk)

## BABY & TODDLER GROUP

**Ivinghoe & Pitstone Baby and Toddlers** meet at Pitstone Memorial Hall every Thursday morning during term time from 09:30-11:00. You can be sure of a warm welcome & cup of coffee, and for the little ones there is a variety of activities, music sessions, arts & crafts, toys, games and story time. No need to book, just turn up on the day. Contact: [www.pitstoneandivinghoetoddlers.btck.co.uk](http://www.pitstoneandivinghoetoddlers.btck.co.uk)

# A-Z OF SPORTS, ACTIVITIES AND CLUBS

## BEAVERS

For children aged 6-8 years.

Part of 1<sup>st</sup> Ivinghoe & Pitstone Scout Group. Meet at the Scout HQ next to the

Lawn in Ivinghoe term time:

Monday, Watermill Pack 6.00-7.00pm

Tuesday, Windmill Pack 6.00-7.00pm

Group Scout Leader, Andrew Woods

**07768 980 311**

Email:

[vinghoe.pitstone.scouts@gmail.com](mailto:vinghoe.pitstone.scouts@gmail.com)



## BEFRIENDING (TRING LINKING LIVES)

Tring Linking Lives is a befriending service aimed at those of any age who find themselves requiring some extra friendship and support.

**07305 257160 or 01442 824054**

Email: [admin@tringbaptistchurch.co.uk](mailto:admin@tringbaptistchurch.co.uk)  
[www.tringbaptistchurch.co.uk/  
linkinglives](http://www.tringbaptistchurch.co.uk/linkinglives)

## BOWLS (BEACON SHORT MAT BOWLS CLUB)

Full size woods on mats 45' x 6'. Main

Hall of Pitstone Memorial Hall

Wednesday 09:45-12:15

Thursday 19:00-21.30

(Oct-Apr)

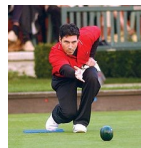
Contact: Peter Coker, 12 Crispin Field,

Pitstone on **01296 661176** or

[coker839@gmail.com](mailto:coker839@gmail.com)

## BOWLS

### (CHEDDINGTON BOWLS CLUB)



Bowls can be played by all ages, abilities and sexes so the whole family can enjoy it together. Outdoor bowling green on the Recreation Ground, High Street, Cheddington.

Open sessions every Tuesday at 2pm and Friday at 6pm from May to September—so come along and give it a try.

Contact: Christine Yates on

**01525 220 739** or visit

[www.bucksinfo.net/cheddington-bowls-club](http://www.bucksinfo.net/cheddington-bowls-club)

## BOXERCISE

At Zone Fitness Studio

In the heart of Pitstone, located in the Memorial Hall and outside on Pitstone Rec. and on Ivinghoe Lawn.

Join us for an all-over non-contact body workout, boxing in pairs with pads and gloves, incorporating circuit style exercises, fun routines and drills. Trials welcome and pay as you go available.

Call Kaz on **07903 274503**

Email: [zonefitnessstudio@gmail.com](mailto:zonefitnessstudio@gmail.com)

Web: [www.zonefitnessstudio.uk](http://www.zonefitnessstudio.uk)



# A-Z OF SPORTS, ACTIVITIES AND CLUBS

## BROWNIES

For girls aged 7-10 years.  
Main Hall of Pitstone Memorial Hall 5.45-  
7.15pm on Monday during term time.  
To join please visit [http://  
www.girlguiding.org.uk](http://www.girlguiding.org.uk)

## CRAZY GOLF / GIANT CHESS / CROQUET



Gadebridge Park, Hemel Hempstead open  
throughout the summer.  
Also available: croquet, petanque, giant  
chess and draughts and outdoor table  
tennis.

Contact: **01442 230668**

## CHOIR – BEACON COMMUNITY CHOIR

Meets during term time only on Thursday  
evenings between 8.15pm-9.30pm at St  
Mary's Church in Ivinghoe. Join us for a  
cup of tea beforehand at 8.00pm.

No audition or experience required. Do  
not require ability to sight read music but  
basic ability to follow music is helpful.

We are led by an experienced  
professional musical director.

All welcome.

Contact: Linsay Hewlett

**07986 009157**

Email: [lhewlett@btinternet.com](mailto:lhewlett@btinternet.com)

[www.beaconcommunitychoir.co.uk](http://www.beaconcommunitychoir.co.uk)

## CRICKET – IVINGHOE & PITSTONE UNITED CRICKET CLUB

Home matches for the first and second  
teams on the Recreation Ground in  
Pitstone in the Mid Bucks Cricket League  
on Saturdays, friendly matches on  
Sundays and mid-week evening knock-  
outs.

There are also growing juniors teams; All  
Stars 5-8 year olds

Dynamos 9-11 year olds

Colts 11-17 year olds in the Aylesbury &  
District mid week league with coaching  
every Friday evening during the cricket  
season.

Seniors Contact: David Frankum

**0776 1478045**

Juniors Contact: Alec Henson

**07505 000648**

Website: [www.ivinghoeandpitstone.play-  
cricket.com](http://www.ivinghoeandpitstone.play-cricket.com)



# A-Z OF SPORTS, ACTIVITIES AND CLUBS

## CUBS

For children aged 8-10.5 years.

Part of 1<sup>st</sup> Ivinghoe & Pitstone Scout Group. Meet at the Scout HQ next to the Lawn in Ivinghoe during term time.

Wednesday, Windmill Pack 6.30-8.00pm

Thursday, Watermill Pack 6.30-8.00pm

Group Scout Leader, Andrew Woods

**07768 980 311**

email

[ivinghoe.pitstone.scouts@gmail.com](mailto:ivinghoe.pitstone.scouts@gmail.com)

## DRAMA

### (TRING SHOWSTOPPERS)

At Pitstone Memorial Hall every Wednesday during term time.

4.00pm-5.00pm for 6-11 years and

5.00pm-6.00pm for 12-18 years

Contact: Kate Turnley on

01296 661389

[kate@tringshowstoppers.co.uk](mailto:kate@tringshowstoppers.co.uk) or visit

[www.tringshowstoppers.co.uk](http://www.tringshowstoppers.co.uk)

## CYCLING - Ivinghoe Velos

The Ivinghoe Velos are a group of residents of the Buckinghamshire villages Ivinghoe and Pitstone that get together regularly for a bike ride. It is suitable for all fitness and equipment levels. Lycra and carbon fibre definitely not essential! The main rides are from the [Rose and Crown Pub](#) in Ivinghoe

[www.ivinghoevelos.org.uk](http://www.ivinghoevelos.org.uk)

[facebook.com/ivinghoe.velos](https://facebook.com/ivinghoe.velos)

[twitter.com/Vinghoevelos](https://twitter.com/Vinghoevelos)

## FENCING

Dacorum Fencing Club, based in various venues in Hemel Hempstead.

Contact:

[membersecretary@hotmail.co.uk](mailto:membersecretary@hotmail.co.uk) or

visit

[www.dacorum-fencing.co.uk](http://www.dacorum-fencing.co.uk)

## FOOTBALL – P & I JUNIOR FOOTBALL CLUB

Football training sessions and matches for both boys and girls aged 5-18 years.

Email: [secretary@pandifootball.net](mailto:secretary@pandifootball.net) or visit [www.pandifootball.net](http://www.pandifootball.net)

# A-Z OF SPORTS, ACTIVITIES AND CLUBS

## FOOTBALL – P & I UNITED FOOTBALL CLUB (SENIOR)

Matches Saturday afternoons during the football season at the sports pavilion.

Contact: Stuart Plenty on  
**07732 309520** or email  
[stuplenty@googlemail.com](mailto:stuplenty@googlemail.com)

## FOOTBALL – P, I & C UNITED FOOTBALL CLUB (SENIOR)

Matches Sunday mornings, kick off 10:30 during the season at the recreation ground.

Contact: Nik Sabatini on  
**07931 992947** or email  
[solox90@hotmail.com](mailto:solox90@hotmail.com)

## GOLF

Ivinghoe Golf Club, Wellcroft, Ivinghoe. Opened in 1967, this family run 9 hole golf course, set in the beautiful Chiltern Hills, provides challenging golf to all ages & abilities. Men's, Ladies, Senior & Junior sections. Open to visitors daily. There is also a large, well stocked Pro Shop, offering tuition and club repairs. Hot and cold food available in the clubhouse.

Contact: **01296 668696**  
Email: [info@ivinghoegolfclub.co.uk](mailto:info@ivinghoegolfclub.co.uk)  
[www.ivinghoegolfclub.co.uk](http://www.ivinghoegolfclub.co.uk)

## GUIDES

Fun and challenging activities for girls between 10-14 years. Held in Millennium Room at Pitstone Memorial Hall on Tuesdays during term time.  
To join please visit: <http://girlguiding.org.uk/>

## HERBALIFE – WELLNESS COACHING

Sports nutrition, weight management, energising & general support for healthy lifestyles and skin care.

Please contact Eve or Nick Smellie for full details;

**01296 660330** or email  
[info@naturalwellbeing.info](mailto:info@naturalwellbeing.info)

## HOCKEY

Tring Hockey Club  
Tring Park CC, London Road  
Contact us via the website;  
[www.tringhockeyclub.org](http://www.tringhockeyclub.org)

## HORSE RIDING

Rocklane Riding Centre  
Orchard Farm  
Ivinghoe Aston  
Leighton Buzzard  
Bedfordshire  
LU7 9DL

Please contact James Tossell on  
**07762 343425**  
[rocklane1066@yahoo.co.uk](mailto:rocklane1066@yahoo.co.uk)  
[www.rocklaneridingcentre.co.uk](http://www.rocklaneridingcentre.co.uk)

# A-Z OF SPORTS, ACTIVITIES AND CLUBS

## HORSE RIDING FOR THE DISABLED

### Gaddesden Place RDA Centre

Briden's Camp, Hemel Hempstead  
HP2 6EX

Contact: Louise, Centre Manger

**01442 246924**

Email: [info@gaddesdenplacerrda.org.uk](mailto:info@gaddesdenplacerrda.org.uk)

[www.gaddesdenplacerrda.org.uk](http://www.gaddesdenplacerrda.org.uk)

[www.rda.org.uk](http://www.rda.org.uk)

## INDOOR CYCLING (SPIN CLASSES)

At Zone Fitness Studio

A pop-up spin studio right in the heart of  
Pitstone, located in the Memorial Hall. Get

fit with these popular, fun,  
upbeat and motivational classes for all  
abilities and ages (13yrs+) taking place  
throughout the week from Monday to Fri-  
day. Trials welcome and pay as you go  
available

Call Kaz on **07903 274503**

Email: [zonefitnessstudio@gmail.com](mailto:zonefitnessstudio@gmail.com)

Web: [www.zonefitnessstudio.uk](http://www.zonefitnessstudio.uk)

# A-Z OF SPORTS, ACTIVITIES AND CLUBS

## JAZZERCISE

Dance fitness classes at Cheddington Village Hall Mon 7pm & Tues 9.30am and Pitstone Memorial Hall on Wednesdays at 7.30pm.

Daytime & weekend classes also available at Wilstone Village Hall.

Visit [www.jazzercisebbh.com](http://www.jazzercisebbh.com) to search for your nearest class or contact Keri Donnellan on

Tel: **07900 987230**

email: [jazzercise1@hotmail.co.uk](mailto:jazzercise1@hotmail.co.uk)

## MODERN DANCING

Fun classes for children in modern dance following the ISTD syllabi, with qualified, registered teachers. Friday afternoons from 4.15pm (term time only) at Pitstone Memorial Hall for children aged 5 years or over. You are welcome to come along for a trial session.

Contact: Lisa Sabatini, Beacon Arts, The Studios, 3 Boss Avenue, Leighton Buzzard, LU7 4SD

Tel: **07834 281434**

Email: [lisabeaconarts@yahoo.co.uk](mailto:lisabeaconarts@yahoo.co.uk)  
[www.beaconartsdanceschools.co.uk](http://www.beaconartsdanceschools.co.uk)

## GENESIS MARTIAL ARTS

Mondays and Wednesdays  
17:00-18:00 Dragons (age 5-8)  
18:00-19:00 Juniors (age 9-14)  
19:00-20:00 Adults (age 15+)

At Mandeville School  
Ellen Road, Aylesbury  
HP21 8ES

Contact: Trevor John

**07780 668033**

Email: [trevor@genesis-ma.com](mailto:trevor@genesis-ma.com)  
[www.genesis-ma.com](http://www.genesis-ma.com)

## OVER 60'S CLUB

Pitstone over 60's meet at 2.00pm in the Yardley Avenue Lounge on the third Thursday of every month with talks and craft demonstrations. New members welcome.

### First Thursday Friends

Getting together for a film (with subtitles), a chat and a cup of tea, every first Thursday in the month in the Millennium Room, Pitstone Memorial Hall at 2pm (film start)

Contact: Margaret on

**01296 668005**

# A-Z OF SPORTS, ACTIVITIES AND CLUBS

## PHOTOGRAPHY

The "Photo Group" meets fortnightly from September to June at the Rose & Crown.

Contact:

[info@roseandcrownivinghoe.com](mailto:info@roseandcrownivinghoe.com) or

call The Rose & Crown on

**01296 668472.**

## QUIZ NIGHTS

Run monthly on the last Tuesday of the month at the Rose & Crown.

Contact:

[info@roseandcrownivinghoe.com](mailto:info@roseandcrownivinghoe.com) or

call The Rose & Crown on

**01296 668472.**

## PILATES

Beacon Pilates

Various classes held in the Millennium Room at Pitstone Memorial Hall.

Weekly Step & Stretch at Pitstone Pavilion

Contact: Karen-Anne Fisher on

**01296 668904**

## QUIZ NIGHTS

Held regularly at Pitstone Memorial Hall. Bar opens 7.30pm, quiz starts at 8.00pm.

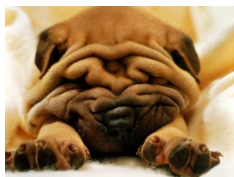
Contact: for the latest dates or to book a table.

## RAINBOWS

Fun activities for girls aged 5-7 years held in the Main Hall of Pitstone Memorial Hall 4.30pm-5.30pm Mondays during term time.

To join please visit  
[www.girlguiding.org.uk](http://www.girlguiding.org.uk)

## PUPPY & DOG TRAINING



The Chiltern Dog School hold weekly classes outdoors at Berkhamsted Hockey Club, Lockhart Field, Cow Roast. Puppy training, adult dog training and 1:1 sessions.

Contact: Jon Peplow on **01442 864394** or **07748 847 363**

email [jon@chiltern-dog-school.co.uk](mailto:jon@chiltern-dog-school.co.uk)

## ROYAL BRITISH LEGION

Ivinghoe & Pitstone Branch

Contact: Margaret Johnson,

6, Lukes Lea, Marsworth

[margo.j@btinternet.com](mailto:margo.j@btinternet.com)

**01296 661280**

## RUGBY

Tring Rugby Club

Dorian Williams Sports Ground

Cow Lane, Tring HP23 5NS

Contact: **01442 825710** or visit

[www.tringrugby.com](http://www.tringrugby.com)

# A-Z OF SPORTS, ACTIVITIES AND CLUBS

## RUGBY

Aylesbury RFC

Ostlers Field, Brook End, Weston Turville.

Juniors from under 7 years plus adults.

Contact: Paul Milham **07802 607268**

Email: [gm@aylesburyrfc.co.uk](mailto:gm@aylesburyrfc.co.uk)

[www.aylesburyrfc.co.uk](http://www.aylesburyrfc.co.uk)

## SCOUTS

For children aged 10.5-14 years.

Part of 1<sup>st</sup> Ivinghoe & Pitstone Scout Group. Meet at the Scout HQ next to the Lawn in Ivinghoe during term time

Friday 7.30-9.00pm.

Group Scout Leader, Andrew Woods

**07768 980 311**

[vinghoe.pitstone.scouts@gmail.com](mailto:vinghoe.pitstone.scouts@gmail.com)

## RUNNING

Tring Running Club

Seniors meet at 7.20pm on Wednesdays at Tring Park Cricket Club

Contact: [www.tringrunningclub.org.uk](http://www.tringrunningclub.org.uk)

Dacorum and Tring Athletics Club

For juniors interested in more running and athletics. Meetings are in Tring or at the Athletics Track at Jarman Fields in Hemel Hempstead.

Contact:

[www.dacorumandtringac.org.uk](http://www.dacorumandtringac.org.uk)

## SQUASH

Tring Squash Rackets Club is based at Pendley Sports Centre on Cow Lane, Tring. HP23 5NS. Lessons available.

Contact: **01442 826480** or email:

[tsrc.membership@googlemail.com](mailto:tsrc.membership@googlemail.com)

[www.tringsquashclub.co.uk](http://www.tringsquashclub.co.uk)

## RUNNING / PARK RUN

Free timed 5k running event every Saturday at 9am in Tring Park.

Visit: [www.parkrun.org.uk/tring](http://www.parkrun.org.uk/tring)

## SAILING

Aylesbury Sailing Club based on the Weston Turville Reservoir is a family club encouraging a year round interest in recreational and racing sailing.

Contact: Peter Heller

Telephone: **07887838682** email

[aylesburysailingclubcontact@gmail.com](mailto:aylesburysailingclubcontact@gmail.com)

or visit

[www.aylesburysailingclub.org.uk](http://www.aylesburysailingclub.org.uk)

## STEP AEROBICS

### (BODY ELECTRIC FITNESS)

Held in the Millennium Room at Pitstone Memorial Hall.

9.30-10.30am Tuesdays term time only

Contact: Karen-Anne Fisher on

**01296 668904** or visit

[www.bodyelectricfitness.co.uk](http://www.bodyelectricfitness.co.uk)

# A-Z OF SPORTS, ACTIVITIES AND CLUBS



## STORYTIME

2.15-2.45pm on Tuesdays at Beacon Villages Community Library, Ivinghoe

## SWIMMING

Tring Swimming Club

Tring Sports Centre, Mortimer Hill

Contact: **01296 660403**, email

[info@tringswimmingclub.co.uk](mailto:info@tringswimmingclub.co.uk) or visit

[www.tringswimmingclub.co.uk](http://www.tringswimmingclub.co.uk)

The swimming pool is also open for general public swimming during the evenings, weekends and school holidays.

Contact: **01442 228957** or visit

[www.sportspace.co.uk](http://www.sportspace.co.uk)

The Beavers Swimming Club for the Disabled also operates from Tring Sports Centre.

Contact: Olive Conway on

**01442 381204.**

## TAP DANCING

Fun classes for children in tap dance following the ISTD syllabi, with qualified, registered teachers. Friday afternoons from 3.45pm (term time only) at Pitstone Memorial Hall for children aged 5 years or over. You are welcome to come along for a trial session.

Contact: Lisa Sabatini, Beacon Arts, The Studios, 3 Boss Avenue, Leighton

Buzzard, LU7 4SD

Tel: **07834 281434**

Email: [lisabeaconarts@yahoo.co.uk](mailto:lisabeaconarts@yahoo.co.uk)  
[www.beaconartsdanceschools.co.uk](http://www.beaconartsdanceschools.co.uk)

## TENNIS

Cheddington Tennis Club at the Recreation Ground off the High Street in Cheddington. Competitive and social tennis plus tuition for adults and juniors.

Contact: Matthew Soundy on

**01296 668767** or visit

[www.cheddingtontennis.co.uk](http://www.cheddingtontennis.co.uk)



# A-Z OF SPORTS, ACTIVITIES AND CLUBS

## WALKING

Simply Walk weekly volunteer led walk of 30-45 minutes to improve your health and wellbeing, meet new people and socialise.

Open to all, but particularly suitable for those that are inactive.

Meets at 9.45am each Monday outside the Ivinghoe Old School Community Hub.



There is an option to have tea / coffee at CuriosiTEA afterwards.

Contact: Abi Parveen on  
**01296 387031**

## WOMEN'S INSTITUTE

Run a full and varied programme of events, speakers, variety of interest groups and have a supper club that frequents local restaurants.

Meet at 7:30pm for 7.45pm on the second Thursday of each month at Ivinghoe Town Hall. New members are always very welcome and you can go along to a couple of meetings for free before deciding if you wish to join. Annual membership fee (in 2020) was £43. Contact: Sue Eyre (President) on **01296 709281 or 07742 138955**  
Email: [s\\_a\\_eyre@hotmail.com](mailto:s_a_eyre@hotmail.com)

## YOGA

### ZEST YOGA

Tuesdays at Pitstone Pavilion

Zest Yoga - 09:15-10:15

Yoga for Sport 19:45-20:45

Contact: Annabel

**07595 896661**

[annabel@zest-yoga.com](mailto:annabel@zest-yoga.com)

[twitter.com/ZestYoga](https://twitter.com/ZestYoga)

Website: [www.zest-yoga.com](http://www.zest-yoga.com)

[www.facebook.com/zestyoga.tring/](https://www.facebook.com/zestyoga.tring/)

## YOUTH CAFE

If you are in school years 7-13 come along to Pitstone's Youth Cafe 6.30pm-8.00pm every Wednesday evening at Pitstone Pavilion. As well as refreshments, the cafe offers activities like computer games, games, sports, skate ramps & music.  
£2 per week.

Contact: Laurie Eagling on

**01296 767261** or email

[parishclerk@pitstone.co.uk](mailto:parishclerk@pitstone.co.uk).

## ZUMBA

Classes at 7.00pm every Tuesday at Ivinghoe Town Hall.

Contact: Carolyn Syme

**07941 092673**

Email: [c.syme26@gmail.com](mailto:c.syme26@gmail.com)

[www.zumba.com](http://www.zumba.com)

# WALKS

## A safer Way to Walk to The Grand Junction Arms



About 2 ½ miles to the pub with another 3 if you extend the walk right round to the swing bridge and back to Pitstone that way.

Starting from the Memorial Hall go out of the car park and turn right into Vicarage Road. Continue up the road until you turn right into Church Road. Keep straight along Church Road and onto the public footpath across the quarry. When you get to Westfield Road keep left to the roundabout. Go across the roundabout and a few yards up Northfield Road till you come to a stile on your left. (For those who cannot manage stiles there is a gap in the hedge a little further up.)

Continue along this footpath until it veers to the left to go up the hill. At this point you will find a gate into Northfield Road on your right. There is a footpath here along the verge which makes this safer. Taking care cross the road at the entrance to Park Hill Farm. Continue down the drive through the farm and the wide gate. Cross the bridge over the railway and past two more houses on a metalled road. This road goes towards Tring. Follow it only until you come to the canal. If you continued you would come out by Grove Road School. Take the towpath the other side of the bridge to the right which can be wet in winter. This will lead you along the Tring summit to the Grand Junction Arms. You can also visit the garden centre further up the road past the pub.

On the way back this walk can be varied in three ways.

1. About 200 yards back along the towpath there is footpath signed up to the right. This goes along the field edge to the road and is drier in winter.
2. When you cross the canal bridge at the end of the summit, instead of continuing up the road take a footpath to the left which is clearly marked. It goes around the chicken farm (Chickens are all protected by electric fencing) and diagonally across a field to the

railway which it follows to the bridge on the B488. Here care needs to be taken in crossing the bridge and following the road up to the roundabout though most of the verge is well trodden. Here it is possible to cross a low stile to your left and follow the extension of the footpath which comes out further down Westfield Road. Here you cross the road and follow the original route back to the Memorial Hall.

3. It is of course possible to complete the circuit by continuing along the towpath of the Grand Union through Marsworth passing the Waters Edge Cafe, Angler's retreat and the Red Lion (now closed). If you chose this route you can leave the canal at Cook's Wharf and turn left down Cheddington Road which will take you back to the Memorial Hall.

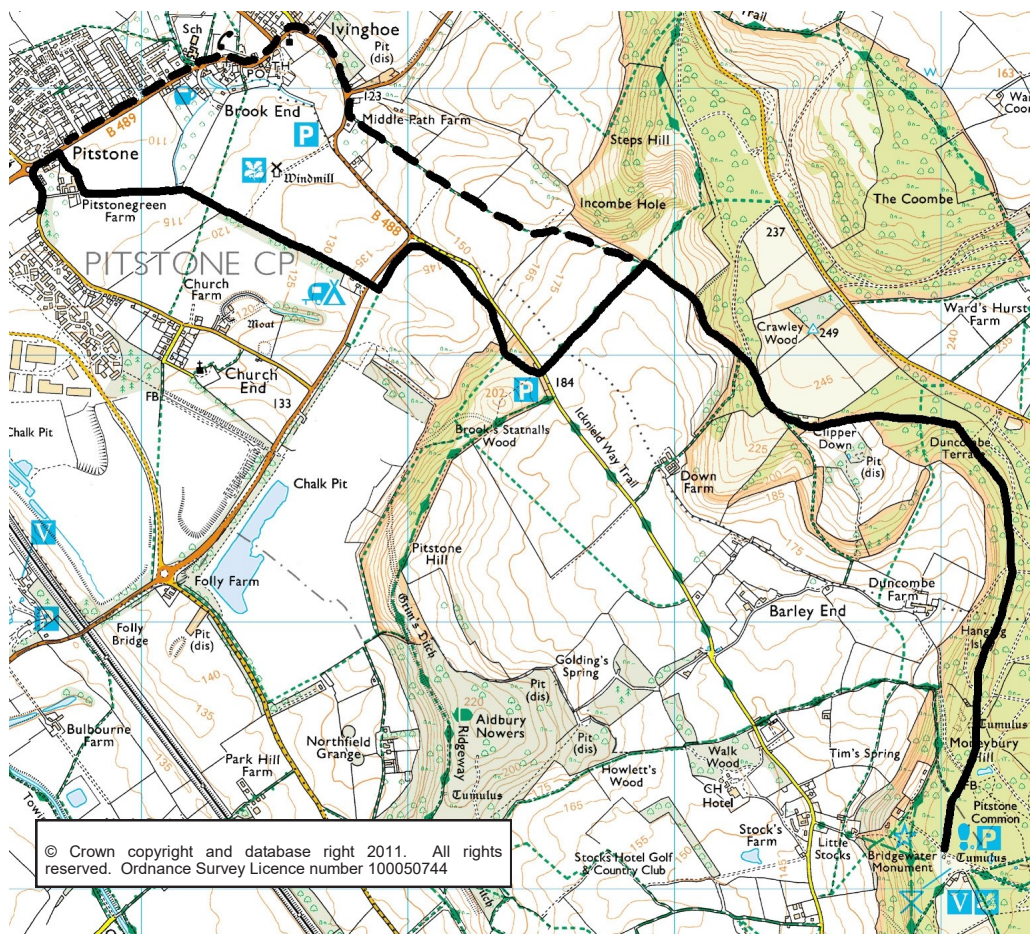
## Walk to the monument.

Just under 4 miles with a fair amount of uphill.

\*Starting from the Memorial Hall car park go to the roundabout and turn right up Marsworth Road into the village. After about 200 yards take the smaller gate on your right into the permissive footpath surrounding the allotments. Do not enter the allotment site. Follow this path round till you come to the farm track. Turn left and follow the track straight till you reach the B488 by the Silver Birch. Beware that this path can be muddy in parts in the winter.

1. Cross the B488 taking great care. This is the safest place to cross the road. Cross the field on the permissive footpath. Go through the hole in the hedge and turn left onto Footpath 7.
2. Continue on the footpath over a stile, across the field entrance and round to your right parallel with Stocks Road to climb the hill.
3. When you go through the gate at the top of the footpath keep walking up the hill past the Anglian Water inspection field to Pitstone Hill car park
4. Cross the road at this point and continue along the wide track beside the field until you come to the corner with a crossroads signpost.
5. Go right along the side of the field till you come to a post in the path.
6. Keep to the left hand path up the hill unless it is very muddy when it is possible to divert up the grass.
7. Keep going up till you come to a gate. Go through the gate and take the diagonal path up continuing in the same direction.
8. You will come out onto a potholed gravel track. Bear right and continue till you come to

# WALKS



the Kennels. Follow the made up track along the boundary. This is the beginning of the wide track which is easy walking to the monument still some distance away.

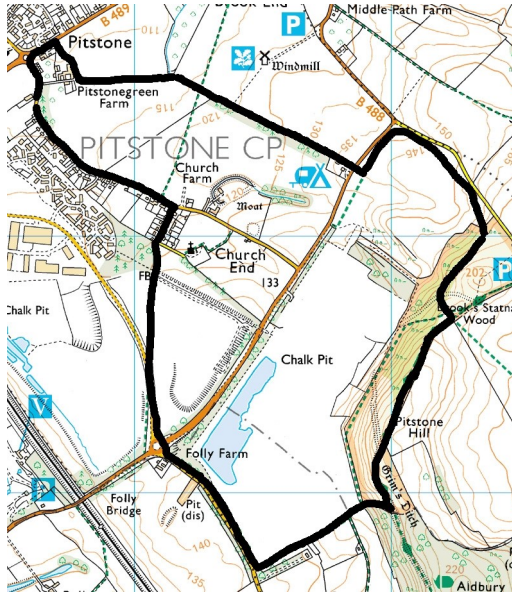
It is also possible to start this walk by going through Ivinghoe across the T junction of the B488 and 489 and through the gate up middle path about 200 yards further along. Re-join the walk at point 5.



# WALKS

## Pitstone Hill Walk

This walk is about 3.5 miles long. An easy stretch for a Sunday afternoon.



1. Starting from the Memorial Hall car park go across the recreation ground to the roundabout and turn right up Marsworth Road towards the village. After about 200 yards take the smaller gate on your right into the permissive footpath surrounding the allotments. Do not enter the allotment site.
2. Follow this path round till you come to a farm track. Turn left and follow the track straight up till you reach the road by the Silver Birch. Beware that this path can be muddy in parts in the winter.
3. Cross the road taking great care. This is the safest place to cross the road. Cross the narrow field on the permissive footpath. Go through the hole in the hedge and turn left onto Footpath
4. Continue on this footpath over a stile, across the field entrance and round to your right parallel with Stocks Road and continue up the hill.
5. When you reach the top of this path go through the gate and turn right. Follow the wide path till you reach the well trodden path coming down from the top of the hill (Picadilly). Turn right here and climb up to the highest point. On your way note the overgrown copse on your right. This is the AA wood planted in the 50's by members of the AA with neither permission or plan for maintenance. Also note a dug out pocket beside the

# WALKS

## Pitstone Hill Walk continued

path to your right. This is the Pitstone home guard gun emplacement from World War II.

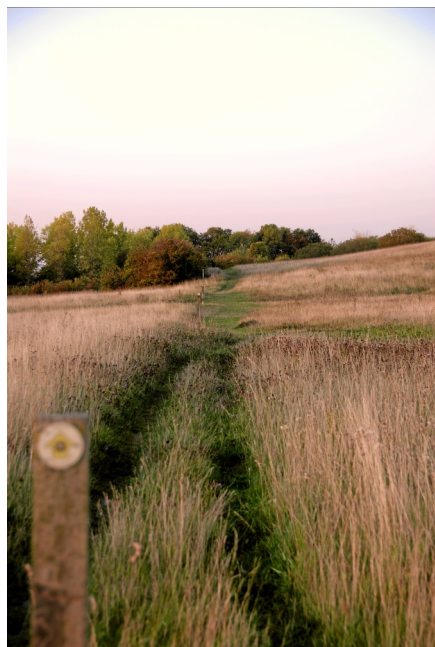
6. Admire the view from the highest point including All Saints, Leighton Buzzard to your right and County Council building in Aylesbury to your left.
7. When you reach a post with blue arrow bear right and follow the path downwards till you reach the gate into Aldbury Nowers. Do not go through the gate.



Above: Pitstone Hill  
from the quarry.

Right: Footpath across  
the quarry

Photos by Dave Nicholls



8. Turn down the hill which is quite steep at this point. Go straight on through the gate onto the footpath going down the side of the quarry. After you have been through the metal barrier at the bottom turn right to walk on a footpath parallel with the road.
9. At the end cross onto the road near the roundabout. Take care here and make your way across the roundabout and along Westfield Road.
10. Follow the Footpath sign across the quarry (above left) to Church Road. At the end of Church Road turn left and follow Vicarage Road back to the Memorial Hall.

# EASY CYCLE ROUTES

## Three nice and easy cycle routes to tempt you back into the saddle!

### Route 1—Lots of places to stop, not too taxing, no hills and not too far!

1. Start at the roundabout at the crossroads.
2. Head along Cheddington Road towards Cheddington and turn right after railway bridge.
3. Go through Cheddington to the double roundabout where you turn left and go along the Long Marston Road, past the airfield.
4. At the Queens Head turn left and go through Gubblecote, taking the left fork at the bend.
5. Continue along this road, past the old Deans egg depot and the old airfield entrance to the Red Lion Bridge at Marsworth.
6. Continue over the bridge and up to the road junction where you turn left by the village hall and head off up the hill to Pitstone.

### Route 2—lovely views from Pitstone Hill!

1. Cycle through Castlemead, using the cycle paths, up to the roundabout at Folly Farm.
2. Go straight over the roundabout, along Northfield Road until you get to the junction.
3. Turn Left and head towards Aldbury and then left again by the duck pond.
4. Cycle away from the village, past Stocks and head towards Pitstone Hill Car Park. We'd recommend you stop for a while at the hill to enjoy the view and have a well earned rest.
5. Continue down the hill towards Ivinghoe.
6. There is a nasty junction at the bottom, so take care when you turn right into Ivinghoe and then continue round into Pitstone.



# EASY CYCLE ROUTES

## Route 3—A slightly longer ride, but no hills!

1. Start at the roundabout at the crossroads.
2. Head along Cheddington Road towards Cheddington and turn right after railway bridge.
3. Go through Cheddington to the double roundabout where you turn left and go along the Long Marston Road, past the airfield.
4. At the Queens Head go straight across (into Astrope Lane), towards Puttenham.
5. Take the next left turn down Watery Lane.
6. At the end turn right, go over the canal bridge (Tea Ride Tip:- stick your hand in the air if you can as go up so cars coming towards you can see you!) and follow the road round into Wilstone village.
7. Go through Wilstone village and turn left at the end, opposite PE Mead Farm Shop - great for a cuppa & a piece of cake!
8. Very carefully, take the next right towards Little Tring - on the tight left hand bend.
9. Take the next left, Wiggles Lane and then right at the end, towards New Mill & Tring, going past Heygates to the Marmalade Cat Nursery roundabout.
10. Go straight over the roundabout and take the next left at the Pheasant pub, into Grove Road.
11. All the way to the end and left, where you can get on the cycle path, all the way to Tring station.
12. Go past the station then turn left up Northfield Road.
13. Go straight over the next roundabout along Westfield Road, towards Pitstone Green & Castlemead.
14. Turn right at the end and you will find yourself back at Pitstone Green roundabout.

These are just a few suggestions. However the Velos T-riders leave the Rose and Crown on a Saturday morning at about 10.00 am, going at the speed of the slowest rider and stopping for tea and cake on the way. Come and join us, we cycle as a group making sure that no one gets left behind and end up at the Rose & Crown for more refreshments at about 12.00 -12.30.

# VOLUNTEERING OPPORTUNITIES

Pitstone Parish Council is often made aware of local projects and community groups that would welcome your time and involvement. We also receive calls from residents that would like to volunteer but don't know what opportunities exist. So, we have set up a database of opportunities.

If you only have an hour or two a month, or have plenty of time on your hands, there is bound to be a role to suit you! If you are a community group that would like some extra support, please do get in touch and we will add your details to the database.

## Beacon Villages Community Library

Do you use the library? The library is looking for people to assist at the library to extend and enhance the opening times. Please call into the library to find out more details.

## Community Car Scheme

Some residents have great difficulty getting to their hospital or healthcare appointments, especially when they are in another local town. If you would be willing to drive someone there in your own car (petrol and car parking expenses will be paid) and wait with them, then volunteering to join the community car scheme could be right for you. For further information, please contact Stephen Davies on 01296 767116. email: [communitytransport@pitstone.co.uk](mailto:communitytransport@pitstone.co.uk)

## Memorial Hall Management Committee

Did you know that Pitstone Memorial Hall is run by a voluntary committee? It is also a registered charity. Without this team of dedicated people there would be nowhere for you to hold your parties or attend keep-fit sessions. The committee would love to hear from you! Please contact the secretary to the Hall Committee on [hallmanager@pitstone.co.uk](mailto:hallmanager@pitstone.co.uk)  
[www.pitstonememorialhall.co.uk](http://www.pitstonememorialhall.co.uk)

## Pitstone Church

The church is looking for volunteers to man the church from 2.30-5.30pm on Sunday afternoons and Bank Holidays from May to September. It is a very pleasant afternoon in lovely surroundings and support is provided. Please pop along to one of the open afternoons and speak to the volunteers on site.

The church committee would also love to hear from you if you could help organise and volunteer at the Annual Festival of Art and Flowers. This treasured tradition is in danger of coming to a close if more support cannot be found to help with the event in future years.

Please contact Jean Booth on [jean.g.booth@btinternet.com](mailto:jean.g.booth@btinternet.com).

# VOLUNTEERING OPPORTUNITIES

## Pitstone Green Museum

The village is very fortunate to have such a fascinating museum on its doorstep. The museum is housed in the farm buildings which date back to 1831 and provide a window on rural life with many interesting displays and artefacts. The museum is completely run by volunteers. It is open on every Bank Holiday Monday, plus the second Sundays in June, July, August and September. They would particularly love to hear from anyone with DIY or restoration skills; anyone that would be willing to help serve refreshments at the open days or anyone with a passion to preserve our history that would like to lend a hand setting up displays etc. The museum manager is waiting for your call on 07944 357715. [www.pitstonemuseum.co.uk](http://www.pitstonemuseum.co.uk)

## Pitstone Parish Post (PPP)

Hopefully everyone is very familiar with the quarterly village magazine published by Pitstone Parish Council and delivered to every home in the parish free-of-charge. PPP would not reach your door without the sterling efforts of a band of distributors, each of whom posts between 16 and 70 magazines four times per year. "Many hands make light work" as the saying goes, and we always welcome more distributors into the team. If you could deliver a few magazines down your road please contact Rachel Weber 07717 471584.

If you fancy yourself as a roving reporter, the next David Bailey or would like to turn your hand to a spot of editing, then the PPP Editor is always looking for extra hands to help write articles, prepare and write PPP. Email: [pppeditor@pitstone.co.uk](mailto:pppeditor@pitstone.co.uk)

## Pitstone Windmill

Are you interested in local history? Pitstone Windmill is one of the earliest surviving post mills in the UK and it has been looked after by the National Trust since 1937. They are looking for volunteers to sell admission tickets and welcome visitors to the windmill on Sundays and Bank Holidays from June to August, 2.30 - 6pm. If this is something you might be interested in we would love to hear from you. Please contact the Visitor Centre at [ashridge@nationaltrust.org.uk](mailto:ashridge@nationaltrust.org.uk) or 01442 851227.

## Youth Café

Would you be willing to help the 11-16 year olds at the Youth Café? Could you offer them guidance, serve refreshments, join in the Wii challenge, teach a skill or help with community related projects? Whatever your age or your skills, this may be the opportunity for you. As you will be in close contact with children, we will need to conduct a DBS check on all volunteers. If you would like to know more, please contact Mrs Laurie Eagling, Clerk to Pitstone Parish Council on 01296 767261 or [parishclerk@pitstone.co.uk](mailto:parishclerk@pitstone.co.uk)

# GENERAL INFORMATION

## Post Office and Post Boxes

Ivinghoe Post Office	Old Town Hall, High Street Ivinghoe, Leighton Buzzard LU7 9EP Includes car tax bill payments, banking and Euro office Monday to Saturday 07:30-20:30 Sunday 09:00-16:00	0345 722 3344
Post Boxes	Cheddington Road (near The Crescent) Marsworth Road (near Glebe Close) Vicarage Road (near Church Road) Windsor Road (near playground)	

## Shops

Masons	Marsworth Road, Pitstone Convenience store, Snacks, cigarettes, news & magazines, fruit & veg, frozen foods, off licence & lotto Weekdays: 06:30-20:00 Saturday: 07:00-20.00 Sunday: 08.00-17.00	01296 660052
Ivinghoe Village Shop	Old Town Hall, Ivinghoe Convenience store, fresh bread, hot tea/coffee, fruit & veg, off licence Monday to Saturday 07:30-20:30 Sunday 09:00-16:00	01296 660325
Grooms Farm Shop	Willowdene Farm, Station Road, Ivinghoe Fresh meat, poultry, eggs, vegetables and dairy products Open 9.00-12.00 Thursdays 8.30-05.00pm Fridays 8.00-1.00pm Saturdays	01296 666826 or 0788 2356241 Orders can be taken outside of opening hours

# GENERAL INFORMATION

## Library

Beacon Villages Community Library	Old Town Hall, High Street 2-5pm on Tuesday & Thursday 2-7pm on Friday and 10-1pm on Saturday Story time 2.15pm-2.45pm Tuesdays, term time only	0845 2303232
-----------------------------------	---	--------------

## Utilities

Gas	Emergency Number	0800 111 999
Anglian Water	General enquiries	0345 791 9155
	Water Leaks	03457 145 145

## Refuse and Recycling

Food waste (small green bin) is collected every Wednesday.

Recycling (blue lid bin) is collected every second Wednesday.

General waste (green lid bin) is collected every second Wednesday.

Garden refuse (brown bin), where you have subscribed to the service, is collected every second Wednesday.

All bins and baskets to be left at the edge of the property before 6am.

Contact Buckinghamshire council with any queries on 0300 1316000 or visit [www.buckinghamshire.gov.uk/bin-collection-recycling-and-waste/](http://www.buckinghamshire.gov.uk/bin-collection-recycling-and-waste/) to check the schedule or sign up to text alerts.

# GENERAL INFORMATION

## Advice (Citizens Advice Bureau)

Nearest CAB Office	Bossard House, West Street, Leighton Buzzard	01525 373878
--------------------	--	--------------

## Banks

NatWest	199 High St, Berkhamsted HP4 1AW	0845 600 2803
HSBC	181 High Street, Berkhamsted HP4 1AY	03457 404 404
Barclays	189 High St, Berkhamsted HP4 1AY	0345 734 5345
Lloyds	Market Sq., Leighton Buzzard LU7 1EU	0845 300 0000
Nationwide	35 High St., Leighton Buzzard LU7 1DN	0845 266 0641
Santander	1 Hockliffe St, Leighton Buzzard LU7 1HG	0845 765 4321

## Education

Pre School	Windmill Pre School, Brookmead School Site, High Street, Ivinghoe	01296 661031
Primary	Brookmead School, High Street, Ivinghoe	01296 668543
Secondary	Cottesloe, Wing	0845 755 5555
	Tring School, Tring	01442 822303
	Aylesbury Grammar for Boys	01296 484545
	Aylesbury High School for Girls	01296 388222
	Sir Henry Floyd Co-educational Grammar	01296 424781
Further Education	Aylesbury College	01296 588588
	West Herts College, Hemel Hempstead	01923 812000

Thames Valley Police	Non emergency contact number	101
Buckinghamshire Fire and Rescue	Non emergency contact number	01296 744400

# GENERAL INFORMATION

## Medical

Doctors	Little Rothschild Surgery, Marsworth Road	01296 662800
	Village Health Centre, Yardley Avenue	01525 223211
Chemists	Windmill Pharmacy, High Street, Ivinghoe	01296 706280
	Lloyds Pharmacy 66 High Street and 20 Chapel Street, Tring	01442 822258 01442 823101
	Rooney Chemists, 4 Dolphin Square, Tring	01442 822604
Dentists	Tring Dental Surgery, 6 Dolphin Square, Tring	01442 823081
	Bow Street Surgery 75 Western Road, Tring	01442 890384
	Edlesborough Dental Practice, 11 Cow Lane, Edlesborough	01525 233175
Hospitals	Stoke Mandeville, Aylesbury	01296 315000
	Luton & Dunstable	0845 127 0 127
	Hemel Hempstead General	01442 213141
Opticians	Specsavers, 8 Dolphin Square, Tring	01442 828778
	Brian Clark Opticians, 110 High Street, Tring	01442 823034
Chiropodist	Betafeet Podiatry, 110 High Street, Tring	01442 822990

## Cinemas and Theatres

Pitstone Film Club	Pitstone Memorial Hall, Vicarage Rd, Pitstone, Leighton Buzzard LU7 9EY <a href="http://www.facebook.com/PitstoneFilmClub">www.facebook.com/PitstoneFilmClub</a>	07999 153438
Cineworld Cinema	Leisure World, Jarman Park, Hemel Hempstead	0330 333444
Odeon Cinema	Exchange Street, Aylesbury HP20 1UR	0330 0144501
Rex Cinema	High Street (Three Close Lane), Berkhamsted, HP4 2FG	01442 877759
Waterside Theatre	Exchange Street, Aylesbury, HP20 1UG	0333 009 6690
Court Theatre	Station Road, Tring, HP23 5QY	07543 560478
Leighton Buzzard Theatre	Lake Street, Leighton Buzzard, LU7 1RX	0300 300 8125



# PITSTONE PARISH COUNCIL SERVICES AND KEY PROJECTS

## The Parish Council

The council's work falls into three main categories:

- \* Representing the local community
- \* Delivering services to meet local needs and
- \* Striving to improve the quality of life in the parish

We provide and maintain services such as: Allotments, Children's Play Areas, Youth Café, Pitstone pavilion and football pitches, Street lighting, Bus shelters, Seating, Litter and dog fouling collection and Grants to local community groups.

## Major Projects

The creation of the Castlemead estate released some funds to AVDC towards leisure provision. This has enabled Pitstone Parish Council to build the exciting Huck Teck play space on the recreation ground and in future will create a concrete skate park and a multi-use ball games court.



The redevelopment of Pitstone Pavilion was completed in December 2020, expanding the range of sports and leisure that can be played there as well as improving the current facilities for football, to bring the site up to the standard required by the leagues.

We now have a

community room (approximately 11 x 7.5m), kitchen, changing village, senior and junior football pitches and training area available for hire.

There is also a new Parish Council office to enable a wider range of services to be delivered to the community, located within the main building.

The parish council seeks improved infrastructure including commissioning a report from Ben Hamilton-Baillie which we are now working with Buckinghamshire Council on feasibility scoping.

Both Pitstone and Marsworth Parish Councils have been working for many years towards the installation of a footpath between the two villages, and thanks to a joint New Homes Bonus Grant, this has now come to fruition. We also work with Herts County Council towards delivering a cycle path to Tring station.



We seek to implement the wishes the community defined within the Pitstone Neighbourhood Development Plan, available on our web site.

# YOUR PARISH COUNCIL

## Chairman, Cllr Dave Nicholls



T: 01296 661910  
E: [dave.nicholls@pitstonepc.org](mailto:dave.nicholls@pitstonepc.org)  
**Chair** of Parish Council, **Chair** of Pitstone Parish Charity Committee, Staffing, Planning, Youth Café and Village Web Site.

## Vice Chairman, Cllr Bob Saintey



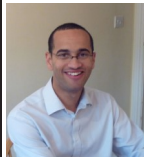
T: 01296 668633  
E: [bob.saintey@pitstonepc.org](mailto:bob.saintey@pitstonepc.org)  
**Chair** of Sports & Leisure, Staffing, PDA, Highways & Footpaths, Youth Café, AVALC, Local Area Forum, Pitstone Hill & Trees and Local Council Planning Liaison Group.

## Cllr Margaret Crutchfield



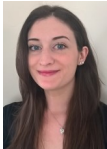
E: [margaret.crutchfield@pitstonepc.org](mailto:margaret.crutchfield@pitstonepc.org)  
**Chair** of Planning Committee, Allotment Officer, Sports & Leisure, Youth Café, Pitstone Memorial Hall Charity, Community Self Help Plan, Pitstone Parish Charity and Local Area Forum

## Cllr Ben Blunt



T: 01296 660702  
E: [ben.blunt@pitstonepc.org](mailto:ben.blunt@pitstonepc.org)  
**Chair** of Staffing Committee, Planning, PDA, Minerals & Waste and Local Area Forum

## Cllr Louise Stoddart



T: 07970 767097  
E: [louise.stoddart@pitstonepc.org](mailto:louise.stoddart@pitstonepc.org)  
Highways & paths, PPP articles

## Cllr Rob McCarthy



E: [rob.mccarthy@pitstonepc.org](mailto:rob.mccarthy@pitstonepc.org)  
Strategic planning, Tring station.

## Cllr Dr Dave Frearson



T: 07946 067808  
E: [dave.frearson@pitstonepc.org](mailto:dave.frearson@pitstonepc.org)  
Sports & Leisure, Street Lighting, Ecology/Chiltern Conservation Board, Community Transport and Local Area Forum.

## Cllr Kris Weber



T: 07710 088624  
E: [kris.weber@pitstonepc.org](mailto:kris.weber@pitstonepc.org)  
Sports & Leisure, PDA, Local Council Planning Liaison Group and Highways & Footpaths.

## Cllr Anil Mitra



T: 01296 295827  
E: [anil.mitra@pitstonepc.org](mailto:anil.mitra@pitstonepc.org)  
Highways & Paths, Youth Cafe

## Cllr Jack Hawkins



T: 07713 590490  
E: [jack.hawkins@pitstonepc.org](mailto:jack.hawkins@pitstonepc.org)  
Planning

## Correspondence/Enquiries, the Clerk:



**Laurie Eagling**  
9 Warwick Road, LU7 9FE  
T: 767261 Twitter: [@pitstone\\_pc](https://twitter.com/pitstone_pc)  
E: [parishclerk@pitstone.co.uk](mailto:parishclerk@pitstone.co.uk)  
Website: [www.pitstone.co.uk](http://www.pitstone.co.uk)  
Facebook: Pitstone Parish Council and Pitstone Youth

## Buckinghamshire Councillor: Sandra Jenkins

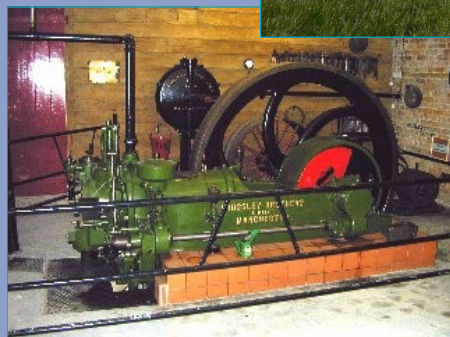


38 Mentmore Road, Cheddington, LU7 OSD  
T: 01296 668587  
E: [Sandra.jenkins@buckinghamshire.gov.uk](mailto:Sandra.jenkins@buckinghamshire.gov.uk)

## Buckinghamshire Councillor: Derek Town



4 The Slips, Cheddington, LU7 0RH  
T: 01296 661637  
E: [derek.town@buckinghamshire.gov.uk](mailto:derek.town@buckinghamshire.gov.uk)



The Pitstone Guide is published by Pitstone Parish Council, The Pavilion, Marsworth Road,  
Pitstone Leighton Buzzard LU7 9AP For further information  
please contact the Parish Clerk, email: [parishclerk@pitstone.co.uk](mailto:parishclerk@pitstone.co.uk)